



UNIFORM CRIME REPORTING PROGRAM

UCR STATISTICAL DATA VERIFICATION FORM

As an agency administrator or designee for the _____, I have
(Name of Agency)
reviewed the UCR monthly statistics for **May 2010** which includes all UCR data submitted
year to date. Based upon my or my designee's review and validation of same, I find that:

All data contained in the report for my agency is accurate and complete and may be
released and made part of UCR publications for future distribution to the public and other
interested UCR data subscribers.

Data contained in the report is inaccurate or incomplete and may not be published or
released at this time. (If this choice is selected, please provide the reason in the space
provided below.)

Reason: _____

The corrected data will be supplied to the UCR Program by: _____.
(Date)

This document must be signed and mailed to the Uniform Crime Reporting Program, 333 W.
Nye Lane Ste 100, Carson City, Nevada 89706 or faxed to (775) 684-6268 by **November 3,
2010**.

Signature of Agency Administrator (or designee)

Name/Title of Agency Administrator (print or type)

Agency's Name/Location

Date



Monthly Report



**May
2010**



Disclaimer: The following information is preliminary and cannot be certified until it is published in the annual report, *Crime in Nevada*, which will be available after July 1, 2011.



**Jearld Hafen, Director
Department of Public Safety**

**Pat Conmay, Division Chief
Records and Identification Bureau**

**Nicole Davis, Administrative Assistant IV
Sherri Sharp, Administrative Assistant II**

**Prepared by:
Records and Identification Bureau
Uniform Crime Reporting
333 W. Nye Lane Ste 100
Carson City, Nevada 89706
(775) 684-6262**



Nevada UCR Definitions / Explanations

Uniform Crime Reporting Program

The UCR program is a nationwide, cooperative, statistical effort by over 17,000 cities, county and state law enforcement agencies that voluntarily report data on crimes brought to their attention. Law enforcement agencies active in the national program represent 95% of the total population of the United States. While the program's primary objective is to generate a reliable set of crime statistics for use in law enforcement administration, operation and management, its data has over the years become one of the country's leading social indicators.

In Nevada, 39 agencies are currently reporting UCR data to the statewide program representing nearly 99% of its population. Rather than submitting directly to the FBI, local agencies must submit crime data to the state UCR Repository, which compiles, analyzes and submits copies of the reports to the FBI. The Nevada UCR Program prides itself on its responsiveness to local contributing agencies that previously received limited feedback for their efforts. The Nevada program is also responsible for producing and distributing periodic reports of the information contained in its database. As its database has grown, the program's utility has become even more apparent.

Eight offenses serve as an index for gauging fluctuations in overall volumes and rates of crime. Known collectively as the "Crime Index," these offenses include *the violent crimes of murder, rape, robbery and assault and the property crimes of burglary, larceny, motor vehicle theft and arson*. These offenses were selected as a grouped measuring device because they represent the most common crime problems. They are all serious crimes; either by their very nature or due to the volume and frequency with which they occur.

Index Crimes Definitions

Murder and Non-negligent Manslaughter

Murder and non negligent manslaughter, as defined in the Uniform Crime Reporting Program, is the willful (non-negligent) killing of a human being by another.

The classification of this offense, as for all other Crime Index offenses, is based solely on police investigation as opposed to the determination of a court, medical examiner, coroner, jury or other judicial entity. Not included in the count for this offense classification are deaths caused by negligence, suicide or accident, justifiable homicides and attempts to murder or assaults to murder. These are scored as aggravated assaults.

Nevada UCR Definitions / Explanations

Forcible Rape

Forcible rape, as defined in the program, is the carnal knowledge of a female forcibly and against her will. Assaults or attempts to commit rape by force or threat of force are also included; however, statutory rape (without force) and other sex offenses are excluded.

Robbery

Robbery is the taking or attempting to take anything of value from the care, custody or control of a person or persons by force or threat of force or violence and/or by putting the victim in fear.

Aggravated Assault

Aggravated assault is an unlawful attack by one person upon another for the purpose of inflicting severe or aggravated bodily injury. This type of assault is usually accompanied by the use of a weapon or by means likely to produce death or great bodily harm. Attempts are included since it is not necessary that an injury result when a gun, knife or other weapon is used which could and probably would result in serious personal injury if the crime were successfully completed

Burglary

The Uniform Crime Reporting Program defines burglary as the unlawful entry of a structure to commit a felony or theft. The use of force to gain entry is not required to classify an offense as burglary. Burglary in this program is categorized into three sub classifications: forcible entry, unlawful entry where no force is used and attempted forcible entry.

Larceny-Theft

Larceny-theft is the unlawful taking, carrying, leading, or riding away of property from the possession or constructive possession of another. It includes crimes such as shoplifting, pocket picking, purse-snatching, thefts from motor vehicles, thefts of motor vehicle parts and accessories, and bicycle thefts, etc., in which no use of force, violence, or fraud occurs. In the UCR Program, this crime category does not include embezzlement, "con" games, forgery, and worthless checks. Motor vehicle theft is also excluded from this category inasmuch as it is a separate Crime Index offense.

Motor Vehicle Theft

Defined as the theft or attempted theft of a motor vehicle, this offense category includes the stealing of automobiles, trucks, buses, motorcycles, motor scooters, snowmobiles, etc. The definition excludes the taking of a motor vehicle for temporary use by those persons having lawful access.

Nevada UCR

Definitions / Explanations

Arson

Arson is defined by the Uniform Crime Reporting Program as any willful or malicious burning or attempt to burn, with or without intent to defraud, a dwelling house, public building, a motor vehicle or aircraft, personal property of another, etc. Only fires determined through investigation to have been willfully or maliciously set are classified as arsons. Fires of suspicious or unknown origins are excluded.

Population Estimates

State, county and incorporated city population estimates are prepared and reviewed prior to the end of each calendar year for certification by the governor by March 1. The Nevada Department of Taxation and Nevada State Demographer, Bureau of Business and Economic Research, College of Business Administration, University of Nevada, Reno, prepares these estimates.

Crime Rates

Crime rates involve the number of Index Crimes per unit of population, usually per 100,000 persons. Because Nevada has such a low population, a rate per 1,000 persons is used to reflect a more realistic volume. No attempt is made to incorporate transient populations or other factors that contribute to the ratio and types of crime in given areas. Any effort to make comparisons of crime rates between areas should be tempered by these population and environmental variables.

Crime rates are one of the most meaningful statistical elements. Computation of crime rates per 1,000 population is achieved by dividing the community's population by 1,000, then dividing the number of offenses in each class by that number. The answer is the number of offenses per 1,000 population and is the crime rate for that particular offense. In Table 2, the County Total Crime Rate is computed after subtracting the population figure for all non-reporting agencies for the current month.

The index offense "Aggravated Assault" is an item of special interest to users of Nevada's UCR report. In Tables 1 & 3, where Nevada and National crime rates are compared, "simple assaults" are subtracted from the total of all assaults following FBI UCR rules, thus allowing for direct comparison. However, total assaults (simple and aggravated) are also presented in the Nevada report. This is because the Nevada UCR staff believes this figure is an important indicator of risk for citizens and it presents a more balanced picture of this portion of the crime index to law enforcement personnel.

The Federal Bureau of Investigation, Uniform Crime Reporting Section, publishes national rates.

Clearance Rates

The percentage of crimes cleared is obtained by dividing the number of offenses cleared by the number of offenses known. This number is then multiplied by 100.

Nevada--Statewide Summary--UCR

Index Crimes

May 2010

	# %			# %			% May			2009 NV	2008 NV	2008	
	Crimes	Cleared	Cleared	Crimes	Cleared	Cleared	May	Crimes	May	Cleared	Rate /	Rate /	Natl.
Offense	this	this	this	this	this	this	2009	2009	2009		1,000	1,000	Rate /
	Month	Month	Month	YTD	YTD	YTD				(Proj) *			1,000
Murder	13	10	77	66	60	91	18	19	106	0.06	0.09	0.05	
Rape	68	11	16	382	92	24	105	19	18	0.34	0.41	0.29	
Robbery	474	149	31	2,146	652	30	547	143	26	1.91	2.39	1.45	
Assault *	1,033	487	47	4,669	2,354	50	1,107	547	49	4.15	4.11	2.75	
Burglary	1,816	193	11	8,624	924	11	1,848	221	12	7.66	8.94	7.31	
Larceny	3,609	1,092	30	17,857	5,759	32	3,984	1,176	30	15.86	18.34	21.67	
MV Theft	797	62	8	3,849	313	8	1,043	77	7	3.42	5.88	3.15	
Arson	44	19	43	184	47	26	49	14	29	0.16	0.24	0.24	
Total	7,854	2,023	26	37,777	10,201	27	8,701	2,216	25	33.54	40.40	36.91	

* The projected Crime Rate for Assaults is computed after subtracting Simple Assaults from the total for all Assaults following FBI guidelines. Therefore, this rate may be compared directly to the National Rate. See Table 3 and the "Footnotes/Exceptions page for further information.

Nevada UCR - - Monthly Crime/ Clearance Summary - - All Crimes

Contributing Agency	Est. Pop	Murder		Rape		Robbery		Assault		Burglary		Larceny		MV Theft		Arson		Total Crimes	Crime Rate	Clearances	Clearance Rate
Carson County																		May 2010			
Carson SO	57,723	0	0	0	0	0	0	66	37	22	4	77	18	8	3	0	0	173	3.00	62	35.8%
County Total	57,723	0	0	0	0	0	0	66	37	22	4	77	18	8	3	0	0	173	3.00	62	35.8%
Churchill County																					
Churchill SO	18,738	0	0	0	0	0	0	8	11	5	3	7	4	4	0	0	1	24	1.28	19	79.2%
Fallon PD	8,452	0	0	0	0	0	0	23	17	3	0	29	8	0	0	0	0	55	6.51	25	45.5%
County Total	27,190	0	0	0	0	0	0	31	28	8	3	36	12	4	0	0	1	79	2.91	44	55.7%
Clark County																					
Boulder PD	15,863	0	0	0	0	0	0	8	8	4	1	5	0	0	0	1	1	18	1.13	10	55.6%
Clark Co. Schools PD*	313,600	0	0	0	0	3	2	52	39	18	5	83	19	0	0	3	2	159	0.51	67	42.1%
Henderson	260,161	0	0	4	1	29	15	233	167	94	24	264	91	39	2	5	2	668	2.57	302	45.2%
LV Metro PD	1,449,036	11	10	46	7	355	107	2,954	1,409	1,122	52	1,837	610	549	36	11	0	6,885	4.75	2,231	32.4%
LV Fire Dept*																4	0	4	N/A	0	0.0%
Mesquite	18,787	0	0	0	0	0	0	17	14	4	2	19	12	1	0	0	0	41	2.18	28	68.3%
North Las Vegas PD	210,472	1	0	6	0	33	13	305	198	155	14	273	50	72	5	1	0	846	4.02	280	33.1%
Taxicab Authority		0	0	0	0	0	0	5	5	0	0	34	10	0	0	0	0	39	0.00	15	38.5%
UNLV PD*	30,850	0	0	0	0	0	0	6	6	5	0	12	2	1	0	0	0	24	0.78	8	33.3%
County Total	1,954,319	12	10	56	8	420	137	3,580	1,846	1,402	98	2,527	794	662	43	25	5	8,684	4.44	2,941	33.9%
Douglas County																					
Douglas SO	52,386	0	0	2	1	0	1	43	25	19	4	48	8	2	0	1	1	115	2.20	40	34.8%
County Total	52,386	0	0	2	1	0	1	43	25	19	4	48	8	2	0	1	1	115	2.20	40	34.8%

*Population figure not included in county total
Table 2

Nevada UCR - - Monthly Crime/ Clearance Summary - - All Crimes

Contributing Agency	Est. Pop	Murder		Rape		Robbery		Assault		Burglary		Larceny		MV Theft		Arson		Total Crimes	Crime Rate	Clearances	Clearance Rate
Elko County		May 2010																			
Elko SO	23,004	0	0	0	0	0	0	4	4	4	1	2	2	0	0	0	0	10	0.43	7	70.0%
Carlin PD	2,281	0	0	0	0	0	0	2	1	1	0	4	2	0	0	0	0	7	3.07	3	42.9%
Elko PD	18,183	0	0	1	0	1	1	32	3	24	1	49	6	2	0	0	0	109	5.99	11	10.1%
WestWendover PD	4,871	0	0	0	0	0	0	9	2	4	1	4	0	1	0	0	0	18	3.70	3	16.7%
County Total	48,339	0	0	1	0	1	1	47	10	33	3	59	10	3	0	0	0	144	2.98	24	16.7%
Esmeralda County																					
Esmeralda SO	1,262	0	0	0	0	0	0	0	0	0	0	0	0	0	0	0	0	0	0.00	0	0.0%
County Total	1,262	0	0	0	0	0	0	0	0	0	0	0	0	0	0	0	0	0	0.00	0	0.0%
Eureka County																					
Eureka SO	1,460	0	0	0	0	0	0	2	1	0	0	2	0	0	0	0	0	4	2.74	1	25.0%
County Total	1,460	0	0	0	0	0	0	2	1	0	0	2	0	0	0	0	0	4	2.74	1	25.0%
Humboldt County																					
Humboldt SO	10,108	0	0	0	0	0	0	10	8	7	0	3	1	0	0	0	0	20	1.98	9	45.0%
Winnemucca PD	7,643	0	0	0	0	0	0	9	9	0	0	11	1	1	0	1	1	22	2.88	11	
County Total	17,751	0	0	0	0	0	0	19	17	7	0	14	2	1	0	1	1	42	2.37	20	47.6%

Nevada UCR - - Monthly Crime/ Clearance Summary - - All Crimes

Contributing Agency	Est. Pop	Murder		Rape		Robbery		Assault		Burglary		Larceny		MV Theft		Arson		Total Crimes	Crime Rate	Clearances	Clearance Rate
Lander County																		May 2010			
Lander SO	5,655	0	0	0	0	0	0	0	13	11	7	2	5	2	0	0	0	25	4.42	15	60.0%
County Total	5,655	0	0	0	0	0	0	0	13	11	7	2	5	2	0	0	0	25	4.42	15	60.0%
Lincoln County																					
Lincoln SO	3,987	0	0	0	0	0	0	0	4	0	0	0	4	1	0	0	0	8	2.01	1	12.5%
County Total	3,987	0	0	0	0	0	0	0	4	0	0	0	4	1	0	0	0	8	2.01	1	12.5%
Lyon County																					
Lyon SO	50,774	0	0	0	0	0	0	0	43	39	20	2	52	17	5	0	0	120	2.36	58	48.3%
Yerington PD	3,257	0	0	0	0	0	0	0	5	0	2	0	1	0	0	0	0	8	2.46	0	0.0%
County Total	54,031	0	0	0	0	0	0	0	48	39	22	2	53	17	5	0	0	128	2.37	58	45.3%
Mineral County																					
Mineral SO	4,399	0	0	0	0	0	0	0	4	4	3	1	2	1	0	0	0	9	2.05	6	66.7%
County Total	4,399	0	0	0	0	0	0	0	4	4	3	1	2	1	0	0	0	9	2.05	6	66.7%
Nye County																					
Nye SO	44,795	0	0	2	1	5	1	89	41	53	10	81	13	12	4	3	1	245	5.47	71	29.0%
County Total	44,795	0	0	2	1	5	1	89	41	53	10	81	13	12	4	3	1	245	5.47	71	29.0%

*Population figure not included in county total
Table 2

Nevada UCR - - Monthly Crime/ Clearance Summary - - All Crimes

Contributing Agency	Est. Pop	Murder		Rape		Robbery		Assault		Burglary		Larceny		MV Theft		Arson		Total Crimes	Crime Rate	Clearances	Clearance Rate
Pershing County		May 2010																			
Pershing SO	4,528	0	0	0	0	0	0	2	0	1	0	0	0	2	0	0	0	5	1.10	0	0.0%
Lovelock PD	2,427	0	0	0	0	0	0	3	1	2	3	5	5	0	0	0	0	10	4.12	9	90.0%
County Total	6,955	0	0	0	0	0	0	5	1	3	3	5	5	2	0	0	0	15	2.16	9	60.0%
Storey County																					
Storey	4,110	0	0	0	0	0	0	1	0	1	0	4	0	0	0	1	0	7	1.70	0	0.0%
County Total	4,110	0	0	0	0	0	0	1	0	1	0	4	0	0	0	1	0	7	1.70	0	0.0%
Washoe County																					
Washoe SO	106,868	0	0	3	0	1	0	71	46	25	5	65	5	10	2	0	0	175	1.64	58	33.1%
Reno PD	214,371	1	0	1	0	34	7	275	157	142	35	463	134	56	5	3	1	975	4.55	339	34.8%
Sparks PD	87,846	0	0	3	1	13	2	113	76	66	23	126	60	31	4	9	8	361	4.11	174	48.2%
UNR PD*	16,671	0	0	0	0	0	0	1	1	2	0	11	0	0	0	0	0	14	0.84	1	7.1%
Washoe Co Schl PD*	68,366	0	0	0	0	0	0	1	1	0	0	15	8	1	1	1	1	18	0.26	11	61.1%
TMCC PD*	15,260	0	0	0	0	0	0	0	0	0	0	1	0	0	0	0	0	1	0.07	0	0.0%
County Total	409,085	1	0	7	1	48	9	461	281	235	63	681	207	98	12	13	10	1,544	3.77	583	37.8%
White Pine County																					
White Pine SO	9,542	0	0	0	0	0	0	10	8	1	0	11	2	0	0	0	0	22	2.31	10	45.5%
County Total	9,542	0	0	0	0	0	0	10	8	1	0	11	2	0	0	0	0	22	2.31	10	45.5%
Grand Total	2,702,989	13	10	68	11	474	149	4,423	2,349	1,816	193	3,609	1,092	797	62	44	19	11,244	4.16	3,885	34.6%

*Population figure not included in county total
Table 2

Nevada UCR - - Monthly Crimes/Clearances Summary - - Index Crimes
May 2010

Est. Pop		Murder		Rape		Robbery		*Assault		Burglary		Larceny		MV Theft		Arson		Total Crimes	Crime Rate	Total Clear	Clearance Rate
Statewide Totals																					
(Crimes/Clearances)	2,702,989	13	10	68	11	474	149	1033	487	1816	193	3609	1092	797	62	44	19	7854	2.91	2023	25.76

Nevada (Projected 2010) vs National (2008) Index Crime Rates

(per 1,000 population)

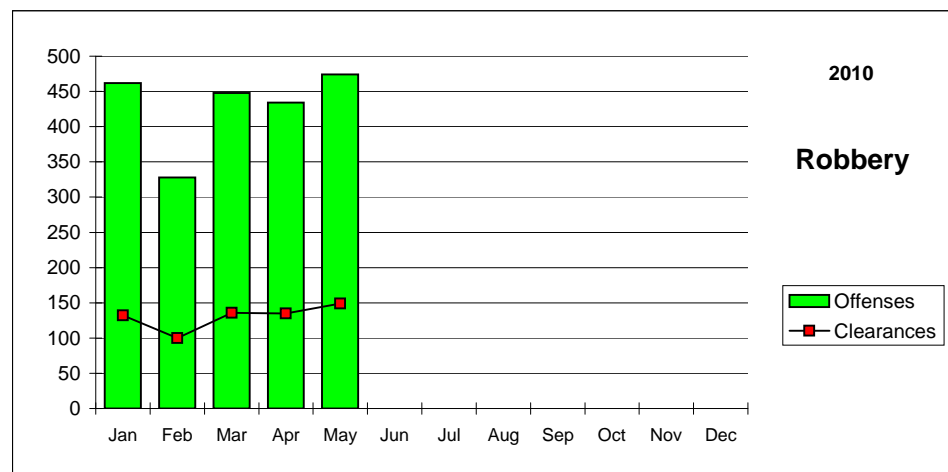
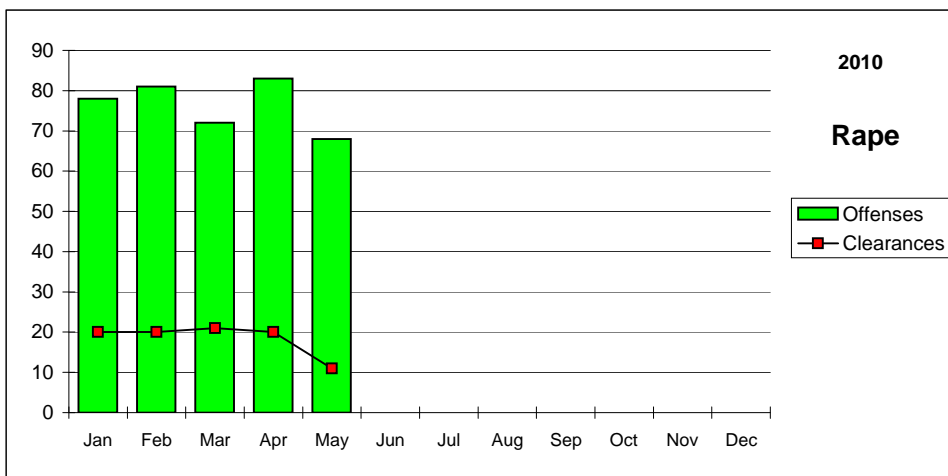
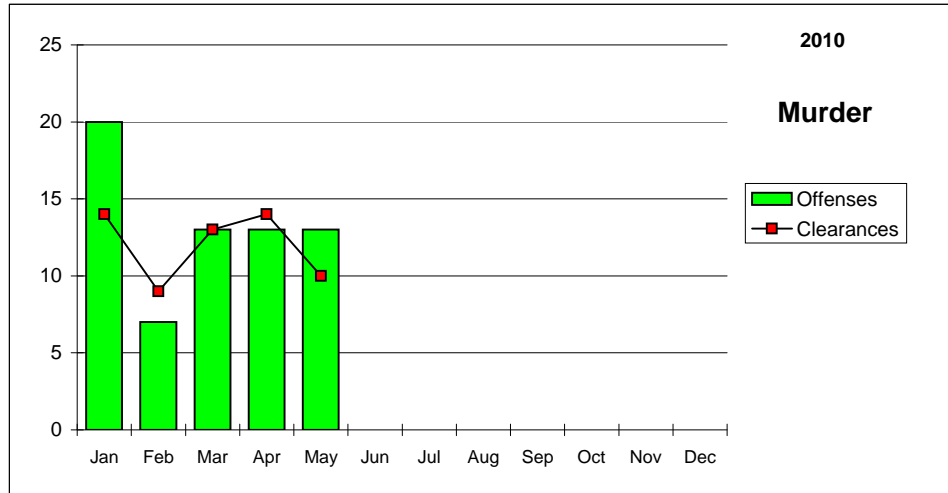
	Murder	Rape	Robbery	Assault	Burglary	Larceny	MV Theft	**Arson	Crime Rate
Nevada	0.06	0.34	1.91	4.15	7.66	15.86	3.42	0.16	33.54
National	0.05	0.29	1.45	2.75	7.31	21.67	3.15	0.24	36.91

Nevada (Projected 2010) vs National (2008) Crime Clearance Rates

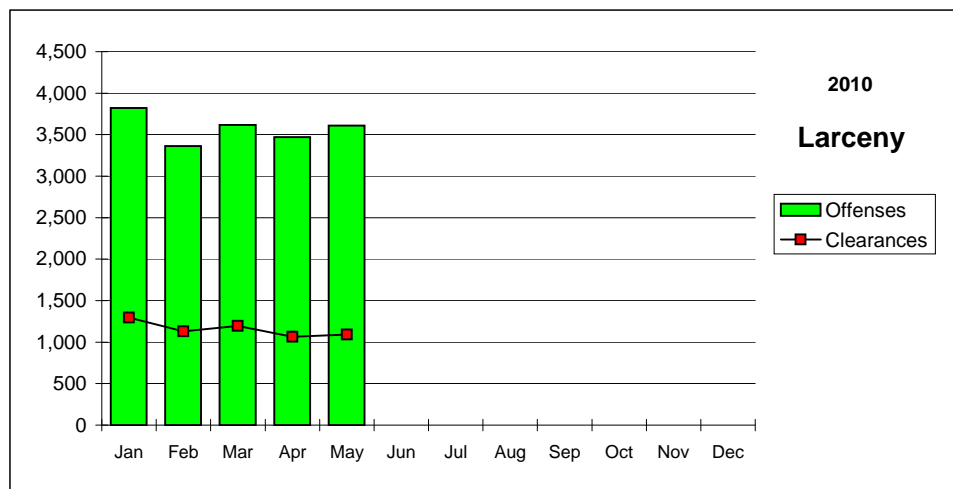
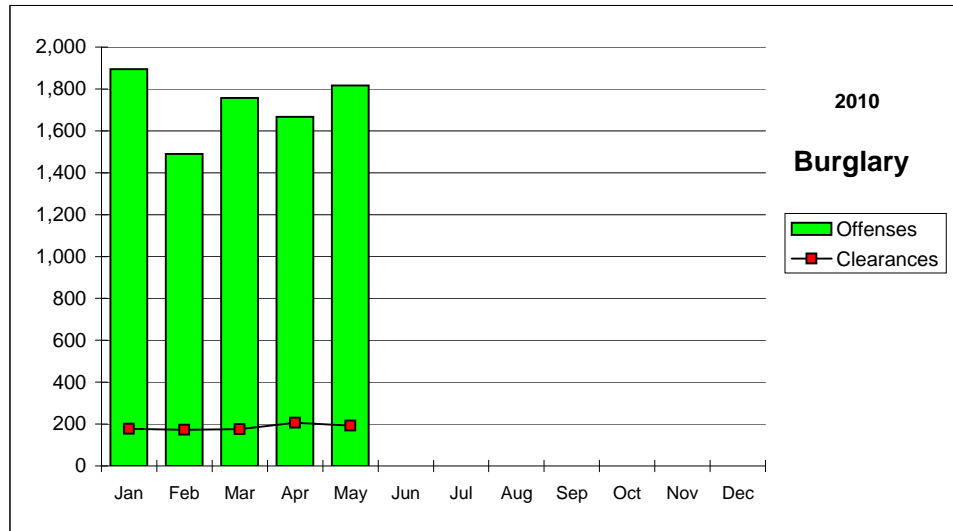
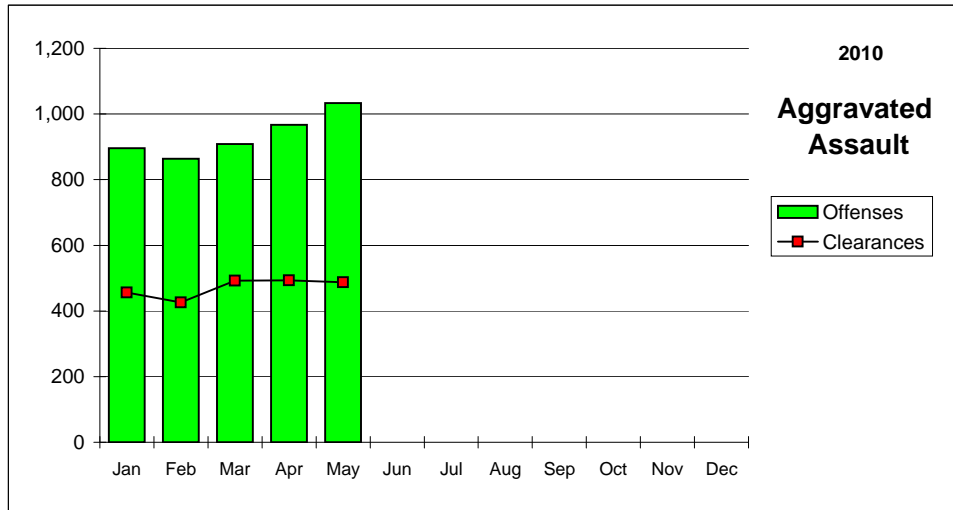
(by Percent)

	Murder	Rape	Robbery	Assault	Burglary	Larceny	MV Theft	Arson	Clear Rate
Nevada	90.9	24.1	30.4	50.4	10.7	32.3	8.1	25.5	25.8
National	63.6	40.4	26.8	54.9	12.5	19.9	12.0	17.8	31.0

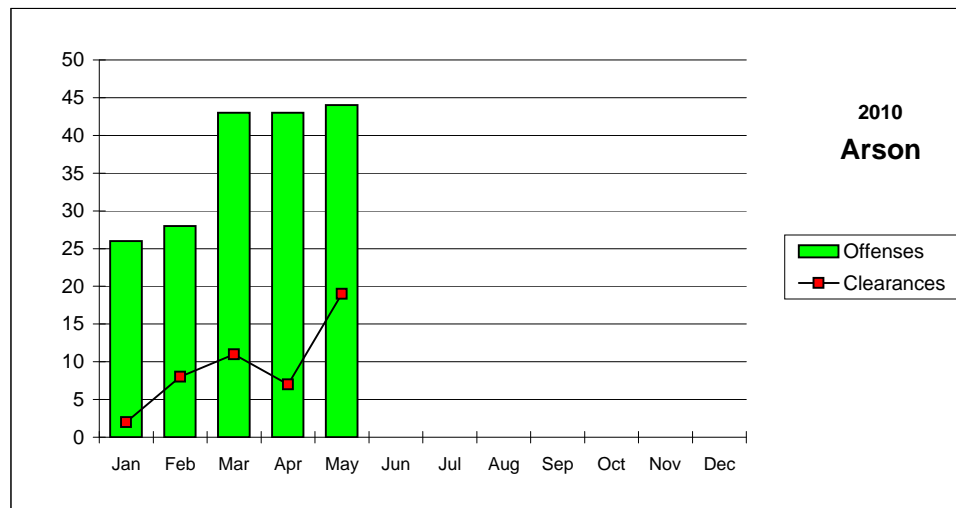
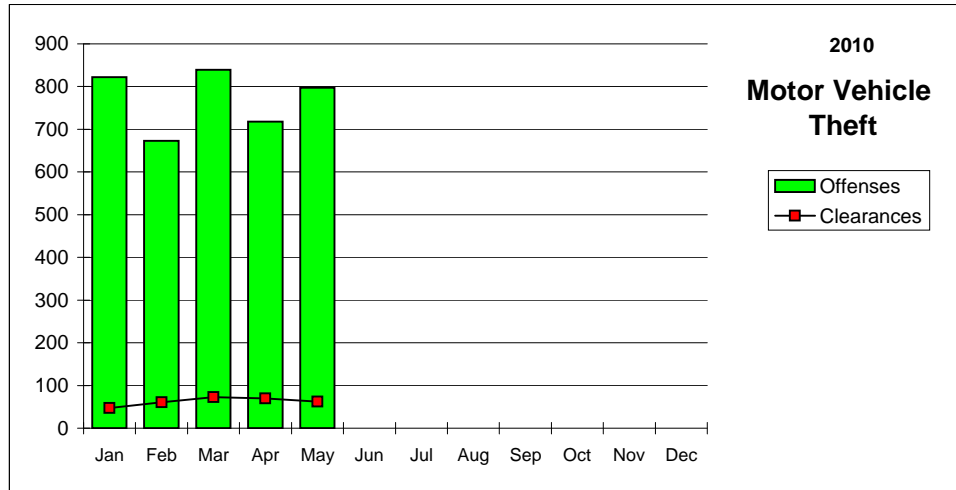
Nevada--Graphic Summary--UCR



Nevada--Graphic Summary--UCR



Nevada--Graphic Summary--UCR



Nevada--Murder--Incidence Level Variation--UCR

May 2010

Agency	May 2010 Offenses	May 2010 Cleared	2010 YTD Offenses	2010 YTD Cleared	May 2009 Offenses	May 2009 Cleared	2009 YTD Offenses	2009 YTD Cleared
Boulder	0	0	0	0	0	0	1	0
Carlin PD	0	0	0	0	0	0	0	0
Carson SO	0	0	0	0	0	0	0	0
Churchill SO	0	0	0	0	0	0	0	0
Clark Co Schl PD	0	0	0	0	0	0	0	0
Douglas SO	0	0	0	0	0	0	0	0
Elko PD	0	0	0	0	0	0	0	0
Elko SO	0	0	0	0	0	0	0	0
Esmeralda SO	0	0	0	0	0	0	0	0
Eureka SO	0	0	0	0	0	0	0	0
Fallon PD	0	0	0	0	0	0	0	0
Henderson PD	0	0	1	2	0	0	1	2
Humboldt SO	0	0	0	0	0	0	0	0
Lander SO	0	0	0	0	0	0	0	0
Lincoln SO	0	0	0	0	0	0	0	1
Lovelock PD	0	0	0	0	0	0	0	0
LV Fire Dept	0	0	0	0	0	0	0	0
LV Metro	11	10	51	46	13	15	50	42
Lyon SO	0	0	0	0	0	0	0	0
Mesquite PD	0	0	0	0	0	0	0	0
Mineral SO	0	0	0	0	0	0	0	0
NLVPD	1	0	8	6	1	1	10	5
Nye SO	0	0	1	1	0	0	1	1
Pershing SO	0	0	0	0	0	0	0	0
Reno PD	1	0	4	3	1	0	3	3
Sparks PD	0	0	1	2	0	0	0	0
Storey SO	0	0	0	0	0	0	0	0
Taxicab Authority	0	0	0	0	0	0	0	0
TMCC PD	0	0	0	0	0	0	0	0
UNLV PD	0	0	0	0	0	0	0	0
UNR PD	0	0	0	0	0	0	0	0
Washoe SO	0	0	0	0	3	3	3	3
Washoe Co Schl PD	0	0	0	0	0	0	0	0
Wendover PD	0	0	0	0	0	0	0	0
White Pine SO	0	0	0	0	0	0	0	0
Winnemucca PD	0	0	0	0	0	0	0	0
Yerington PD	0	0	0	0	0	0	0	0
TOTALS	13	10	66	60	18	19	69	57

Nevada--Rape--Incidence Level Variation--UCR

May 2010

Agency	May 2010 Offenses	May 2010 Cleared	2010 YTD Offenses	2010 YTD Cleared	May 2009 Offenses	May 2009 Cleared	2009 YTD Offenses	2009 YTD Cleared
Boulder	0	0	1	0	0	0	0	0
Carlin PD	0	0	0	0	0	0	0	0
Carson SO	0	0	1	0	0	0	1	0
Churchill SO	0	0	3	4	1	0	3	2
Clark Co Schl PD	0	0	1	0	0	0	3	0
Douglas SO	2	1	2	2	1	0	3	0
Elko PD	1	0	8	2	0	0	9	0
Elko SO	0	0	0	0	2	0	2	0
Esmeralda SO	0	0	0	0	0	0	0	0
Eureka SO	0	0	0	0	0	0	1	1
Fallon PD	0	0	0	0	0	0	1	0
Henderson PD	4	1	11	7	10	2	27	15
Humboldt SO	0	0	0	0	0	0	0	0
Lander SO	0	0	2	2	1	0	3	0
Lincoln SO	0	0	0	0	0	0	0	0
Lovelock PD	0	0	0	0	0	0	0	0
LV Fire Dept	0	0	0	0	0	0	0	0
LV Metro	46	7	260	45	64	12	313	61
Lyon SO	0	0	2	2	0	0	0	0
Mesquite PD	0	0	0	0	0	0	0	1
Mineral SO	0	0	0	0	0	0	0	0
NLVPD	6	0	23	7	8	0	19	5
Nye SO	2	1	8	2	3	3	6	6
Pershing SO	0	0	1	0	0	0	2	0
Reno PD	1	0	23	6	11	2	37	6
Sparks PD	3	1	21	13	2	0	18	10
Storey SO	0	0	0	0	0	0	0	0
Taxicab Authority	0	0	0	0	0	0	0	0
TMCC PD	0	0	0	0	0	0	0	0
UNLV PD	0	0	0	0	0	0	1	0
UNR PD	0	0	0	0	0	0	0	0
Washoe SO	3	0	12	0	0	0	0	0
Washoe Co Schl PD	0	0	0	0	0	0	0	0
Wendover PD	0	0	1	0	2	0	6	0
White Pine SO	0	0	2	0	0	0	1	1
Winnemucca PD	0	0	0	0	0	0	1	0
Yerington PD	0	0	0	0	0	0	0	0
TOTALS	68	11	382	92	105	19	457	108

Nevada--Robbery--Incidence Level Variation--UCR

May 2010

Agency	May 2010 Offenses	May 2010 Cleared	2010 YTD Offenses	2010 YTD Cleared	May 2009 Offenses	May 2009 Cleared	2009 YTD Offenses	2009 YTD Cleared
Boulder	0	0	0	0	0	0	0	0
Carlin PD	0	0	0	0	0	0	0	0
Carson SO	0	0	8	6	1	1	12	10
Churchill SO	0	0	0	0	0	0	0	0
Clark Co Schl PD	3	2	22	12	4	4	25	14
Douglas SO	0	1	2	1	1	0	5	3
Elko PD	1	1	7	5	3	0	4	1
Elko SO	0	0	0	0	0	0	0	0
Esmeralda SO	0	0	0	0	0	0	0	0
Eureka SO	0	0	0	0	0	0	0	0
Fallon PD	0	0	1	0	0	0	1	0
Henderson PD	29	15	98	55	18	9	129	41
Humboldt SO	0	0	0	0	1	1	1	1
Lander SO	0	0	0	0	0	0	0	0
Lincoln SO	0	0	0	0	0	0	0	0
Lovelock PD	0	0	0	0	0	0	0	0
LV Fire Dept	0	0	0	0	0	0	0	0
LV Metro	355	107	1,608	445	417	96	1,976	480
Lyon SO	0	0	2	0	1	1	4	2
Mesquite PD	0	0	2	1	1	1	3	2
Mineral SO	0	0	0	0	0	0	0	0
NLVPD	33	13	166	52	59	15	268	78
Nye SO	5	1	8	2	3	2	9	7
Pershing SO	0	0	0	0	0	0	0	0
Reno PD	34	7	168	53	30	7	172	50
Sparks PD	13	2	39	16	7	5	57	18
Storey SO	0	0	0	0	0	0	0	0
Taxicab Authority	0	0	0	0	0	0	0	0
TMCC PD	0	0	0	0	0	0	0	0
UNLV PD	0	0	2	0	0	0	1	0
UNR PD	0	0	0	0	0	0	0	0
Washoe SO	1	0	10	3	1	1	6	2
Washoe Co Schl PD	0	0	0	0	0	0	0	0
Wendover PD	0	0	1	0	0	0	0	0
White Pine SO	0	0	1	1	0	0	0	0
Winnemucca PD	0	0	1	0	0	0	0	0
Yerington PD	0	0	0	0	0	0	0	0
TOTALS	474	149	2,146	652	547	143	2,673	709

Nevada--Aggravated Assault--Incidence Level Variation--UCR

May 2010

Agency	May 2010 Offenses	May 2010 Cleared	2010 YTD Offenses	2010 YTD Cleared	May 2009 Offenses	May 2009 Cleared	2009 YTD Offenses	2009 YTD Cleared
Boulder	0	0	7	7	1	0	3	0
Carlin PD	0	0	0	0	1	1	7	7
Carson SO	13	16	68	59	10	6	71	40
Churchill SO	2	2	14	10	5	1	11	4
Clark Co Schl PD	5	4	18	14	5	3	16	10
Douglas SO	4	2	25	16	1	0	14	10
Elko PD	3	0	15	12	0	0	18	11
Elko SO	1	1	4	4	3	2	4	2
Esmeralda SO	0	0	0	0	0	0	1	0
Eureka SO	1	0	2	0	2	2	4	4
Fallon PD	2	1	12	10	8	4	11	6
Henderson PD	22	18	125	98	21	17	102	55
Humboldt SO	8	6	21	16	6	5	20	17
Lander SO	3	3	13	11	0	0	10	7
Lincoln SO	1	0	4	2	0	0	0	0
Lovelock PD	1	0	3	2	1	0	2	2
LV Fire Dept	0	0	0	0	0	0	0	0
LV Metro	716	285	3,257	1,438	765	355	3,051	1,430
Lyon SO	7	5	43	39	5	5	35	34
Mesquite PD	3	3	4	4	0	0	3	1
Mineral SO	4	4	14	14	5	5	9	9
NLVPD	83	49	419	259	109	65	407	223
Nye SO	39	20	118	50	5	5	31	27
Pershing SO	1	0	4	2	1	0	5	2
Reno PD	62	33	261	142	100	44	386	180
Sparks PD	20	15	84	54	30	13	95	53
Storey SO	0	0	2	1	0	0	1	0
Taxicab Authority	0	0	2	2	0	0	1	1
TMCC PD	0	0	0	0	0	0	1	1
UNLV PD	1	1	3	2	0	0	2	1
UNR PD	1	1	8	8	0	0	0	0
Washoe SO	25	16	82	62	14	9	106	74
Washoe Co Schl PD	0	0	2	2	0	0	2	2
Wendover PD	1	0	4	2	3	0	10	2
White Pine SO	3	2	11	5	3	3	5	5
Winnemucca PD	0	0	7	7	2	2	12	6
Yerington PD	1	0	13	0	1	0	3	0
TOTALS	1,033	487	4,669	2,354	1,107	547	4,459	2,226

Nevada--All Assaults--Incidence Level Variation--UCR

May 2010

Agency	May 2010 Offenses	May 2010 Cleared	2010 YTD Offenses	2010 YTD Cleared	May 2009 Offenses	May 2009 Cleared	2009 YTD Offenses	2009 YTD Cleared
Boulder	8	8	54	48	8	4	24	12
Carlin PD	2	1	9	8	4	4	21	19
Carson SO	66	37	308	195	72	33	312	174
Churchill SO	8	11	67	62	15	10	58	57
Clark Co Schl PD	52	39	389	258	82	50	430	253
Douglas SO	43	25	253	171	37	27	203	167
Elko PD	32	3	143	82	33	10	164	93
Elko SO	4	4	15	14	3	2	9	4
Esmeralda SO	0	0	1	1	0	0	2	1
Eureka SO	2	1	3	1	3	2	5	4
Fallon PD	23	17	134	105	43	27	110	81
Henderson PD	233	167	1,132	994	256	152	1,098	723
Humboldt SO	10	8	25	19	6	5	22	19
Lander SO	13	11	72	62	7	7	43	37
Lincoln SO	4	0	23	13	4	4	12	7
Lovelock PD	3	1	13	11	5	4	26	20
LV Fire Dept	0	0	0	0	0	0	0	0
LV Metro	2,954	1,409	13,166	6,145	2,940	1,391	12,270	5,714
Lyon SO	43	39	221	210	46	43	227	220
Mesquite PD	17	14	76	65	18	16	74	65
Mineral SO	4	4	19	19	5	5	19	19
NLVPD	305	198	1,343	847	324	203	1,430	912
Nye SO	89	41	324	173	76	75	282	274
Pershing SO	2	0	7	3	1	0	7	3
Reno PD	275	157	1,385	776	428	233	1,817	933
Sparks PD	113	76	548	342	165	84	633	364
Storey SO	1	0	12	7	4	4	18	11
Taxicab Authority	5	5	17	17	7	2	32	22
TMCC PD	0	0	1	1	0	0	1	1
UNLV PD	6	6	22	16	0	0	16	11
UNR PD	1	1	9	9	0	0	0	0
Washoe SO	71	46	302	233	66	48	311	229
Washoe Co Schl PD	1	1	22	21	0	0	13	13
Wendover PD	9	2	54	26	11	7	66	24
White Pine SO	10	8	31	18	10	8	19	17
Winnemucca PD	9	9	42	42	10	9	60	52
Yerington PD	5	0	23	0	3	0	19	0
TOTALS	4,423	2,349	20,265	11,014	4,692	2,469	19,853	10,555

Nevada--Burglary--Incidence Level Variation--UCR

May 2010

Agency	May 2010 Offenses	May 2010 Cleared	2010 YTD Offenses	2010 YTD Cleared	May 2009 Offenses	May 2009 Cleared	2009 YTD Offenses	2009 YTD Cleared
Boulder	4	1	17	1	4	0	28	2
Carlin PD	1	0	8	3	1	1	8	7
Carson SO	22	4	103	21	24	6	112	24
Churchill SO	5	3	21	6	7	1	18	8
Clark Co Schl PD	18	5	84	25	22	6	92	26
Douglas SO	19	4	69	14	20	2	84	12
Elko PD	24	1	117	8	16	3	64	7
Elko SO	4	1	14	7	12	1	33	6
Esmeralda SO	0	0	1	0	0	0	0	0
Eureka SO	0	0	0	0	1	0	3	1
Fallon PD	3	0	12	3	3	0	19	5
Henderson PD	94	24	505	105	126	27	576	137
Humboldt SO	7	0	10	0	3	1	9	3
Lander SO	7	2	26	12	4	4	37	12
Lincoln SO	0	0	1	2	0	1	3	1
Lovelock PD	2	3	9	12	2	1	7	6
LV Fire Dept	0	0	0	0	0	0	0	0
LV Metro	1,122	52	5,365	310	1,090	84	5,478	381
Lyon SO	20	2	75	10	16	3	71	9
Mesquite PD	4	2	18	3	2	0	23	5
Mineral SO	3	1	7	4	1	1	6	2
NLVPD	155	14	719	55	187	12	823	83
Nye SO	53	10	189	25	16	4	103	23
Pershing SO	1	0	5	2	0	0	2	1
Reno PD	142	35	677	109	163	31	735	141
Sparks PD	66	23	335	141	66	25	373	129
Storey SO	1	0	5	0	2	0	7	1
Taxicab Authority	0	0	2	1	1	1	1	1
TMCC PD	0	0	0	0	0	0	3	1
UNLV PD	5	0	13	0	4	0	18	0
UNR PD	2	0	9	1	0	0	0	0
Washoe SO	25	5	150	29	36	3	183	25
Washoe Co Schl PD	0	0	3	3	0	0	2	0
Wendover PD	4	1	15	4	5	1	28	4
White Pine SO	1	0	15	1	1	0	10	0
Winnemucca PD	0	0	11	7	5	2	35	13
Yerington PD	2	0	14	0	8	0	21	0
TOTALS	1,816	193	8,624	924	1,848	221	9,015	1,076

Nevada--Larceny--Incidence Level Variation--UCR

May 2010

Agency	May 2010 Offenses	May 2010 Cleared	2010 YTD Offenses	2010 YTD Cleared	May 2009 Offenses	May 2009 Cleared	2009 YTD Offenses	2009 YTD Cleared
Boulder	5	0	20	4	8	0	32	4
Carlin PD	4	2	11	4	0	0	4	4
Carson SO	77	18	286	97	61	20	324	138
Churchill SO	7	4	23	15	9	1	44	20
Clark Co Schl PD	83	19	395	87	101	26	423	89
Douglas SO	48	8	255	33	50	11	227	50
Elko PD	49	6	215	29	40	8	154	26
Elko SO	2	2	9	9	13	3	33	11
Esmeralda SO	0	0	0	0	0	0	2	2
Eureka SO	2	0	5	1	3	0	4	0
Fallon PD	29	8	100	31	19	6	116	39
Henderson PD	264	91	1,476	552	281	96	1,299	376
Humboldt SO	3	1	9	2	1	0	9	2
Lander SO	5	2	19	11	8	5	29	11
Lincoln SO	4	1	14	5	5	0	12	0
Lovelock PD	5	5	15	10	2	1	7	6
LV Fire Dept	0	0	0	0	0	0	0	0
LV Metro	1,837	610	9,297	3,284	2,141	659	10,878	3,339
Lyon SO	52	17	209	90	38	19	164	70
Mesquite PD	19	12	76	36	11	5	76	27
Mineral SO	2	1	6	4	0	0	3	1
NLVPD	273	50	1,301	351	311	60	1,469	352
Nye SO	81	13	295	56	51	19	220	81
Pershing SO	0	0	7	2	1	0	5	1
Reno PD	463	134	2,307	623	506	136	2,501	630
Sparks PD	126	60	805	289	160	67	811	254
Storey SO	4	0	10	0	1	0	13	0
Taxicab Authority	34	10	119	27	41	17	198	98
TMCC PD	1	0	13	0	0	0	6	0
UNLV PD	12	2	87	7	8	0	72	5
UNR PD	11	0	54	5	0	0	0	0
Washoe SO	65	5	240	46	71	7	351	48
Washoe Co Schl PD	15	8	78	34	15	6	69	25
Wendover PD	4	0	26	2	8	1	36	5
White Pine SO	11	2	35	4	11	2	27	5
Winnemucca PD	11	1	39	9	5	1	35	15
Yerington PD	1	0	1	0	4	0	7	0
TOTALS	3,609	1,092	17,857	5,759	3,984	1,176	19,660	5,734

Nevada--MV Theft--Incidence Level Variation--UCR

May 2010

Agency	May 2010 Offenses	May 2010 Cleared	2010 YTD Offenses	2010 YTD Cleared	May 2009 Offenses	May 2009 Cleared	2009 YTD Offenses	2009 YTD Cleared
Boulder	0	0	11	0	2	0	4	0
Carlin PD	0	0	0	0	1	1	4	4
Carson SO	8	3	45	15	8	4	35	14
Churchill SO	4	0	14	1	3	2	8	2
Clark Co Schl PD	0	0	9	1	1	1	24	2
Douglas SO	2	0	17	4	3	0	14	3
Elko PD	2	0	16	1	2	0	18	1
Elko SO	0	0	2	1	2	1	10	5
Esmeralda SO	0	0	0	0	0	0	0	0
Eureka SO	0	0	0	0	0	0	0	0
Fallon PD	0	0	1	0	0	0	3	0
Henderson PD	39	2	191	10	58	4	310	12
Humboldt SO	0	0	0	0	1	0	2	1
Lander SO	0	0	1	1	0	0	5	3
Lincoln SO	0	0	0	0	-1	1	5	2
Lovelock PD	0	0	1	0	0	0	1	1
LV Fire Dept	0	0	0	0	0	0	0	0
LV Metro	549	36	2655	189	768	45	3984	210
Lyon SO	5	0	30	8	6	3	24	7
Mesquite PD	1	0	5	0	1	1	8	2
Mineral SO	0	0	0	0	0	0	3	0
NLVPD	72	5	365	18	85	5	507	30
Nye SO	12	4	48	10	9	1	41	2
Pershing SO	2	0	2	0	0	0	0	0
Reno PD	56	5	274	30	63	6	341	34
Sparks PD	31	4	110	15	16	2	131	25
Storey SO	0	0	2	1	0	0	1	0
Taxicab Authority	0	0	0	0	0	0	0	0
TMCC PD	0	0	0	0	0	0	0	0
UNLV PD	1	0	6	0	0	0	13	1
UNR PD	0	0	2	0	0	0	0	0
Washoe SO	10	2	33	6	12	0	62	8
Washoe Co Schl PD	1	1	2	1	0	0	2	1
Wendover PD	1	0	1	0	1	0	3	0
White Pine SO	0	0	2	1	0	0	3	0
Winnemucca PD	1	0	4	0	2	0	11	0
Yerington PD	0	0	0	0	0	0	0	0
TOTALS	797	62	3849	313	1043	77	5577	370

Nevada--Arson--Incidence Level Variation--UCR

May 2010

Agency	May 2010 Offenses	May 2010 Cleared	2010 YTD Offenses	2010 YTD Cleared	May 2009 Offenses	May 2009 Cleared	2009 YTD Offenses	2009 YTD Cleared
Boulder	1	1	1	1	0	0	2	1
Carlin PD	0	0	1	1	0	0	0	0
Carson SO	0	0	2	0	0	1	5	1
Churchill SO	0	1	0	1	0	0	0	0
Clark Co Schl PD	3	2	21	7	3	1	19	11
Douglas SO	1	1	4	1	1	1	2	1
Elko PD	0	0	3	0	1	0	1	0
Elko SO	0	0	0	0	0	0	1	0
Esmeralda SO	0	0	0	0	0	0	0	0
Eureka SO	0	0	0	0	0	0	0	0
Fallon PD	0	0	0	0	0	0	0	0
Henderson PD	5	2	21	4	2	2	42	6
Humboldt SO	0	0	0	0	0	0	1	0
Lander SO	0	0	0	0	0	0	0	0
Lincoln SO	0	0	0	0	8	4	8	4
Lovelock PD	0	0	0	0	0	0	0	0
LV Fire Dept	4	0	31	3	10	1	25	1
LV Metro	11	0	51	0	16	0	91	0
Lyon SO	0	0	2	2	1	1	2	1
Mesquite PD	0	0	0	0	0	0	0	0
Mineral SO	0	0	0	0	0	0	0	0
NLVPD	1	0	7	1	0	0	9	2
Nye SO	3	1	9	3	2	2	3	2
Pershing SO	0	0	0	0	0	0	0	0
Reno PD	3	1	9	4	1	0	12	1
Sparks PD	9	8	10	9	4	1	15	2
Storey SO	1	0	2	1	0	0	0	0
Taxicab Authority	0	0	0	0	0	0	0	0
TMCC PD	0	0	0	0	0	0	0	0
UNLV PD	0	0	0	0	0	0	0	0
UNR PD	0	0	0	0	0	0	0	0
Washoe SO	0	0	1	1	0	0	1	0
Washoe CO Scl PD	1	1	8	7	0	0	5	0
Wendover PD	0	0	0	0	0	0	1	0
White Pine SO	0	0	0	0	0	0	2	1
Winnemucca PD	1	1	1	1	0	0	1	0
Yerington PD	0	0	0	0	0	0	0	0
TOTALS	44	19	184	47	49	14	248	34

State of Nevada

Hate Crimes Reports for MAY 2010

#	Agency	Date of Incident	UCR Offense	Location	Bias Motivation	Victim Type and Number	Offender Race and Number
1	LAS VEGAS METRO PD	5/1/2010	AGGRAVATED ASSAULT	HIGHWAY/ROAD/ALLEY/STREET	ANTI-MALE HOMOSEXUAL(GAY)	INDIVIDUAL-01	WHITE-01
2	LAS VEGAS METRO PD	5/1/2010	SIMPLE ASSAULT	RESIDENCE/HOME	ANTI-HISPANIC	INDIVIDUAL-01	WHITE-01
3	LAS VEGAS METRO PD	5/3/2010	DESTRUCTION/DAMAGE/VANDALISM	RESIDENCE/HOME	ANTI-JEWISH	INDIVIDUAL-01	UNKNOWN-00
4	LAS VEGAS METRO PD	5/4/2010	SIMPLE ASSAULT	COMMERCIAL/OFFICE BUILDING	ANTI-BLACK	INDIVIDUAL-01	WHITE-01
5	LAS VEGAS METRO PD	5/11/2010	SIMPLE ASSAULT	RESTAURANT	ANTI-HISPANIC	INDIVIDUAL-02	WHITE-01
6	LAS VEGAS METRO PD	5/21/2010	SIMPLE ASSAULT	HIGHWAY/ROAD/ALLEY/STREET	ANTI-BLACK	INDIVIDUAL-01	WHITE-01
7	LAS VEGAS METRO PD	5/21/2010	DESTRUCTION/DAMAGE/VANDALISM	OTHER/UNKNOWN	ANTI-BLACK	SOCIETY/PUBLIC-01	UNKNOWN-00
8	LAS VEGAS METRO PD	5/22/2010	DESTRUCTION/DAMAGE/VANDALISM	CHURCH/SYNAGOGUE/TEMPLE	ANTI-JEWISH	INDIVIDUAL/ RELIGIOUS ORGANIZATION-01	UNKNOWN-00
9	LAS VEGAS METRO PD	5/22/2010	AGGRAVATED ASSAULT	RESIDENCE/HOME	ANTI-MALE HOMOSEXUAL(GAY)	INDIVIDUAL-01	WHITE-01
10	LAS VEGAS METRO PD	5/29/2010	DESTRUCTION/DAMAGE/VANDALISM	RESIDENCE/HOME	ANTI-JEWISH	INDIVIDUAL-01	UNKNOWN-00
11	NORTH LAS VEGAS PD	5/21/2010	SIMPLE ASSAULT	JAIL/PRISON	ANTI-BLACK	INDIVIDUAL-01	WHITE-01

Stolen/Recovered Property Report

May 2010

Property Type	Boulder PD	Carlin PD	Carson SO	Churchill SO	Clark Co Schl PD	Douglas SO	Elko PD	Elko SO	Esmeralda SO
Currency									
Stolen	\$0	\$29	\$4,626	\$15	\$909	\$14,001	\$6,594	\$0	\$0
Recovered	\$0	\$29	\$0	\$15	\$60	\$61	\$0	\$0	\$0
% Recovered	0.0%	100.0%	0.0%	100.0%	6.6%	0.4%	0.0%	0.0%	0.0%
Jewelry									
Stolen	\$3,000	\$0	\$5,009	\$0	\$1,000	\$20,125	\$9,588	\$30	\$0
Recovered	\$0	\$0	\$0	\$0	\$0	\$0	\$200	\$0	\$0
% Recovered	0.0%	0.0%	0.0%	0.0%	0.0%	0.0%	2.1%	0.0%	0.0%
Clothing									
Stolen	\$0	\$0	\$176	\$0	\$265	\$668	\$571	\$0	\$0
Recovered	\$0	\$0	\$31	\$0	\$30	\$0	\$0	\$0	\$0
% Recovered	0.0%	0.0%	17.6%	0.0%	11.3%	0.0%	0.0%	0.0%	0.0%
Motor Vehicle									
Stolen	\$0	\$0	\$36,250	\$4,500	\$0	\$14,000	\$350	\$5,000	\$0
Recovered	\$0	\$0	\$31,000	\$3,000	\$0	\$13,000	\$0	\$0	\$0
% Recovered	0.0%	0.0%	85.5%	66.7%	0.0%	92.9%	0.0%	0.0%	0.0%
Office Equipment									
Stolen	\$0	\$0	\$5,625	\$0	\$12,223	\$0	\$1,394	\$0	\$0
Recovered	\$0	\$0	\$0	\$0	\$2,069	\$0	\$0	\$0	\$0
% Recovered	0.0%	0.0%	0.0%	0.0%	16.9%	0.0%	0.0%	0.0%	0.0%
TV, VCR, Camera, Etc.									
Stolen	\$0	\$0	\$6,329	\$2,650	\$79,350	\$4,875	\$6,673	\$0	\$0
Recovered	\$0	\$0	\$0	\$0	\$0	\$0	\$300	\$0	\$0
% Recovered	0.0%	0.0%	0.0%	0.0%	0.0%	0.0%	4.5%	0.0%	0.0%
Firearm									
Stolen	\$0	\$0	\$1,465	\$660	\$0	\$500	\$200	\$352	\$0
Recovered	\$0	\$0	\$585	\$500	\$0	\$0	\$1,000	\$0	\$0
% Recovered	0.0%	0.0%	39.9%	75.8%	0.0%	0.0%	500.0%	0.0%	0.0%
Household Goods									
Stolen	\$1,000	\$0	\$0	\$0	\$0	\$220	\$3,897	\$0	\$0
Recovered	\$0	\$0	\$0	\$0	\$0	\$220	\$30	\$0	\$0
% Recovered	0.0%	0.0%	0.0%	0.0%	0.0%	100.0%	0.8%	0.0%	0.0%
Consumable Goods									
Stolen	\$0	\$9,356	\$91	\$0	\$17	\$500	\$27	\$0	\$0
Recovered	\$0	\$0	\$19	\$0	\$17	\$36	\$0	\$0	\$0
% Recovered	0.0%	0.0%	20.9%	0.0%	100.0%	7.2%	0.0%	0.0%	0.0%
Livestock									
Stolen	\$0	\$0	\$0	\$900	\$0	\$0	\$0	\$0	\$0
Recovered	\$0	\$0	\$0	\$0	\$0	\$0	\$0	\$0	\$0
% Recovered	0.0%	0.0%	0.0%	0.0%	0.0%	0.0%	0.0%	0.0%	0.0%
Misc.									
Stolen	\$3,636	\$250	\$35,178	\$10,598	\$37,208	\$77,311	\$25,117	\$16	\$0
Recovered	\$0	\$0	\$3,069	\$685	\$11,561	\$5,235	\$5,429	\$1	\$0
% Recovered	0.0%	0.0%	8.7%	6.5%	31.1%	6.8%	21.6%	6.3%	0.0%
TOTALS									
Stolen	\$7,636	\$9,635	\$94,749	\$19,323	\$130,972	\$132,200	\$54,411	\$5,398	\$0
Recovered	\$0	\$29	\$34,704	\$4,200	\$13,737	\$18,552	\$6,959	\$1	\$0
% Recovered	0.0%	0.3%	36.6%	21.7%	10.5%	14.0%	12.8%	0.0%	0.0%

Stolen/Recovered Property Report

May 2010

Property Type	Eureka SO	Fallon PD	Henderson PD	Humboldt SO	Lander SO	Las Vegas Metro	Lincoln SO	Lovelock PD	Lyon SO
Currency									
Stolen	\$0	\$620	\$42,523	\$775	\$0	\$1,014,783	\$0	\$0	\$967
Recovered	\$0	\$0	\$3,020	\$675	\$0	\$23,009	\$0	\$0	\$600
% Recovered	0.0%	0.0%	7.1%	87.1%	0.0%	2.3%	0.0%	0.0%	62.0%
Jewelry									
Stolen	\$0	\$0	\$213,439	\$5,000	\$3,700	\$1,944,788	\$0	\$0	\$1,290
Recovered	\$0	\$0	\$8,186	\$0	\$0	\$39,562	\$0	\$0	\$0
% Recovered	0.0%	0.0%	3.8%	0.0%	0.0%	2.0%	0.0%	0.0%	0.0%
Clothing									
Stolen	\$0	\$0	\$28,764	\$200	\$0	\$440,631	\$0	\$0	\$20
Recovered	\$0	\$0	\$4,891	\$200	\$0	\$23,501	\$0	\$0	\$0
% Recovered	0.0%	0.0%	17.0%	100.0%	0.0%	5.3%	0.0%	0.0%	0.0%
Motor Vehicle									
Stolen	\$0	\$0	\$565,036	\$0	\$0	\$775,142	\$0	\$0	\$38,160
Recovered	\$0	\$0	\$442,900	\$0	\$0	\$460,727	\$0	\$0	\$26,760
% Recovered	0.0%	0.0%	78.4%	0.0%	0.0%	59.4%	0.0%	0.0%	70.1%
Office Equipment									
Stolen	\$0	\$0	\$32,349	\$0	\$300	\$683,948	\$0	\$0	\$2,971
Recovered	\$0	\$0	\$1,500	\$0	\$0	\$8,503	\$0	\$0	\$0
% Recovered	0.0%	0.0%	4.6%	0.0%	0.0%	1.2%	0.0%	0.0%	0.0%
TV, VCR, Camera, Etc.									
Stolen	\$0	\$290	\$55,849	\$300	\$0	\$977,975	\$0	\$0	\$15,896
Recovered	\$0	\$0	\$5,934	\$0	\$0	\$20,604	\$0	\$0	\$1,008
% Recovered	0.0%	0.0%	10.6%	0.0%	0.0%	2.1%	0.0%	0.0%	6.3%
Firearm									
Stolen	\$0	\$0	\$12,505	\$2,200	\$1,224	\$44,358	\$0	\$0	\$1,150
Recovered	\$0	\$0	\$1,700	\$0	\$0	\$12,612	\$0	\$0	\$400
% Recovered	0.0%	0.0%	13.6%	0.0%	0.0%	28.4%	0.0%	0.0%	34.8%
Household Goods									
Stolen	\$0	\$0	\$7,048	\$500	\$0	\$386,224	\$0	\$0	\$0
Recovered	\$0	\$0	\$61	\$0	\$0	\$1,278	\$0	\$0	\$0
% Recovered	0.0%	0.0%	0.9%	0.0%	0.0%	0.3%	0.0%	0.0%	0.0%
Consumable Goods									
Stolen	\$0	\$36	\$20,023	\$900	\$1,248	\$70,542	\$0	\$310	\$7,100
Recovered	\$0	\$24	\$2,972	\$0	\$0	\$9,220	\$0	\$52	\$148
% Recovered	0.0%	66.7%	14.8%	0.0%	0.0%	13.1%	0.0%	16.8%	2.1%
Livestock									
Stolen	\$0	\$0	\$500	\$0	\$0	\$0	\$0	\$0	\$0
Recovered	\$0	\$0	\$0	\$0	\$0	\$0	\$0	\$0	\$0
% Recovered	0.0%	0.0%	0.0%	0.0%	0.0%	0.0%	0.0%	0.0%	0.0%
Misc.									
Stolen	\$1,015	\$3,965	\$204,988	\$985	\$16,035	\$1,877,121	\$1,000	\$435	\$26,159
Recovered	\$0	\$702	\$15,506	\$0	\$3	\$149,649	\$0	\$0	\$155
% Recovered	0.0%	17.7%	7.6%	0.0%	0.0%	8.0%	0.0%	0.0%	0.6%
TOTALS									
Stolen	\$1,015	\$4,911	\$1,183,024	\$10,860	\$22,507	\$8,215,512	\$1,000	\$745	\$93,713
Recovered	\$0	\$726	\$486,670	\$875	\$3	\$748,665	\$0	\$52	\$29,071
% Recovered	0.0%	14.8%	41.1%	8.1%	0.0%	9.1%	0.0%	7.0%	31.0%

Stolen/Recovered Property Report

May 2010

Property Type	Mesquite PD	Mineral SO	NLVPD	Nye SO	Pershing SO	Reno PD	Sparks PD	Storey SO	Taxicab	TMCC PD
Currency										
Stolen	\$885	\$0	\$19,205	\$22,651	\$0	\$60,376	\$12,373	\$0	\$1,921	\$17
Recovered	\$0	\$0	\$400	\$1,500	\$0	\$197	\$163	\$0	\$0	\$0
% Recovered	0.0%	0.0%	2.1%	6.6%	0.0%	0.3%	1.3%	0.0%	0.0%	0.0%
Jewelry										
Stolen	\$0	\$0	\$108,757	\$15,900	\$0	\$99,434	\$14,998	\$1,750	\$0	\$0
Recovered	\$0	\$0	\$706	\$1,300	\$0	\$1,086	\$3,050	\$0	\$0	\$0
% Recovered	0.0%	0.0%	0.6%	8.2%	0.0%	1.1%	20.3%	0.0%	0.0%	0.0%
Clothing										
Stolen	\$0	\$0	\$68,723	\$1,449	\$0	\$9,825	\$3,812	\$0	\$60	\$0
Recovered	\$0	\$0	\$1,651	\$150	\$0	\$2,316	\$2,655	\$0	\$0	\$0
% Recovered	0.0%	0.0%	2.4%	10.4%	0.0%	23.6%	69.6%	0.0%	0.0%	0.0%
Motor Vehicle										
Stolen	\$500	\$0	\$656,959	\$89,000	\$1,500	\$276,776	\$260,300	\$0	\$0	\$0
Recovered	\$500	\$0	\$446,000	\$13,500	\$0	\$186,228	\$68,800	\$0	\$0	\$0
% Recovered	100.0%	0.0%	67.9%	15.2%	0.0%	67.3%	26.4%	0.0%	0.0%	0.0%
Office Equipment										
Stolen	\$0	\$0	\$1,904	\$33,500	\$0	\$85,784	\$16,742	\$2,000	\$0	\$0
Recovered	\$0	\$0	\$4	\$4,000	\$0	\$3,170	\$1,085	\$0	\$0	\$0
% Recovered	0.0%	0.0%	0.2%	11.9%	0.0%	3.7%	6.5%	0.0%	0.0%	0.0%
TV, VCR, Camera, Etc.										
Stolen	\$0	\$600	\$201,958	\$43,155	\$0	\$62,781	\$26,769	\$0	\$3,550	\$0
Recovered	\$0	\$0	\$3,830	\$250	\$0	\$800	\$3,814	\$0	\$0	\$0
% Recovered	0.0%	0.0%	1.9%	0.6%	0.0%	1.3%	14.2%	0.0%	0.0%	0.0%
Firearm										
Stolen	\$0	\$0	\$5,420	\$3,740	\$0	\$13,880	\$16,001	\$300	\$0	\$0
Recovered	\$0	\$0	\$0	\$750	\$0	\$0	\$170	\$0	\$0	\$0
% Recovered	0.0%	0.0%	0.0%	20.1%	0.0%	0.0%	1.1%	0.0%	0.0%	0.0%
Household Goods										
Stolen	\$0	\$0	\$21,297	\$55,662	\$0	\$4,962	\$21,980	\$0	\$0	\$0
Recovered	\$0	\$0	\$1,733	\$0	\$0	\$0	\$275	\$0	\$0	\$0
% Recovered	0.0%	0.0%	8.1%	0.0%	0.0%	0.0%	1.3%	0.0%	0.0%	0.0%
Consumable Goods										
Stolen	\$18	\$10	\$2,957	\$2,161	\$0	\$936	\$973	\$32	\$0	\$0
Recovered	\$17	\$0	\$305	\$164	\$0	\$909	\$236	\$0	\$0	\$0
% Recovered	94.4%	0.0%	10.3%	7.6%	0.0%	97.1%	24.3%	0.0%	0.0%	0.0%
Livestock										
Stolen	\$0	\$0	\$0	\$125	\$0	\$0	\$0	\$0	\$0	\$0
Recovered	\$0	\$0	\$0	\$0	\$0	\$0	\$0	\$0	\$0	\$0
% Recovered	0.0%	0.0%	0.0%	0.0%	0.0%	0.0%	0.0%	0.0%	0.0%	0.0%
Misc.										
Stolen	\$3,549	\$1,120	\$392,617	\$66,288	\$0	\$227,554	\$34,829	\$20	\$0	\$0
Recovered	\$405	\$200	\$35,522	\$19	\$0	\$10,868	\$3,400	\$0	\$0	\$0
% Recovered	11.4%	17.9%	9.0%	0.0%	0.0%	4.8%	9.8%	0.0%	0.0%	0.0%
TOTALS										
Stolen	\$4,952	\$1,730	\$1,479,797	\$333,631	\$1,500	\$842,308	\$408,777	\$4,102	\$5,531	\$17
Recovered	\$922	\$200	\$490,151	\$21,633	\$0	\$205,574	\$83,648	\$0	\$0	\$0
% Recovered	18.6%	11.6%	33.1%	6.5%	0.0%	24.4%	20.5%	0.0%	0.0%	0.0%

Stolen/Recovered Property Report

May 2010

Property Type	UNLV PD	UNR PD	Washoe SO	Washoe Co Schl PD	Wendover PD	White Pine SO	Winnemucca PD	Yerington PD	Total By Property
Currency									
Stolen	\$370	\$120	\$9,781	\$2	\$500	\$800	\$100	\$0	\$1,214,943
Recovered	\$0	\$0	\$0	\$2	\$0	\$490	\$0	\$0	\$30,221
% Recovered	0.0%	0.0%	0.0%	100.0%	0.0%	61.3%	0.0%	0.0%	2.5%
Jewelry									
Stolen	\$0	\$0	\$15,139	\$0	\$0	\$0	\$0	\$0	\$2,462,947
Recovered	\$0	\$0	\$0	\$0	\$0	\$0	\$0	\$0	\$54,090
% Recovered	0.0%	0.0%	0.0%	0.0%	0.0%	0.0%	0.0%	0.0%	2.2%
Clothing									
Stolen	\$445	\$0	\$1,190	\$0	\$0	\$0	\$0	\$0	\$556,799
Recovered	\$20	\$0	\$0	\$0	\$0	\$0	\$0	\$0	\$35,445
% Recovered	4.5%	0.0%	0.0%	0.0%	0.0%	0.0%	0.0%	0.0%	6.4%
Motor Vehicle									
Stolen	\$1,500	\$0	\$93,200	\$0	\$500	\$0	\$8,500	\$0	\$2,827,173
Recovered	\$0	\$0	\$96,600	\$0	\$500	\$0	\$0	\$0	\$1,789,515
% Recovered	0.0%	0.0%	103.6%	0.0%	100.0%	0.0%	0.0%	0.0%	63.3%
Office Equipment									
Stolen	\$299	\$250	\$17,135	\$2,000	\$0	\$0	\$0	\$0	\$898,424
Recovered	\$0	\$0	\$0	\$0	\$0	\$0	\$0	\$0	\$20,331
% Recovered	0.0%	0.0%	0.0%	0.0%	0.0%	0.0%	0.0%	0.0%	2.3%
TV, VCR, Camera, Etc.									
Stolen	\$21,083	\$0	\$7,036	\$7,243	\$600	\$235	\$400	\$0	\$1,525,597
Recovered	\$29,674	\$0	\$0	\$3,329	\$0	\$175	\$0	\$0	\$69,718
% Recovered	140.7%	0.0%	0.0%	46.0%	0.0%	74.5%	0.0%	0.0%	4.6%
Firearm									
Stolen	\$0	\$0	\$1,975	\$0	\$0	\$900	\$0	\$0	\$106,830
Recovered	\$0	\$0	\$0	\$0	\$0	\$500	\$0	\$0	\$18,217
% Recovered	0.0%	0.0%	0.0%	0.0%	0.0%	55.6%	0.0%	0.0%	17.1%
Household Goods									
Stolen	\$0	\$0	\$2,340	\$200	\$0	\$786	\$0	\$0	\$506,116
Recovered	\$0	\$0	\$100	\$200	\$0	\$0	\$0	\$0	\$3,897
% Recovered	0.0%	0.0%	4.3%	100.0%	0.0%	0.0%	0.0%	0.0%	0.8%
Consumable Goods									
Stolen	\$0	\$0	\$0	\$0	\$10	\$3	\$245	\$0	\$117,495
Recovered	\$0	\$0	\$0	\$0	\$0	\$0	\$65	\$0	\$14,184
% Recovered	0.0%	0.0%	0.0%	0.0%	0.0%	0.0%	26.5%	0.0%	12.1%
Livestock									
Stolen	\$0	\$0	\$0	\$0	\$600	\$0	\$0	\$0	\$2,125
Recovered	\$0	\$0	\$0	\$0	\$0	\$0	\$0	\$0	\$0
% Recovered	0.0%	0.0%	0.0%	0.0%	0.0%	0.0%	0.0%	0.0%	0.0%
Misc.									
Stolen	\$30,119	\$5,575	\$39,987	\$1,045	\$3,452	\$5,303	\$2,796	\$6,586	\$3,141,857
Recovered	\$28,909	\$40	\$21,834	\$1,045	\$0	\$0	\$0	\$500	\$294,737
% Recovered	96.0%	0.7%	54.6%	100.0%	0.0%	0.0%	0.0%	7.6%	9.4%
TOTALS									
Stolen	\$53,816	\$5,945	\$187,783	\$10,490	\$5,662	\$8,027	\$12,041	\$6,586	\$13,360,306
Recovered	\$58,603	\$40	\$118,534	\$4,576	\$500	\$1,165	\$65	\$500	\$2,330,355
% Recovered	108.9%	0.7%	63.1%	43.6%	8.8%	14.5%	0.5%	7.6%	17.4%

Nevada--Assaults on Officers by Agency--UCR

May 2010

Agency	May 2010 Offenses	May 2010 Cleared	2010 YTD Offenses	2010 YTD Cleared	May 2009 Offenses	May 2009 Cleared	2009 YTD Offenses	2009 YTD Cleared
Boulder	0	0	0	0	0	0	0	0
Carlin PD	1	1	2	1	0	0	1	0
Carson SO	2	2	6	6	0	0	8	8
Churchill SO	0	0	2	2	0	0	1	1
ClrkSchlDst PD	2	2	19	19	3	3	12	12
Douglas SO	0	0	5	5	0	0	2	1
Elko PD	0	0	7	7	1	1	5	5
Elko SO	0	0	0	0	0	0	0	0
Esmeralda SO	0	0	0	0	0	0	0	0
Eureka SO	0	0	0	0	0	0	0	0
Fallon PD	0	0	0	0	0	0	1	0
Henderson PD	3	3	17	17	3	3	13	11
Highway Patrol	0	0	0	0	1	0	6	6
Humboldt SO	0	0	0	0	0	0	0	0
Lander SO	0	0	0	0	0	0	0	0
Lincoln SO	0	0	0	0	0	0	3	3
Lovelock PD	0	0	0	0	0	0	0	0
LV Fire Dept	0	0	0	0	0	0	0	0
LV Metro	11	11	36	36	37	37	117	117
Lyon SO	1	0	4	2	0	0	4	4
Mesquite PD	0	0	0	0	0	0	2	2
Mineral SO	0	0	0	0	0	0	1	1
NV Div Investigations	0	0	0	0	0	0	0	0
NLVPD	8	8	49	48	8	8	38	36
Nye SO	3	3	13	13	0	0	3	0
Pershing SO	0	0	0	0	0	0	0	0
Reno PD	5	5	15	15	2	2	13	13
Sparks PD	1	0	6	0	0	0	6	0
Storey SO	0	0	2	2	0	0	2	1
Taxicab Authority	0	0	0	0	0	0	0	0
TMCC PD	0	0	0	0	0	0	0	0
UNLV PD	1	1	3	3	0	0	1	1
UNR PD	0	0	0	0	0	0	0	0
Washoe SO	0	0	0	0	0	0	6	0
Washoe Co Schl PD	0	0	0	0	0	0	0	0
Wendover PD	1	1	1	1	0	0	0	0
White Pine SO	0	0	0	0	0	0	0	0
Winnemucca PD	0	0	0	0	1	1	2	2
Yerington PD	0	0	0	0	0	0	0	0
TOTALS	39	37	187	177	56	55	247	224

Nevada -- Assaults by Agency/Weapon/Assignment -- UCR

May 2010

Agency	Total Assaults	Number Cleared	Firearm	Knife / Cutting Device	Other Danger. Weapon	Hands, Fists, Feet, Etc.	2-Officer Vehicle	1-Officer Vehicle- Alone	1-Officer Vehicle- Assisted	Det./Spec. Assign. - Alone	Det./Spec. Assign. - Assisted	Other- Alone	Other- Assisted
Boulder City PD	0	0	0	0	0	0	0	0	0	0	0	0	0
Carlin PD	1	1	0	0	0	1	0	1	0	0	0	0	0
Carson City SO	2	2	0	0	0	2	0	0	2	0	0	0	0
Churchill Co SO	0	0	0	0	0	0	0	0	0	0	0	0	0
Clark School Dist PD	2	2	0	0	0	2	0	0	0	0	0	1	1
Douglas Co SO	0	0	0	0	0	0	0	0	0	0	0	0	0
Elko PD	0	0	0	0	0	0	0	0	0	0	0	0	0
Elko Co SO	0	0	0	0	0	0	0	0	0	0	0	0	0
Esmeralda Co SO	0	0	0	0	0	0	0	0	0	0	0	0	0
Eureka Co SO	0	0	0	0	0	0	0	0	0	0	0	0	0
Fallon PD	0	0	0	0	0	0	0	0	0	0	0	0	0
Henderson PD	3	3	0	0	0	3	1	2	0	0	0	0	0
NV Highway Patrol	0	0	0	0	0	0	0	0	0	0	0	0	0
Humboldt Co SO	0	0	0	0	0	0	0	0	0	0	0	0	0
Lander Co SO	0	0	0	0	0	0	0	0	0	0	0	0	0
Lincoln Co SO	0	0	0	0	0	0	0	0	0	0	0	0	0
Lovelock PD	0	0	0	0	0	0	0	0	0	0	0	0	0
Las Vegas Fire Dept	0	0	0	0	0	0	0	0	0	0	0	0	0
Las Vegas Metro PD	11	11	5	2	1	3	7	1	1	0	2	0	0
Lyon Co SO	1	0	0	0	0	1	0	0	1	0	0	0	0
Mesquite PD	0	0	0	0	0	0	0	0	0	0	0	0	0
Mineral Co SO	0	0	0	0	0	0	0	0	0	0	0	0	0
NV Div of Investigations	0	0	0	0	0	0	0	0	0	0	0	0	0
North Las Vegas PD	8	8	0	0	0	8	4	2	2	0	0	0	0
Nye Co SO	3	3	1	0	0	2	1	2	0	0	0	0	0
Pershing Co SO	0	0	0	0	0	0	0	0	0	0	0	0	0
Reno PD	5	5	0	0	0	5	4	1	0	0	0	0	0
Sparks PD	1	0	0	0	0	1	0	0	1	0	0	0	0
Storey Co SO	0	0	0	0	0	0	0	0	0	0	0	0	0
Taxi Authority	0	0	0	0	0	0	0	0	0	0	0	0	0
TMCC PD	0	0	0	0	0	0	0	0	0	0	0	0	0
UNLV PD	1	1	0	0	0	1	0	0	0	0	0	1	0
UNR PD	0	0	0	0	0	0	0	0	0	0	0	0	0
Washoe Co SO	0	0	0	0	0	0	0	0	0	0	0	0	0
Washoe Co School PD	0	0	0	0	0	0	0	0	0	0	0	0	0
West Wendover PD	1	1	0	0	0	1	0	0	1	0	0	0	0
White Pine Co SO	0	0	0	0	0	0	0	0	0	0	0	0	0
Winnemucca PD	0	0	0	0	0	0	0	0	0	0	0	0	0
Yerington PD	0	0	0	0	0	0	0	0	0	0	0	0	0
TOTALS	39	37	6	2	1	30	17	9	8	0	2	2	1

Nevada -- Officer Assaults by Activity/Weapon/Assignment -- UCR

May 2010

ACTIVITY TYPE	Total Assaults	Number Cleared	Firearm	Knife / Cutting Device	Other Danger. Weapon	Hands, Fists, Feet, Etc.	2-Officer Vehicle	1-Officer Vehicle- Alone	1-Officer Vehicle- Assisted	Det./Spec. Assign.-Alone	Det./Spec. Assign.- Assisted	Other- Alone	Other- Assisted
DOMESTIC / OTHER DISTURBANCE	24	24	6	2	1	15	14	6	1	0	1	1	1
BURGLARY IN PROGRESS	0	0	0	0	0	0	0	0	0	0	0	0	0
ROBBERY IN PROGRESS	0	0	0	0	0	0	0	0	0	0	0	0	0
ATTEMPTING OTHER ARREST	2	2	0	0	0	2	2	0	0	0	0	0	0
CIVIL DISORDER	0	0	0	0	0	0	0	0	0	0	0	0	0
HANDLING PRISONER	5	4	0	0	0	5	0	1	4	0	0	0	0
INVEST. SUSP. PERSONS / CIRCUM.	6	5	0	0	0	6	1	1	2	0	1	1	0
AMBUSH-NO WARNING	0	0	0	0	0	0	0	0	0	0	0	0	0
MENTALLY DERANGED	0	0	0	0	0	0	0	0	0	0	0	0	0
TRAFFIC PURSUITS / STOPS	2	2	0	0	0	2	0	1	1	0	0	0	0
ALL OTHER	0	0	0	0	0	0	0	0	0	0	0	0	0
TOTALS	39	37	6	2	1	30	17	9	8	0	2	2	1

Nevada--Assaults with Injury/without Injury--UCR

May 2010

Agency	Total Assaults by weapon	Firearm		Knife or Other Cutting Instruments		Other Dangerous weapons		Hands, Fists, Feet, Etc.	
		With personal injury	Without personal injury	With personal injury	Without personal injury	With personal injury	Without personal injury	With personal injury	Without personal injury
Boulder City PD	0	0	0	0	0	0	0	0	0
Carlin PD	1	0	1	0	0	0	0	0	1
Carson City SO	2	0	2	0	0	0	0	0	2
Churchill Co SO	0	0	0	0	0	0	0	0	0
Clark Co Schl Dist PD	2	0	2	0	0	0	0	0	2
Douglas Co SO	0	0	0	0	0	0	0	0	0
Elko Co SO	0	0	0	0	0	0	0	0	0
Elko PD	0	0	0	0	0	0	0	0	0
Esmeralda Co SO	0	0	0	0	0	0	0	0	0
Eureka Co SO	0	0	0	0	0	0	0	0	0
Fallon PD	0	0	0	0	0	0	0	0	0
Henderson PD	3	1	2	0	0	0	0	1	2
NV Highway Patrol	0	0	0	0	0	0	0	0	0
Humboldt Co SO	0	0	0	0	0	0	0	0	0
Lander Co SO	0	0	0	0	0	0	0	0	0
Las Vegas Metro PD	11	3	8	0	5	0	2	3	0
Lincoln Co SO	0	0	0	0	0	0	0	0	0
Lovelock PD	0	0	0	0	0	0	0	0	0
Lyon Co SO	1	0	1	0	0	0	0	0	1
Mesquite PD	0	0	0	0	0	0	0	0	0
Mineral Co SO	0	0	0	0	0	0	0	0	0
NV Div Investigations	0	0	0	0	0	0	0	0	0
North Las Vegas PD	8	1	7	0	0	0	0	1	7
Nye Co SO	3	1	2	0	1	0	0	1	1
Pershing Co SO	0	0	0	0	0	0	0	0	0
Reno PD	5	0	5	0	0	0	0	0	5
Sparks PD	1	0	1	0	0	0	0	0	1
Storey Co SO	0	0	0	0	0	0	0	0	0
Taxicab Authority	0	0	0	0	0	0	0	0	0
TMCC PD	0	0	0	0	0	0	0	0	0
UNLV PD	1	0	1	0	0	0	0	0	1
UNR PD	0	0	0	0	0	0	0	0	0
Washoe Co SO	0	0	0	0	0	0	0	0	0
Washoe Co School Dist.	0	0	0	0	0	0	0	0	0
West Wendover PD	1	0	1	0	0	0	0	0	1
White Pine Co SO	0	0	0	0	0	0	0	0	0
Winnemucca PD	0	0	0	0	0	0	0	0	0
Yerington PD	0	0	0	0	0	0	0	0	0
Totals	39	6	33	0	6	0	2	6	24

Nevada--Time of Assaults on Officers--UCR

May 2010

Agency	12:01-2:00 AM	2:00-4:00 AM	4:00-6:00 AM	6:00-8:00 AM	8:00-10:00 AM	10:00-12:00 AM	12:01-2:00 PM	2:00-4:00 PM	4:00-6:00 PM	6:00-8:00 PM	8:00-10:00 PM	10:00-12:00 PM
Boulder City PD	0	0	0	0	0	0	0	0	0	0	0	0
Carlin PD	1	0	0	0	0	0	0	0	0	0	0	0
Carson City SO	1	1	0	0	0	0	0	0	0	0	0	0
Churchill Co SO	0	0	0	0	0	0	0	0	0	0	0	0
Clark Co Schl Dist PD	0	0	0	0	1	0	0	1	0	0	0	0
Douglas Co SO	0	0	0	0	0	0	0	0	0	0	0	0
Elko Co SO	0	0	0	0	0	0	0	0	0	0	0	0
Elko PD	0	0	0	0	0	0	0	0	0	0	0	0
Esmeralda Co SO	0	0	0	0	0	0	0	0	0	0	0	0
Eureka Co SO	0	0	0	0	0	0	0	0	0	0	0	0
Fallon PD	0	0	0	0	0	0	0	0	0	0	0	0
Henderson PD	0	0	1	0	1	0	0	0	0	0	1	0
Highway Patrol	0	0	0	0	0	0	0	0	0	0	0	0
Humboldt Co SO	0	0	0	0	0	0	0	0	0	0	0	0
Lander Co SO	0	0	0	0	0	0	0	0	0	0	0	0
Las Vegas Metro PD	0	0	2	0	0	0	0	0	0	0	6	3
Lincoln Co SO	0	0	0	0	0	0	0	0	0	0	0	0
Lovelock PD	0	0	0	0	0	0	0	0	0	0	0	0
Lyon Co SO	0	0	0	0	0	0	0	0	0	0	1	0
Mesquite PD	0	0	0	0	0	0	0	0	0	0	0	0
Mineral Co SO	0	0	0	0	0	0	0	0	0	0	0	0
NV Div Investigations	0	0	0	0	0	0	0	0	0	0	0	0
North LV PD	0	1	0	0	1	0	0	4	0	0	1	1
Nye Co SO	0	0	0	0	0	0	1	0	2	0	0	0
Pershing Co SO	0	0	0	0	0	0	0	0	0	0	0	0
Reno PD	1	0	0	0	0	0	2	0	1	0	1	0
Sparks PD	0	0	0	0	0	0	0	0	0	0	0	1
Storey Co SO	0	0	0	0	0	0	0	0	0	0	0	0
Taxicab Authority	0	0	0	0	0	0	0	0	0	0	0	0
TMCC PD	0	0	0	0	0	0	0	0	0	0	0	0
UNLV PD	0	0	0	0	0	0	0	0	0	0	0	1
UNR PD	0	0	0	0	0	0	0	0	0	0	0	0
Washoe Co SO	0	0	0	0	0	0	0	0	0	0	0	0
Washoe Co Schl PD	0	0	0	0	0	0	0	0	0	0	0	0
West Wendover PD	0	0	0	0	1	0	0	0	0	0	0	0
White Pine Co SO	0	0	0	0	0	0	0	0	0	0	0	0
Winnemucca PD	0	0	0	0	0	0	0	0	0	0	0	0
Yerington PD	0	0	0	0	0	0	0	0	0	0	0	0
Totals	3	2	3	0	4	0	3	5	3	0	10	6

Nevada -- Division Of Investigations
Arrests for Narcotics Violations

MAY 2010

		10- 13-										25- 30- 35- 40- 45- 50- 55- 60-										64										Total	W	B	A	I																																																																																																																																																																																																																																																																																																																																																																																																																																																																																																																																																																																																																																																																																																																																																																																																																																																																																																																																																																																																																																																																																																																																																																																																																																																																																																																																																																																							
		<10	12	14	15	16	17	18	19	20	21	22	23	24	29	34	39	44	49	54	59	64	>64																																																																																																																																																																																																																																																																																																																																																																																																																																																																																																																																																																																																																																																																																																																																																																																																																																																																																																																																																																																																																																																																																																																																																																																																																																																																																																																																																																																																				</

May 2010

AGE, RACE AND SEX OF PERSONS CHARGED

18 Years of Age and over

CLASSIFICATION OF OFFENSES		SEX	18	19	20	21	22	23	24	25-29	30-34	35-39	40-44	45-49	50-54	55-59	60-64	over 65	Total Over 18	RACE			
																				White	Black	American Indian or Alaskan Native	Asian or Pacific Islander
Murder and Nonnegligent Manslaughter	01a	Male					1			2	1		1	1	1		1		8				
		Female																	0	7	1		
Manslaughter by Negligence	01b	Male	1							1									2				
		Female				2		1				2	2	1	1				1	3			
Forcible Rape	02	Male									2	2	1						8				
		Female																	0	4	3		1
Robbery	03	Male	11	11	4	5	4	6	2	22	24	7	9	11	7	1	1		125				
		Female				1	1	1		2	2	2	1						10	70	63	1	1
Aggravated Assault (Return A-4a-d)	04	Male	4	12	10	9	14	7	11	51	42	26	29	26	27	9	7	6	290				
		Female	1	1		2	2	7	3	20	17	16	17	7	8	2	1	2	106	275	98	8	15
Burglary--Breaking or Entering	05	Male	12	3	9	7	2	3	7	25	17	10	12	13	2	3			125				
		Female	3	2	2	2			1		11	9	3	6	2	2			2	45	136	29	5
Larceny--Theft (except Motor Vehicle Theft)	06	Male	26	23	27	17	20	21	13	64	61	34	50	37	31	12	8	5	449				
		Female	36	24	26	17	18	18	15	51	40	37	16	20	24	8	4	3	357	583	198	7	18
Motor Vehicle Theft	07	Male	4	4	1	8	4	2		7	5	3	2	1	1				42				
		Female				1					1	2		1	1				6	34	12		2
Other Assaults (Return A-4e)	08	Male	28	24	28	54	46	49	36	181	143	135	109	100	62	23	12	23	1053				
		Female	14	21	15	22	19	20	23		74	58	57	24	40	32	3	2	9	433	1081	334	14
Arson	09	Male			1						3	2	2			1			9				
		Female											1				1		2	9	1		1
Forgery & Counterfeiting	10	Male	1		1	2	2	1	2	15	8	6	7	8	2	2	1		58				
		Female			1	2			1	1	3	3	3	2	4				20	57	18		3
Fraud	11	Male	1	3		2	5	5	3	16	19	7	9	8	6	1	1		86				
		Female		1	2	4	2	2	3	11	6	4	4	5	7	3	1		55	108	27	3	3
Embezzlement	12	Male		2	2	1	3		1	2	2	1	1	3	1				19				
		Female		1	1	1				1		1	1	4	4	1	1		16	28	4		3
Stolen Property; Buying, Receiving, Possessing	13	Male	6	4	2	8	2	5	6	9	19	8	10	4	3	2			88				
		Female			2	3	2	1	2	2	10	3							25	85	28		
Vandalism	14	Male	8	6	10	2	1	7	5	23	12	10	9	11	5	5	1	1	116				
		Female	3		1	1				2	1	4	3	2			1	1	20	106	28	1	1
Weapons; Carrying, Possessing, etc.	15	Male	6	6	6	4	4	2	5	16	17	7	15	14	6	3	6	1	118				
		Female	1		1	2	1	1		3	3		3						15	108	20	1	4
Prostitution and Commercialized Vice	16	Male	3	1	5	1	1		2	7	9	7	3	2	3	1	1		46				
		Female	18	11	22	20	16	10	14	37	17	25	18	13	12	3	2		238	137	125	1	21
Sex Offenses (except Forcible Rape and Prostitution)	17	Male	5	2	3	5	5	2	3	10	10	11	16	9	14	5	7		107				
		Female	1		1						1	1							4	84	20	4	3
Drug Abuse Violations	18	Male	67	49	56	49	68	51	53	216	173	129	95	62	28	17	7	3	1123				
		Female	12	9	11	15	17	11	22	61	35	32	34	18	13	2	0	1	293	970	409	4	33
(1) Sale/Manufacturing	180	Male	13	3	10	11	9	10	8	47	36	18	10	19	5	3	0	0	202				
		Female	0	2	0	0	0	1	4	8	7	6	5	1	6	1	0	0	41	164	68	0	11
Opium or Cocaine and Their Derivatives (Morphine, Heroin, Codeine)	a	Male	7		4		3	2		13	10	3	4	11		3			60				
		Female							1	4	3				2				10	42	24		4
Marijuana	b	Male	4	3	3	5	3	4	6	19	12	6	2	4					71				
		Female								1	1	1	1						4	41	34		
Synthetic Narcotics-Manufactured Narcotics Which Can Cause True Drug Addiction (Demerol, Methadon)	c	Male			1	1	2	2	2	13	10	6	3	3	5				48				
		Female							1	2	2	4	2	1			1		13	53	3		5
Other Dangerous Non-Narcotic Drugs (Barbiturates, Benzadrine)	d	Male	2		2	5	1	2		2	4	3	1	1					23				
		Female		2				1	2	1	1	1	2		4				14	28	7		2

CLASSIFICATION OF OFFENSES		SEX	18	19	20	21	22	23	24	25-29	30-34	35-39	40-44	45-49	50-54	55-59	60-64	over 65	Total Over 18	RACE			
																				White	Black	American Indian or Alaskan Native	Asian or Pacific Islander
(2) Possession - Subtotal	185	Male	54	46	46	38	59	41	45	169	137	111	85	43	23	14	7	3	921				
		Female	12	7	11	15	17	10	18	53	28	26	29	17	7	1	0	1	252	806	341	4	22
Opium or Cocaine and Their Derivatives (Morphine, Heroin, Codeine)	e	Male	3	2	5	8	7	5	4	27	28	25	15	5	8	6	3	2	153				
		Female	1	3	2	2	3	2	2	9	6	4	8	4				1	47	137	59	2	2
Marijuana	f	Male	47	40	36	23	41	28	29	103	75	48	36	21	9	4	2		542				
		Female	7	3	6	10	7	6	10	26	5	8	5	4	2				99	387	240	2	12
Synthetic Narcotics-Manufactured Narcotics Which Can Cause True Drug Addiction (Demerol, Methadon)	g	Male	3	2	4	4	7	5	7	32	26	28	28	15	5	2	2	1	171				
		Female	1		3	1	7	2	5	14	10	10	12	7	3	1			76	215	27		5
Other Dangerous Non-Narcotic Drugs (Barbiturates, Benzedrine)	h	Male	1	2	1	3	4	3	5	7	8	10	6	2	1	2			55				
		Female	3	1		2			1	4	7	4	4	2	2				30	67	15		3
Gambling Total	19	Male	0	1	0	0	0	0	0	0	0	0	0	0	0	0	0	0	1				
		Female	0	0	1	0	0	0	0	0	0	0	0	0	0	0	0	0	1	2	0	0	0
Bookmaking		Male																	0				
(Horses and Sports Book)	a	Female																	0				
		Male																	0				
Numbers and Lottery	b	Female																	0				
		Male		1															1				
All Other Gambling	c	Female			1														1	2			
Offenses Against Family and Children	20	Male	9	2	4	6	1	1	4	10	10	5	7	3	5				67				
		Female	3	1	1	1			3	17	10	13	4	2	2	2		2	61	109	15	1	3
Driving Under the Influence	21	Male	21	18	25	40	41	41	45	187	143	87	105	86	52	45	24	26	986				
		Female	5	8	10	11	17	12	9	49	54	33	28	32	13	10	8	4	303	1111	121	21	36
Liquor Laws	22	Male	69	78	48	10	8	13	10	21	30	28	48	54	56	34	13	4	524				
		Female	19	26	18	1	1	1	4	8	4	3	9	13	12	4	1		124	496	117	20	15
Drunkeness	23	Male	1	1	1					1	2	3	1	4	2				16				
		Female		1									1						2	15	2	1	
		Male	6	8	2	3	3	6	5	23	18	18	6	19	3	3			123				
Disorderly Conduct	24	Female	1	1			1	1		8	3	5		4		1		1	26	110	26	5	8
		Male	2	3	1	1	2	5		10	11	10	21	32	24	17	4		143				
Vagrancy	25	Female	9	4	13				3	1	3	5	2	2	5	6			53	149	41	2	4
All Other Offenses (except Traffic) Total	26	Male	92	106	135	101	105	108	98	534	414	361	373	402	269	135	60	26	3319				
		Female	34	47	56	67	69	59	84	232	136	112	100	103	35	24	4	4	1166	3053	1279	62	91
Suspicion	27	Male																	0				
		Female																	0				
GRAND TOTAL			543	525	568	508	509	483	498	2048	1612	1273	1217	1186	778	383	178	124	12433	8930	3019	161	323

AGE, SEX, AND RACE OF PERSONS CHARGED

May 2010

18 Years of age and under

(Count all Offences even if the Arrest is based on only one charge)

CLASSIFICATION OF OFFENSES									RACE				
									White	Black	American Indian or Alaskan Native	Asian or Pacific Islander	
		SEX	Under 10	10-12	13-14	15	16	17	Total Under 18				
Murder and Nonnegligent Manslaughter	01a	Male							0				
		Female							0				
Manslaughter by Negligence	01b	Male							0				
		Female							0				
Forcible Rape	02	Male			3				3				
		Female							0	1	2		
Robbery	03	Male			6	2	11	5	24				
		Female				4	4	1	9	15	15	2	1
Aggravated Assault (Return A-4a-d)	04	Male		4	11	6	6	9	36				
		Female			4	2	1	2	9	32	11	1	1
Burglary--Breaking or Entering	05	Male		6	16	13	9	7	51				
		Female		2	1	5		2	10	44	15		2
Larceny--Theft (except Motor Vehicle Theft)	06	Male	1	6	49	43	45	40	184				
		Female	1	8	32	29	41	34	145	224	80	6	19
Motor Vehicle Theft	07	Male				1	5	3	9				
		Female							0	8	1		
Other Assaults (Return A-4e)	08	Male	2	16	44	30	21	35	148				
		Female		3	29	18	20	7	77	178	40		7
Arson	09	Male			2	1	1		4				
		Female			3				3	6			1
Forgery & Counterfeiting	10	Male							0				
		Female							0				
Fraud	11	Male						1	1				
		Female		1	2				3	4			
Embezzlement	12	Male							0				
		Female							0				
Stolen Property; Buying, Receiving, Possessing	13	Male		1	7	4	4	7	23				
		Female			7	1	2	1	11	28	6		
Vandalism	14	Male	3	13	44	25	17	16	118				
		Female		2	7	2	2	2	15	99	30		4
Weapons; Carrying, Possessing, etc.	15	Male		2	8	7	5	3	25				
		Female		1	2	1			4	23	5	1	
Prostitution and Commercialized Vice	16	Male							0				
		Female			1	1	2	1	5	2	3		
Sex Offenses (except Forcible Rape and Prostitution)	17	Male		7	2	1	3	4	17				
		Female							0	13	4		
Drug Abuse Violations	18	Male	0	5	47	35	46	36	169				
Grand Total		Female	0	3	7	8	9	7	34	158	43	0	2
(1) Sale/Manufacturing Subtotal	180	Male	0	0	11	4	6	6	27				
		Female	0	1	2	6	1	0	10	32	5	0	0
Opium or Cocaine and Their Derivatives (Morphine, Heroin, Codeine)	a	Male					1	1	2				
		Female				1			1	3			
Marijuana	b	Male			8	3	4	2	17				
		Female		1	1	2	1		5	18	4		
Synthetic Narcotics-Manufactured Narcotics Which Cause True Drug Addiction (Dem	c	Male			1			2	3				
		Female			1				1	4			
Other Dangerous Non-Narcotic Drugs (Barbiturates, Benzedrine)	d	Male			2	1	1	1	5				
		Female				3			3	7	1		
(2) Possession - Subtotal	185	Male	0	5	36	31	40	30	142				
		Female	0	2	5	2	8	7	24	126	38	0	2
Opium or Cocaine and Their Derivatives (Morphine, Heroin, Codeine)	e	Male				1	3		4				
		Female					1		1	4	1		
Marijuana	f	Male		5	34	28	36	26	129				
		Female		2	5	2	7	5	21	114	35		1
Synthetic Narcotics-Manufactured Narcotics Which Cause True Drug Addiction (Dem	g	Male			1		1	2	4				
		Female						2	2	4	1		1
Other Dangerous Non-Narcotic Drugs (Barbiturates, Benzedrine)	h	Male			1	2		2	5				
		Female							0	4	1		

CLASSIFICATION OF OFFENSES		SEX	Under 10	10-12	13-14	15	16	17	Total Under 18	RACE			
										White	Black	American Indian or Alaskan Native	Asian or Pacific Islander
		Male	0	0	0	0	0	0	0				
Gambling Total	19	Female	0	0	0	0	0	0	0	0	0	0	0
Bookmaking		Male							0				
(Horses and Sports Book)	a	Female							0				
Numbers and Lottery		Male							0				
	b	Female							0				
All Other Gambling		Male							0				
	c	Female							0				
Offenses Against Family and Children	20	Male		1			1		2				
		Female			1	1		1	3	4	1		
Driving Under the Influence	21	Male						7	7				
		Female						1	1	4	3		1
Liquor Laws	22	Male			5	19	27	40	91				
		Female		1	12	9	20	20	62	138	9	6	
Drunkeness	23	Male					1	1	2				
		Female					2	1	3	4			1
Disorderly Conduct	24	Male	1	5	16	14	17	10	63				
		Female		1	11	3	10	5	30	56	37		
Vagrancy	25	Male					2	1	3				
		Female							0	2	1		
All Other Offenses (except Traffic) Total	26	Male	1	21	73	80	77	85	337				
		Female		10	33	36	36	22	137	364	99	4	7
Suspicion	27	Male							0				
		Female							0				
Curfew and Loitering Law Violatic	28	Male		2	19	27	47	62	157				
		Female		2	14	16	22	25	79	182	48		6
Runaway	29	Male		2	9	12	3	4	30				
		Female		2	7	21	5	7	42	57	12		3
GRAND TOTAL			9	127	534	477	524	515	2186	1646	465	20	55



Nevada UCR *Footnotes / Exceptions

May 2010

Table 1

--Nevada figures are annualized projections.

--"Assault" does not include simple assaults to allow direct comparison between the Nevada rate and the National rate for this Index offense. See Table 8 for a count of all assaults.

Table 2

--The LV Fire Department reports "Arson" offenses for the City of Las Vegas. The population figure for this agency represents jurisdiction and is not added to the county total. Similarly, the School District Police Departments in Clark and Washoe Counties are not added to county population estimates as they represent persons served (student enrollment plus staff.)

--Assault data in this table includes ALL assaults (aggravated and simple) reported for the current month.

--County crime rates are calculated following subtraction of populations of jurisdictions failing to report.

Table 3

-- In the "Nevada vs National Index Crime and Clearance Rates" sections, the "Assaults" numbers do not include simple assaults following FBI guidelines. Therefore, they may be compared directly to National rates.

-- National crime rate figures are the latest available for comparative use (2005). Nevada figures are annualized projections.

Table 13

--At various times, property values recovered will exceed values stolen for the current reporting period.

General Notes:

The following agencies were unable to submit reports for this month:

-- Any late reports not submitted in time for this publication will be incorporated in to the year-to-date totals in subsequent reports.