



UNIFORM CRIME REPORTING PROGRAM

UCR STATISTICAL DATA VERIFICATION FORM

As an agency administrator or designee for the _____, I have
(Name of Agency)
reviewed the UCR monthly statistics for **August 2010** which includes all UCR data submitted
year to date. Based upon my or my designee's review and validation of same, I find that:

All data contained in the report for my agency is accurate and complete and may be
released and made part of UCR publications for future distribution to the public and other
interested UCR data subscribers.

Data contained in the report is inaccurate or incomplete and may not be published or
released at this time. (If this choice is selected, please provide the reason in the space
provided below.)

Reason: _____

The corrected data will be supplied to the UCR Program by: _____.
(Date)

This document must be signed and mailed to the Uniform Crime Reporting Program, 333 W.
Nye Lane Ste 100, Carson City, Nevada 89706 or faxed to (775) 684-6268 by **February 2,**
2011.

Signature of Agency Administrator (or designee)

Name/Title of Agency Administrator (print or type)

Agency's Name/Location

Date



Monthly Report



**August
2010**



Disclaimer: The following information is preliminary and cannot be certified until it is published in the annual report, *Crime in Nevada*, which will be available after July 1, 2011.



**Jearld Hafen, Director
Department of Public Safety**

**Pat Conmay, Division Chief
Records and Identification Bureau**

**Nicole Davis, Administrative Assistant IV
Sherri Sharp, Administrative Assistant II**

**Prepared by:
Records and Identification Bureau
Uniform Crime Reporting
333 W. Nye Lane Ste 100
Carson City, Nevada 89706
(775) 684-6262**



Nevada UCR Definitions / Explanations

Uniform Crime Reporting Program

The UCR program is a nationwide, cooperative, statistical effort by over 17,000 cities, county and state law enforcement agencies that voluntarily report data on crimes brought to their attention. Law enforcement agencies active in the national program represent 95% of the total population of the United States. While the program's primary objective is to generate a reliable set of crime statistics for use in law enforcement administration, operation and management, its data has over the years become one of the country's leading social indicators.

In Nevada, 40 agencies are currently reporting UCR data to the statewide program representing nearly 99% of its population. Rather than submitting directly to the FBI, local agencies must submit crime data to the state UCR Repository, which compiles, analyzes and submits copies of the reports to the FBI. The Nevada UCR Program prides itself on its responsiveness to local contributing agencies that previously received limited feedback for their efforts. The Nevada program is also responsible for producing and distributing periodic reports of the information contained in its database. As its database has grown, the program's utility has become even more apparent.

Eight offenses serve as an index for gauging fluctuations in overall volumes and rates of crime. Known collectively as the "Crime Index," these offenses include *the violent crimes of murder, rape, robbery and assault and the property crimes of burglary, larceny, motor vehicle theft and arson*. These offenses were selected as a grouped measuring device because they represent the most common crime problems. They are all serious crimes; either by their very nature or due to the volume and frequency with which they occur.

Index Crimes Definitions

Murder and Non-negligent Manslaughter

Murder and non negligent manslaughter, as defined in the Uniform Crime Reporting Program, is the willful (non-negligent) killing of a human being by another.

The classification of this offense, as for all other Crime Index offenses, is based solely on police investigation as opposed to the determination of a court, medical examiner, coroner, jury or other judicial entity. Not included in the count for this offense classification are deaths caused by negligence, suicide or accident, justifiable homicides and attempts to murder or assaults to murder. These are scored as aggravated assaults.

Nevada UCR Definitions / Explanations

Forcible Rape

Forcible rape, as defined in the program, is the carnal knowledge of a female forcibly and against her will. Assaults or attempts to commit rape by force or threat of force are also included; however, statutory rape (without force) and other sex offenses are excluded.

Robbery

Robbery is the taking or attempting to take anything of value from the care, custody or control of a person or persons by force or threat of force or violence and/or by putting the victim in fear.

Aggravated Assault

Aggravated assault is an unlawful attack by one person upon another for the purpose of inflicting severe or aggravated bodily injury. This type of assault is usually accompanied by the use of a weapon or by means likely to produce death or great bodily harm. Attempts are included since it is not necessary that an injury result when a gun, knife or other weapon is used which could and probably would result in serious personal injury if the crime were successfully completed

Burglary

The Uniform Crime Reporting Program defines burglary as the unlawful entry of a structure to commit a felony or theft. The use of force to gain entry is not required to classify an offense as burglary. Burglary in this program is categorized into three sub classifications: forcible entry, unlawful entry where no force is used and attempted forcible entry.

Larceny-Theft

Larceny-theft is the unlawful taking, carrying, leading, or riding away of property from the possession or constructive possession of another. It includes crimes such as shoplifting, pocket picking, purse-snatching, thefts from motor vehicles, thefts of motor vehicle parts and accessories, and bicycle thefts, etc., in which no use of force, violence, or fraud occurs. In the UCR Program, this crime category does not include embezzlement, "con" games, forgery, and worthless checks. Motor vehicle theft is also excluded from this category inasmuch as it is a separate Crime Index offense.

Motor Vehicle Theft

Defined as the theft or attempted theft of a motor vehicle, this offense category includes the stealing of automobiles, trucks, buses, motorcycles, motor scooters, snowmobiles, etc. The definition excludes the taking of a motor vehicle for temporary use by those persons having lawful access.

Nevada UCR

Definitions / Explanations

Arson

Arson is defined by the Uniform Crime Reporting Program as any willful or malicious burning or attempt to burn, with or without intent to defraud, a dwelling house, public building, a motor vehicle or aircraft, personal property of another, etc. Only fires determined through investigation to have been willfully or maliciously set are classified as arsons. Fires of suspicious or unknown origins are excluded.

Population Estimates

State, county and incorporated city population estimates are prepared and reviewed prior to the end of each calendar year for certification by the governor by March 1. The Nevada Department of Taxation and Nevada State Demographer, Bureau of Business and Economic Research, College of Business Administration, University of Nevada, Reno, prepares these estimates.

Crime Rates

Crime rates involve the number of Index Crimes per unit of population, usually per 100,000 persons. Because Nevada has such a low population, a rate per 1,000 persons is used to reflect a more realistic volume. No attempt is made to incorporate transient populations or other factors that contribute to the ratio and types of crime in given areas. Any effort to make comparisons of crime rates between areas should be tempered by these population and environmental variables.

Crime rates are one of the most meaningful statistical elements. Computation of crime rates per 1,000 population is achieved by dividing the community's population by 1,000, then dividing the number of offenses in each class by that number. The answer is the number of offenses per 1,000 population and is the crime rate for that particular offense. In Table 2, the County Total Crime Rate is computed after subtracting the population figure for all non-reporting agencies for the current month.

The index offense "Aggravated Assault" is an item of special interest to users of Nevada's UCR report. In Tables 1 & 3, where Nevada and National crime rates are compared, "simple assaults" are subtracted from the total of all assaults following FBI UCR rules, thus allowing for direct comparison. However, total assaults (simple and aggravated) are also presented in the Nevada report. This is because the Nevada UCR staff believes this figure is an important indicator of risk for citizens and it presents a more balanced picture of this portion of the crime index to law enforcement personnel.

The Federal Bureau of Investigation, Uniform Crime Reporting Section, publishes national rates.

Clearance Rates

The percentage of crimes cleared is obtained by dividing the number of offenses cleared by the number of offenses known. This number is then multiplied by 100.

Nevada--Statewide Summary--UCR

Index Crimes

August 2010

Offense	Crimes this Month	# Cleared this Month	% Cleared this Month	Crimes this YTD	# Cleared this YTD	% Cleared this YTD	August Crimes 2009	August Cleared 2009	% August Cleared 2009	2009 NV Rate / 1,000 (Proj) *	2008 NV Rate / 1,000	2008 Natl. Rate / 1,000
Murder	15	12	80	107	88	82	15	14	93	0.06	0.09	0.05
Rape	99	25	25	668	170	25	88	14	16	0.37	0.41	0.29
Robbery	476	130	27	3,539	1,039	29	497	129	26	1.96	2.39	1.45
Assault *	995	514	52	7,745	3,936	51	1,072	589	55	4.30	4.11	2.75
Burglary	1,894	193	10	14,149	1,503	11	1,835	228	12	7.85	8.94	7.31
Larceny	3,528	989	28	28,423	8,894	31	3,948	1,061	27	15.77	18.34	21.67
MV Theft	1,045	118	11	6,630	593	9	1,048	106	10	3.68	5.88	3.15
Arson	41	4	10	300	66	22	48	8	17	0.17	0.24	0.24
Total	8,093	1,985	25	61,561	16,289	26	8,551	2,149	25	34.16	40.40	36.91

* The projected Crime Rate for Assaults is computed after subtracting Simple Assaults from the total for all Assaults following FBI guidelines. Therefore, this rate may be compared directly to the National Rate. See Table 3 and the "Footnotes/Exceptions page for further information.

Nevada UCR - - Monthly Crime/ Clearance Summary - - All Crimes

Contributing Agency	Est. Pop	Murder		Rape		Robbery		Assault		Burglary		Larceny		MV Theft		Arson		Total Crimes	Crime Rate	Clearances	Clearance Rate
Carson County																		August 2010			
Carson SO	57,723	0	0	0	0	3	1	72	43	22	12	66	22	6	2	1	0	170	2.95	80	47.1%
County Total	57,723	0	0	0	0	3	1	72	43	22	12	66	22	6	2	1	0	170	2.95	80	47.1%
Churchill County																					
Churchill SO	18,738	0	0	2	1	0	0	18	6	28	1	8	2	2	0	0	0	58	3.10	10	17.2%
Fallon PD	8,452	0	0	0	0	2	0	15	11	16	1	17	3	1	1	0	0	51	6.03	16	31.4%
County Total	27,190	0	0	2	1	2	0	33	17	44	2	25	5	3	1	0	0	109	4.01	26	23.9%
Clark County																					
Boulder PD	15,863	0	0	0	0	0	0	7	4	3	0	5	0	2	0	0	0	17	1.07	4	23.5%
Clark Co. Schools PD*	313,600	0	0	0	0	0	0	3	1	7	4	20	1	1	0	2	0	33	0.11	6	18.2%
Henderson	260,161	0	0	5	2	7	2	232	167	102	13	275	87	43	1	5	0	669	2.57	272	40.7%
LV Metro PD	1,449,036	11	8	73	11	354	101	2,833	1,348	1,208	70	1,886	561	746	43	14	0	7,125	4.92	2,142	30.1%
LV Fire Dept*																8	1	8	N/A	1	12.5%
Mesquite	18,787	0	0	0	0	2	1	8	9	5	1	19	7	1	0	0	0	35	1.86	18	51.4%
North Las Vegas PD	210,472	0	0	6	2	46	10	275	189	141	8	274	42	70	5	1	1	813	3.86	257	31.6%
Taxicab Authority		0	0	0	0	0	0	5	3	0	0	58	28	0	0	0	0	63	0.00	31	49.2%
UNLV PD*	30,850	0	0	0	0	1	0	1	0	6	1	11	0	1	0	0	0	20	0.65	1	5.0%
County Total	1,954,319	11	8	84	15	410	114	3,364	1,721	1,472	97	2,548	726	864	49	30	2	8,783	4.49	2,732	31.1%
Douglas County																					
Douglas SO	52,386	0	0	-1	0	0	0	54	36	19	5	62	14	3	0	1	0	138	2.63	55	39.9%
County Total	52,386	0	0	-1	0	0	0	54	36	19	5	62	14	3	0	1	0	138	2.63	55	39.9%

*Population figure not included in county total
Table 2

Nevada UCR - - Monthly Crime/ Clearance Summary - - All Crimes

Contributing Agency	Est. Pop	Murder		Rape		Robbery		Assault		Burglary		Larceny		MV Theft		Arson		Total Crimes	Crime Rate	Clearances	Clearance Rate
Elko County		August 2010																			
Elko SO	23,004	0	0	0	0	0	0	1	1	-1	0	2	2	1	1	0	0	3	0.13	4	133.3%
Carlin PD	2,281	0	0	0	0	0	0	3	3	1	1	1	1	0	0	0	0	5	2.19	5	100.0%
Elko PD	18,183	0	0	1	1	1	0	28	8	14	0	26	6	3	0	0	0	73	4.01	15	20.5%
WestWendover PD	4,871	0	0	0	0	1	0	11	4	3	0	5	0	1	0	1	0	22	4.52	4	18.2%
County Total	48,339	0	0	1	1	2	0	43	16	17	1	34	9	5	1	1	0	103	2.13	28	27.2%
Esmeralda County																					
Esmeralda SO	1,262	0	0	0	0	0	0	0	0	0	0	0	0	0	0	0	0	0	0.00	0	0.0%
County Total	1,262	0	0	0	0	0	0	0	0	0	0	0	0	0	0	0	0	0	0.00	0	0.0%
Eureka County																					
Eureka SO	1,460	0	0	0	0	0	0	2	2	2	0	0	0	0	0	0	0	4	2.74	2	50.0%
County Total	1,460	0	0	0	0	0	0	2	2	2	0	0	0	0	0	0	0	4	2.74	2	50.0%
Humboldt County																					
Humboldt SO	10,108	0	0	0	0	0	0	5	3	0	0	3	0	4	3	0	0	12	1.19	6	50.0%
Winnemucca PD	7,643	0	0	0	0	0	0	17	17	1	1	7	2	0	0	0	0	25	3.27	20	
County Total	17,751	0	0	0	0	0	0	22	20	1	1	10	2	4	3	0	0	37	2.08	26	70.3%

Nevada UCR - - Monthly Crime/ Clearance Summary - - All Crimes

Contributing Agency	Est. Pop	Murder		Rape		Robbery		Assault		Burglary		Larceny		MV Theft		Arson		Total Crimes	Crime Rate	Clearances	Clearance Rate
Lander County																		August 2010			
Lander SO	5,655	0	0	1	1	0	0	13	13	3	3	3	1	2	2	0	0	22	3.89	20	90.9%
County Total	5,655	0	0	1	1	0	0	13	13	3	3	3	1	2	2	0	0	22	3.89	20	90.9%
Lincoln County																					
Lincoln SO	3,987	0	0	0	0	0	0	5	1	0	0	0	2	1	0	0	0	6	1.50	3	50.0%
County Total	3,987	0	0	0	0	0	0	5	1	0	0	0	2	1	0	0	0	6	1.50	3	50.0%
Lyon County																					
Lyon SO	50,774	0	0	0	0	1	0	53	50	20	5	48	9	8	3	0	0	130	2.56	67	51.5%
Yerington PD	3,257	0	0	0	0	0	0	6	0	0	0	0	0	1	0	0	0	7	2.15	0	0.0%
County Total	54,031	0	0	0	0	1	0	59	50	20	5	48	9	9	3	0	0	137	2.54	67	48.9%
Mineral County																					
Mineral SO	4,399	0	0	0	0	0	0	3	3	1	0	0	0	0	0	0	0	4	0.91	3	75.0%
County Total	4,399	0	0	0	0	0	0	3	3	1	0	0	0	0	0	0	0	4	0.91	3	75.0%
Nye County																					
Nye SO	44,795	0	0	2	1	5	6	65	38	44	3	46	7	9	2	1	0	172	3.84	57	33.1%
County Total	44,795	0	0	2	1	5	6	65	38	44	3	46	7	9	2	1	0	172	3.84	57	33.1%

Nevada UCR - - Monthly Crime/ Clearance Summary - - All Crimes

Contributing Agency	Est. Pop	Murder		Rape		Robbery		Assault		Burglary		Larceny		MV Theft		Arson		Total Crimes	Crime Rate	Clearances	Clearance Rate
Pershing County		August 2010																			
Pershing SO	4,528	0	0	1	0	0	0	2	1	3	0	6	0	0	0	0	0	12	2.65	1	8.3%
Lovelock PD	2,427	0	0	0	0	0	0	2	2	2	1	5	3	1	0	0	0	10	4.12	6	60.0%
County Total	6,955	0	0	1	0	0	0	4	3	5	1	11	3	1	0	0	0	22	3.16	7	31.8%
Storey County																					
Storey	4,110	0	0	0	0	0	0	4	2	0	0	0	0	0	0	0	0	4	0.97	2	50.0%
County Total	4,110	0	0	0	0	0	0	4	2	0	0	0	0	0	0	0	0	4	0.97	2	50.0%
Washoe County																					
Washoe SO	106,868	1	1	1	0	0	0	74	60	32	8	53	7	48	44	0	0	209	1.96	120	57.4%
Reno PD	214,371	2	3	6	4	39	8	334	198	146	21	429	138	66	7	3	0	1,025	4.78	379	37.0%
Sparks PD	87,846	1	0	2	2	14	1	125	83	50	26	153	42	23	4	0	0	368	4.19	158	42.9%
UNR PD*	16,671	0	0	0	0	0	0	0	0	5	2	24	1	0	0	0	0	29	1.74	3	10.3%
Washoe Co Schl PD*	68,366	0	0	0	0	0	0	1	1	2	0	7	0	0	0	0	0	10	0.15	1	10.0%
TMCC PD*	15,260	0	0	0	0	0	0	0	0	0	0	0	0	0	0	0	0	0	0.00	0	0.0%
County Total	409,085	4	4	9	6	53	9	534	342	235	57	666	188	137	55	3	0	1,641	4.01	661	40.3%
White Pine County																					
White Pine SO	9,542	0	0	0	0	0	0	5	5	9	6	9	1	1	0	4	2	28	2.93	14	50.0%
County Total	9,542	0	0	0	0	0	0	5	5	9	6	9	1	1	0	4	2	28	2.93	14	50.0%
Grand Total	2,702,989	15	12	99	25	476	130	4,282	2,312	1,894	193	3,528	989	1,045	118	41	4	11,380	4.21	3,783	33.2%

*Population figure not included in county total
Table 2

Nevada UCR - - Monthly Crimes/Clearances Summary - - Index Crimes
August 2010

Est. Pop		Murder		Rape		Robbery		*Assault		Burglary		Larceny		MV Theft		Arson		Total Crimes	Crime Rate	Total Clear	Clearance Rate
Statewide Totals																					
(Crimes/Clearances)	2,702,989	15	12	99	25	476	130	995	514	1894	193	3528	989	1045	118	41	4	8093	2.99	1985	24.53

Nevada (Projected 2010) vs National (2008) Index Crime Rates

(per 1,000 population)

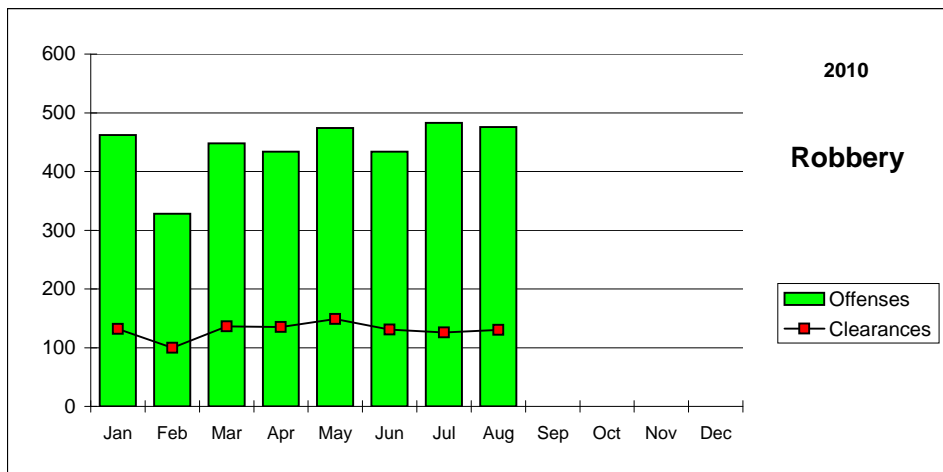
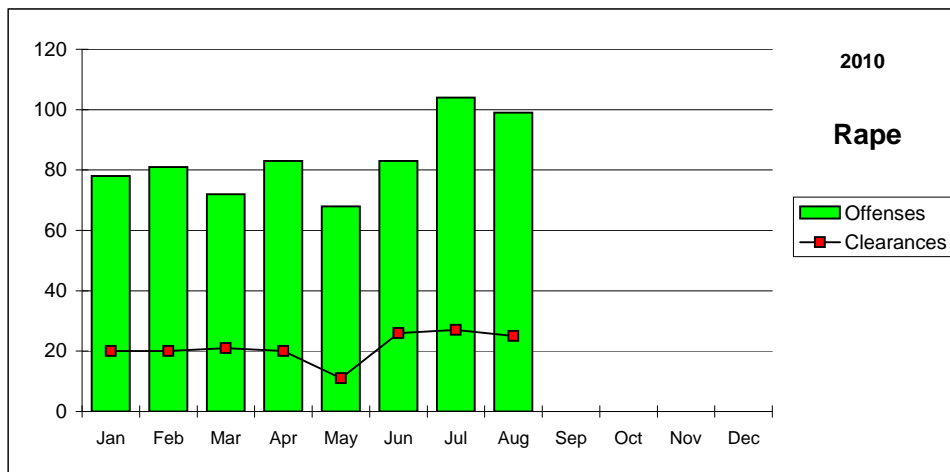
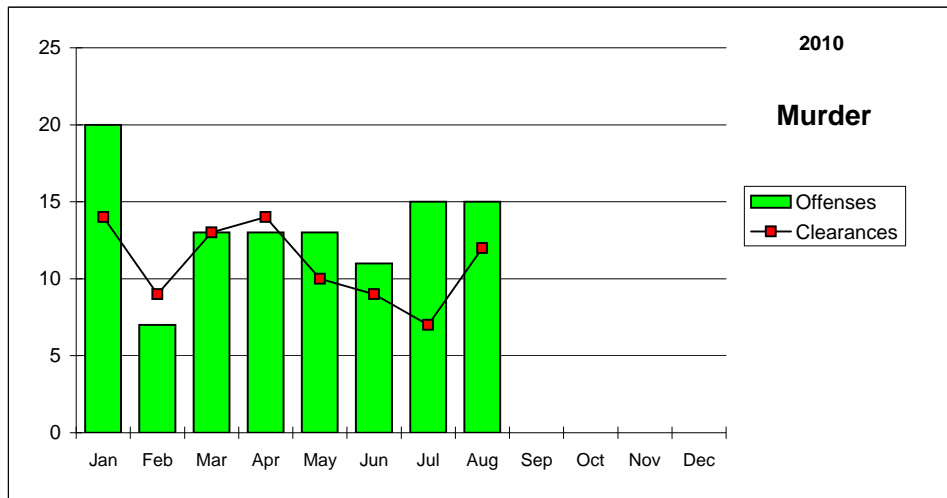
	Murder	Rape	Robbery	Assault	Burglary	Larceny	MV Theft	**Arson	Crime Rate
Nevada	0.06	0.37	1.96	4.30	7.85	15.77	3.68	0.17	34.16
National	0.05	0.29	1.45	2.75	7.31	21.67	3.15	0.24	36.91

Nevada (Projected 2010) vs National (2008) Crime Clearance Rates

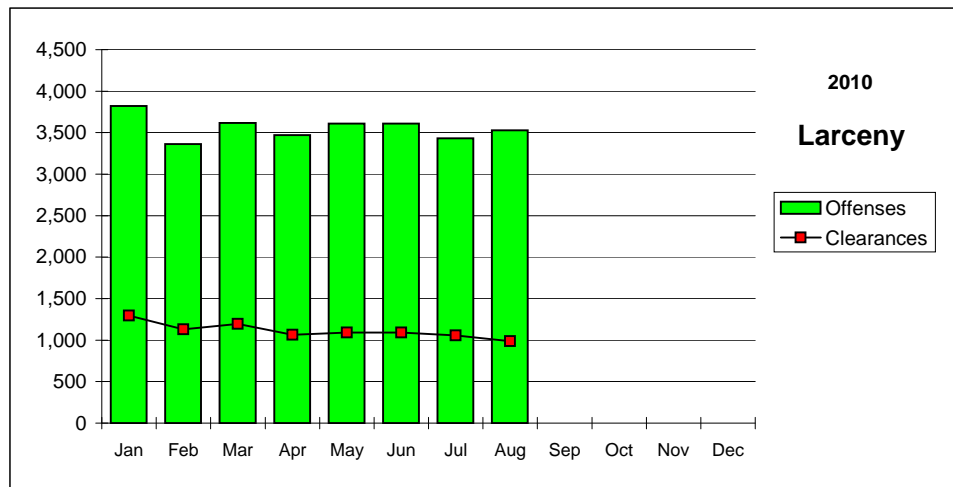
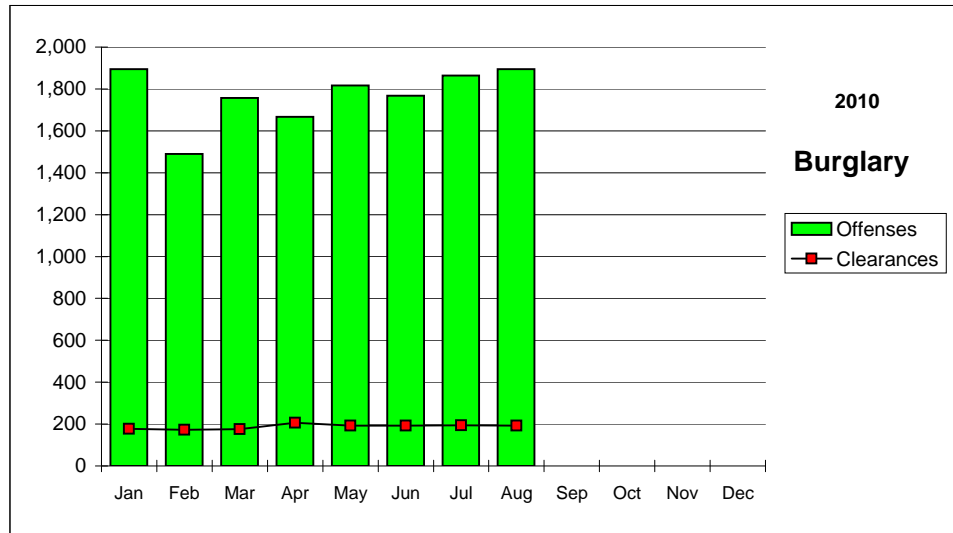
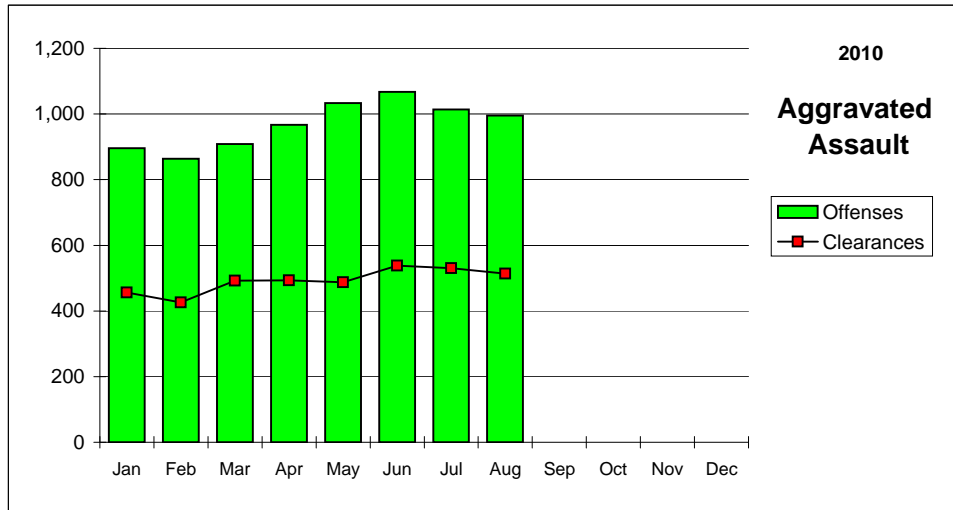
(by Percent)

	Murder	Rape	Robbery	Assault	Burglary	Larceny	MV Theft	Arson	Clear Rate
Nevada	82.2	25.4	29.4	50.8	10.6	31.3	8.9	22.0	24.5
National	63.6	40.4	26.8	54.9	12.5	19.9	12.0	17.8	31.0

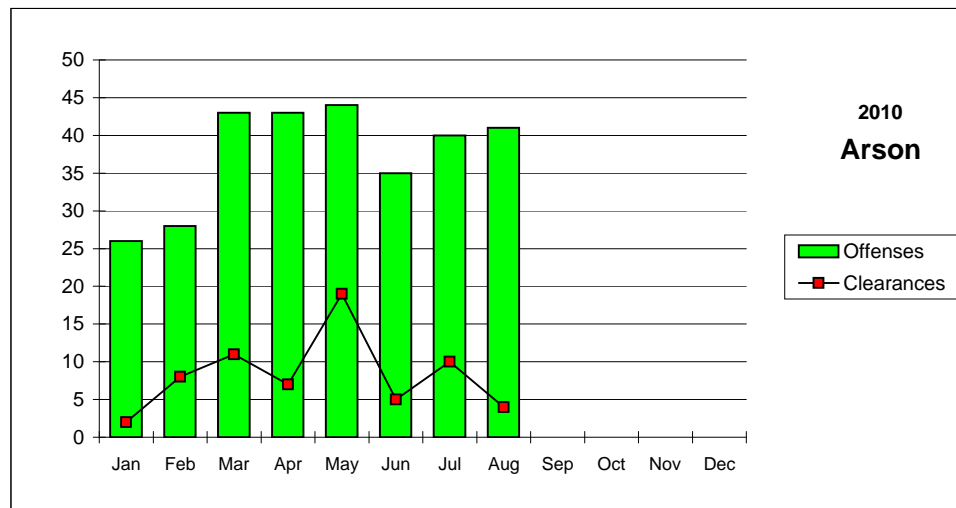
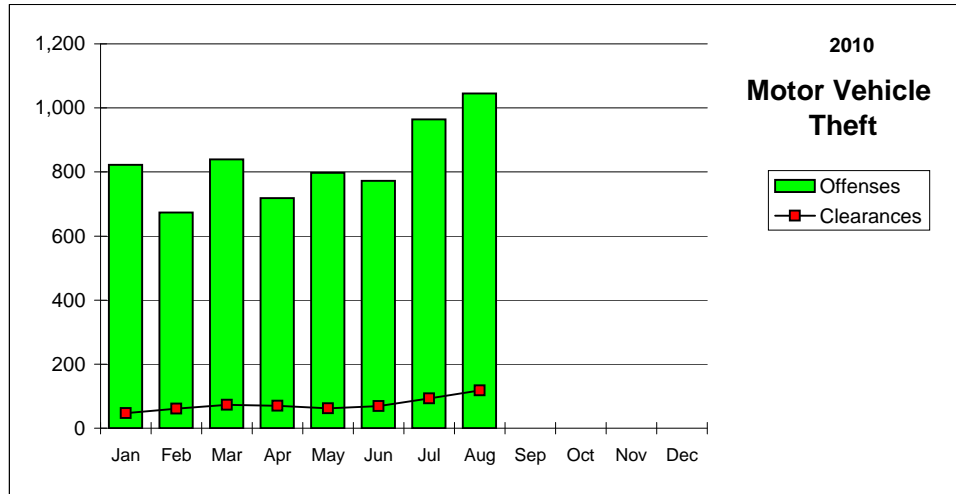
Nevada--Graphic Summary--UCR



Nevada--Graphic Summary--UCR



Nevada--Graphic Summary--UCR



Nevada--Murder--Incidence Level Variation--UCR

August 2010

Agency	August 2010 Offenses	August 2010 Cleared	2010 YTD Offenses	2010 YTD Cleared	August 2009 Offenses	August 2009 Cleared	2009 YTD Offenses	2009 YTD Cleared
Boulder	0	0	0	0	0	0	1	0
Carlin PD	0	0	0	0	0	0	0	0
Carson SO	0	0	0	0	0	0	0	0
Churchill SO	0	0	0	0	0	0	0	0
Clark Co Schl PD	0	0	0	0	0	0	0	0
Douglas SO	0	0	0	1	0	0	1	1
Elko PD	0	0	0	0	0	0	0	0
Elko SO	0	0	0	0	0	0	0	0
Esmeralda SO	0	0	0	0	0	0	0	0
Eureka SO	0	0	0	0	0	0	0	0
Fallon PD	0	0	0	0	0	0	0	0
Henderson PD	0	0	2	3	2	2	3	4
Humboldt SO	0	0	1	1	0	0	0	0
Lander SO	0	0	0	0	0	0	0	0
Lincoln SO	0	0	0	0	0	0	0	2
Lovelock PD	0	0	0	0	0	0	0	0
LV Fire Dept	0	0	0	0	0	0	0	0
LV Metro	11	8	80	62	9	7	78	60
Lyon SO	0	0	0	0	0	0	0	0
Mesquite PD	0	0	0	0	0	0	0	0
Mineral SO	0	0	0	0	0	0	0	0
NLVPD	0	0	10	8	1	1	13	7
Nye SO	0	0	3	2	0	0	2	2
Pershing SO	0	0	0	0	0	0	0	0
Reno PD	2	3	8	8	1	2	8	8
Sparks PD	1	0	2	2	1	1	3	3
Storey SO	0	0	0	0	0	0	0	0
Taxicab Authority	0	0	0	0	0	0	0	0
TMCC PD	0	0	0	0	0	0	0	0
UNLV PD	0	0	0	0	0	0	0	0
UNR PD	0	0	0	0	0	0	0	0
Washoe SO	1	1	1	1	1	1	4	4
Washoe Co Schl PD	0	0	0	0	0	0	0	0
Wendover PD	0	0	0	0	0	0	0	0
White Pine SO	0	0	0	0	0	0	1	0
Winnemucca PD	0	0	0	0	0	0	0	0
Yerington PD	0	0	0	0	0	0	0	0
TOTALS	15	12	107	88	15	14	114	91

Nevada--Rape--Incidence Level Variation--UCR

August 2010

Agency	August 2010 Offenses	August 2010 Cleared	2010 YTD Offenses	2010 YTD Cleared	August 2009 Offenses	August 2009 Cleared	2009 YTD Offenses	2009 YTD Cleared
Boulder	0	0	1	0	0	0	0	0
Carlin PD	0	0	0	0	0	0	0	0
Carson SO	0	0	1	0	0	0	1	0
Churchill SO	2	1	6	6	0	0	4	2
Clark Co Schl PD	0	0	1	0	0	0	4	0
Douglas SO	-1	0	3	2	1	0	7	1
Elko PD	1	1	13	3	0	0	15	0
Elko SO	0	0	0	0	0	0	3	1
Esmeralda SO	0	0	0	0	0	0	0	0
Eureka SO	0	0	0	0	0	0	1	1
Fallon PD	0	0	1	0	0	0	1	0
Henderson PD	5	2	21	15	6	1	41	21
Humboldt SO	0	0	0	0	0	0	0	0
Lander SO	1	1	9	9	0	0	5	2
Lincoln SO	0	0	0	0	0	0	0	0
Lovelock PD	0	0	1	0	0	0	1	0
LV Fire Dept	0	0	0	0	0	0	0	0
LV Metro	73	11	462	80	65	10	484	88
Lyon SO	0	0	3	2	0	0	1	1
Mesquite PD	0	0	1	0	0	0	0	1
Mineral SO	0	0	0	0	0	0	0	0
NLVPD	6	2	41	12	6	2	33	13
Nye SO	2	1	12	3	0	0	9	9
Pershing SO	1	0	2	0	0	0	2	0
Reno PD	6	4	38	15	8	1	59	10
Sparks PD	2	2	28	20	2	0	29	16
Storey SO	0	0	0	0	0	0	0	0
Taxicab Authority	0	0	0	0	0	0	0	0
TMCC PD	0	0	0	0	0	0	0	0
UNLV PD	0	0	0	0	0	0	1	0
UNR PD	0	0	0	0	0	0	0	0
Washoe SO	1	0	18	3	0	0	0	0
Washoe Co Schl PD	0	0	0	0	0	0	0	0
Wendover PD	0	0	3	0	0	0	6	0
White Pine SO	0	0	3	0	0	0	1	1
Winnemucca PD	0	0	0	0	0	0	1	0
Yerington PD	0	0	0	0	0	0	0	0
TOTALS	99	25	668	170	88	14	709	167

Nevada--Robbery--Incidence Level Variation--UCR

August 2010

Agency	August 2010 Offenses	August 2010 Cleared	2010 YTD Offenses	2010 YTD Cleared	August 2009 Offenses	August 2009 Cleared	2009 YTD Offenses	2009 YTD Cleared
Boulder	0	0	1	1	0	0	1	0
Carlin PD	0	0	0	0	0	0	0	0
Carson SO	3	1	15	8	2	1	17	13
Churchill SO	0	0	0	0	0	0	0	0
Clark Co Schl PD	0	0	25	14	1	1	30	15
Douglas SO	0	0	3	2	0	0	6	3
Elko PD	1	0	10	6	0	0	6	3
Elko SO	0	0	0	0	0	0	1	0
Esmeralda SO	0	0	0	0	0	0	0	0
Eureka SO	0	0	0	0	0	0	0	0
Fallon PD	2	0	3	0	0	0	1	0
Henderson PD	7	2	136	64	17	7	177	63
Humboldt SO	0	0	0	0	0	0	1	1
Lander SO	0	0	0	0	0	0	0	0
Lincoln SO	0	0	0	0	0	0	0	0
Lovelock PD	0	0	0	0	0	0	0	0
LV Fire Dept	0	0	0	0	0	0	0	0
LV Metro	354	101	2,652	743	392	85	3,125	803
Lyon SO	1	0	7	2	0	0	5	2
Mesquite PD	2	1	5	3	1	0	4	2
Mineral SO	0	0	0	0	0	0	0	0
NLVPD	46	10	287	80	43	12	405	113
Nye SO	5	6	26	13	2	2	15	11
Pershing SO	0	0	0	0	0	0	0	0
Reno PD	39	8	279	74	26	13	256	80
Sparks PD	14	1	70	25	11	8	84	35
Storey SO	0	0	0	0	0	0	0	0
Taxicab Authority	0	0	0	0	0	0	0	0
TMCC PD	0	0	0	0	1	0	1	0
UNLV PD	1	0	6	0	0	0	1	0
UNR PD	0	0	0	0	0	0	0	0
Washoe SO	0	0	10	3	1	0	8	2
Washoe Co Schl PD	0	0	0	0	0	0	1	1
Wendover PD	1	0	2	0	0	0	2	0
White Pine SO	0	0	1	1	0	0	1	1
Winnemucca PD	0	0	1	0	0	0	2	1
Yerington PD	0	0	0	0	0	0	0	0
TOTALS	476	130	3,539	1,039	497	129	4,150	1,149

Nevada--Aggravated Assault--Incidence Level Variation--UCR

August 2010

Agency	August 2010 Offenses	August 2010 Cleared	2010 YTD Offenses	2010 YTD Cleared	August 2009 Offenses	August 2009 Cleared	2009 YTD Offenses	2009 YTD Cleared
Boulder	2	0	10	8	3	1	7	2
Carlin PD	1	1	3	3	0	0	8	8
Carson SO	9	9	100	84	10	3	113	68
Churchill SO	9	2	29	20	2	1	16	13
Clark Co Schl PD	0	0	19	15	0	0	17	11
Douglas SO	6	4	40	25	24	13	58	35
Elko PD	2	1	21	16	10	8	43	25
Elko SO	0	0	4	4	3	3	13	6
Esmeralda SO	0	0	0	0	1	1	4	3
Eureka SO	2	2	7	4	1	1	6	6
Fallon PD	0	0	14	12	1	0	18	11
Henderson PD	24	16	222	159	36	19	187	110
Humboldt SO	3	2	35	28	4	4	32	29
Lander SO	3	3	20	18	1	1	12	9
Lincoln SO	0	0	4	3	0	0	1	1
Lovelock PD	1	1	7	4	0	0	6	3
LV Fire Dept	0	0	0	0	0	0	0	0
LV Metro	730	340	5,401	2,434	729	366	5,265	2,448
Lyon SO	11	11	61	56	15	13	66	62
Mesquite PD	1	3	10	10	0	0	3	1
Mineral SO	2	2	19	19	8	8	25	25
NLVPD	69	48	697	437	76	57	663	421
Nye SO	19	12	181	83	6	5	60	54
Pershing SO	1	1	9	5	2	1	11	5
Reno PD	68	31	483	254	93	53	703	326
Sparks PD	16	13	152	98	26	14	169	92
Storey SO	0	0	2	1	0	0	4	3
Taxicab Authority	0	0	2	2	0	0	1	1
TMCC PD	0	0	0	0	0	0	1	1
UNLV PD	0	0	3	2	0	0	3	2
UNR PD	0	0	9	8	0	0	0	0
Washoe SO	8	7	135	103	16	13	165	114
Washoe Co Schl PD	1	1	3	3	0	0	2	2
Wendover PD	1	1	6	3	0	0	12	2
White Pine SO	2	2	13	7	2	2	8	8
Winnemucca PD	1	1	8	8	2	2	18	12
Yerington PD	3	0	16	0	1	0	7	0
TOTALS	995	514	7,745	3,936	1,072	589	7,727	3,919

Nevada--All Assaults--Incidence Level Variation--UCR

August 2010

Agency	August 2010 Offenses	August 2010 Cleared	2010 YTD Offenses	2010 YTD Cleared	August 2009 Offenses	August 2009 Cleared	2009 YTD Offenses	2009 YTD Cleared
Boulder	7	4	82	67	14	9	59	35
Carlin PD	3	3	17	16	2	2	26	24
Carson SO	72	43	521	326	67	35	518	288
Churchill SO	18	6	126	102	13	12	104	106
Clark Co Schl PD	3	1	413	272	16	1	472	267
Douglas SO	54	36	425	300	73	47	396	282
Elko PD	28	8	218	105	38	24	276	159
Elko SO	1	1	17	16	6	5	23	11
Esmeralda SO	0	0	2	2	1	1	5	4
Eureka SO	2	2	8	5	1	1	9	7
Fallon PD	15	11	170	131	22	14	171	123
Henderson PD	232	167	1,906	1,513	256	166	1,890	1,267
Humboldt SO	5	3	42	33	5	5	37	34
Lander SO	13	13	108	95	16	14	75	65
Lincoln SO	5	1	36	22	2	3	20	16
Lovelock PD	2	2	28	22	2	3	42	34
LV Fire Dept	0	0	0	0	0	0	0	0
LV Metro	2,833	1,348	21,776	10,229	2,664	1,272	20,531	9,629
Lyon SO	53	50	372	351	55	52	384	359
Mesquite PD	8	9	120	100	13	11	109	97
Mineral SO	3	3	30	30	8	8	35	35
NLVPD	275	189	2,230	1,399	290	214	2,281	1,494
Nye SO	65	38	524	286	78	74	493	476
Pershing SO	2	1	13	6	2	1	14	6
Reno PD	334	198	2,377	1,325	416	210	3,090	1,522
Sparks PD	125	83	923	584	124	68	1,048	585
Storey SO	4	2	23	14	6	4	34	23
Taxicab Authority	5	3	30	28	14	1	64	29
TMCC PD	0	0	2	1	1	0	2	1
UNLV PD	1	0	26	18	2	2	19	14
UNR PD	0	0	12	9	0	0	0	0
Washoe SO	74	60	531	406	51	46	516	397
Washoe Co Schl PD	1	1	23	22	0	0	13	13
Wendover PD	11	4	83	37	16	6	98	39
White Pine SO	5	5	45	26	5	5	29	25
Winnemucca PD	17	17	73	73	16	15	98	88
Yerington PD	6	0	40	0	4	0	29	0
TOTALS	4,282	2,312	33,372	17,971	4,299	2,331	33,010	17,554

Nevada--Burglary--Incidence Level Variation--UCR

August 2010

Agency	August 2010 Offenses	August 2010 Cleared	2010 YTD Offenses	2010 YTD Cleared	August 2009 Offenses	August 2009 Cleared	2009 YTD Offenses	2009 YTD Cleared
Boulder	3	0	25	1	3	3	36	5
Carlin PD	1	1	9	4	1	1	14	12
Carson SO	22	12	176	49	30	5	190	44
Churchill SO	28	1	63	9	2	0	35	19
Clark Co Schl PD	7	4	114	35	8	2	122	30
Douglas SO	19	5	128	23	11	2	128	21
Elko PD	14	0	169	10	15	3	104	11
Elko SO	-1	0	18	10	9	2	55	8
Esmeralda SO	0	0	1	0	0	0	0	0
Eureka SO	2	0	5	0	2	0	6	1
Fallon PD	16	1	37	4	6	1	37	12
Henderson PD	102	13	801	141	116	25	907	212
Humboldt SO	0	0	16	4	3	3	15	6
Lander SO	3	3	36	18	8	3	53	20
Lincoln SO	0	0	1	2	0	2	3	3
Lovelock PD	2	1	18	17	2	0	12	9
LV Fire Dept	0	0	0	0	0	0	0	0
LV Metro	1,208	70	8,883	557	1,084	76	8,733	606
Lyon SO	20	5	134	21	22	5	121	20
Mesquite PD	5	1	31	4	3	1	40	8
Mineral SO	1	0	10	5	0	0	6	2
NLVPD	141	8	1,131	87	170	11	1,302	121
Nye SO	44	3	325	34	19	0	169	33
Pershing SO	3	0	11	5	1	0	7	1
Reno PD	146	21	1,101	164	192	44	1,253	209
Sparks PD	50	26	487	206	62	22	569	192
Storey SO	0	0	11	0	0	0	13	2
Taxicab Authority	0	0	2	1	0	0	7	6
TMCC PD	0	0	2	0	0	0	3	1
UNLV PD	6	1	33	4	1	0	23	1
UNR PD	5	2	18	3	0	0	0	0
Washoe SO	32	8	262	60	41	10	308	58
Washoe Co Schl PD	2	0	5	3	2	0	5	0
Wendover PD	3	0	23	6	4	0	44	6
White Pine SO	9	6	28	8	9	6	25	0
Winnemucca PD	1	1	17	8	6	1	48	17
Yerington PD	0	0	18	0	3	0	32	0
TOTALS	1,894	193	14,149	1,503	1,835	228	14,425	1,696

Nevada--Larceny--Incidence Level Variation--UCR

August 2010

Agency	August 2010 Offenses	August 2010 Cleared	2010 YTD Offenses	2010 YTD Cleared	August 2009 Offenses	August 2009 Cleared	2009 YTD Offenses	2009 YTD Cleared
Boulder	5	0	33	4	3	0	39	6
Carlin PD	1	1	12	5	1	1	5	5
Carson SO	66	22	524	160	69	22	528	202
Churchill SO	8	2	53	24	13	3	83	29
Clark Co Schl PD	20	1	465	93	19	0	497	93
Douglas SO	62	14	431	62	39	5	365	74
Elko PD	26	6	302	42	50	4	294	46
Elko SO	2	2	16	13	7	1	57	15
Esmeralda SO	0	0	0	0	0	0	2	2
Eureka SO	0	0	7	2	0	0	5	0
Fallon PD	17	3	165	42	31	7	183	53
Henderson PD	275	87	2,287	788	269	73	2,066	598
Humboldt SO	3	0	18	4	1	0	12	2
Lander SO	3	1	26	14	8	6	48	24
Lincoln SO	0	2	23	9	4	1	28	5
Lovelock PD	5	3	22	15	6	2	21	17
LV Fire Dept	0	0	0	0	0	0	0	0
LV Metro	1,886	561	14,990	5,078	2,066	627	17,186	5,148
Lyon SO	48	9	319	126	31	10	259	92
Mesquite PD	19	7	127	56	5	1	117	36
Mineral SO	0	0	8	5	1	0	5	2
NLVPD	274	42	2,099	499	323	82	2,339	535
Nye SO	46	7	446	81	52	13	339	112
Pershing SO	6	0	14	2	4	1	12	2
Reno PD	429	138	3,530	1,006	588	115	4,175	1,023
Sparks PD	153	42	1,322	477	206	74	1,366	449
Storey SO	0	0	17	0	7	0	33	0
Taxicab Authority	58	28	265	107	23	0	298	104
TMCC PD	0	0	16	0	0	0	6	0
UNLV PD	11	0	117	8	4	1	94	6
UNR PD	24	1	94	8	0	0	0	0
Washoe SO	53	7	410	94	83	8	604	72
Washoe Co Schl PD	7	0	99	39	6	1	87	29
Wendover PD	5	0	44	5	11	1	61	9
White Pine SO	9	1	55	6	9	1	45	13
Winnemucca PD	7	2	63	20	7	1	66	30
Yerington PD	0	0	4	0	2	0	11	0
TOTALS	3,528	989	28,423	8,894	3,948	1,061	31,336	8,833

Nevada--MV Theft--Incidence Level Variation--UCR

August 2010

Agency	August 2010 Offenses	August 2010 Cleared	2010 YTD Offenses	2010 YTD Cleared	August 2009 Offenses	August 2009 Cleared	2009 YTD Offenses	2009 YTD Cleared
Boulder	2	0	16	0	0	0	6	0
Carlin PD	0	0	0	0	1	1	8	5
Carson SO	6	2	61	20	7	4	54	21
Churchill SO	2	0	22	2	1	0	12	4
Clark Co Schl PD	1	0	11	2	2	1	29	3
Douglas SO	3	0	24	5	3	1	24	4
Elko PD	3	0	26	2	5	0	32	2
Elko SO	1	1	6	4	4	1	16	6
Esmeralda SO	0	0	0	0	0	0	0	0
Eureka SO	0	0	0	0	1	1	2	1
Fallon PD	1	1	2	1	1	1	6	2
Henderson PD	43	1	326	14	43	2	447	19
Humboldt SO	4	3	6	5	2	0	4	1
Lander SO	2	2	3	3	4	4	12	10
Lincoln SO	1	0	1	0	0	1	7	3
Lovelock PD	1	0	3	1	0	0	1	1
LV Fire Dept	0	0	0	0	0	0	0	0
LV Metro	746	43	4674	320	738	50	6363	356
Lyon SO	8	3	43	12	5	2	42	15
Mesquite PD	1	0	11	0	2	0	13	3
Mineral SO	0	0	0	0	1	1	6	3
NLVPD	70	5	562	33	136	9	867	51
Nye SO	9	2	81	16	9	5	64	11
Pershing SO	0	0	2	1	0	0	1	0
Reno PD	66	7	460	66	55	13	509	55
Sparks PD	23	4	166	26	15	5	173	35
Storey SO	0	0	2	1	0	0	2	1
Taxicab Authority	0	0	0	0	0	0	0	1
TMCC PD	0	0	0	0	0	0	0	0
UNLV PD	1	0	7	0	1	0	15	1
UNR PD	0	0	3	0	0	0	0	0
Washoe SO	48	44	91	55	9	4	95	17
Washoe Co Schl PD	0	0	2	1	0	0	2	1
Wendover PD	1	0	2	0	2	0	5	0
White Pine SO	1	0	6	2	1	0	5	1
Winnemucca PD	0	0	10	1	0	0	13	0
Yerington PD	1	0	1	0	0	0	0	0
TOTALS	1045	118	6630	593	1048	106	8835	633

Nevada--Arson--Incidence Level Variation--UCR

August 2010

Agency	August 2010 Offenses	August 2010 Cleared	2010 YTD Offenses	2010 YTD Cleared	August 2009 Offenses	August 2009 Cleared	2009 YTD Offenses	2009 YTD Cleared
Boulder	0	0	1	1	0	0	2	1
Carlin PD	0	0	1	1	0	0	0	0
Carson SO	1	0	3	0	2	1	10	3
Churchill SO	0	0	0	1	1	1	1	1
Clark Co Schl PD	2	0	29	7	0	0	22	12
Douglas SO	1	0	5	2	0	0	3	1
Elko PD	0	0	4	0	1	0	3	0
Elko SO	0	0	1	0	0	0	1	0
Esmeralda SO	0	0	0	0	0	0	0	0
Eureka SO	0	0	0	0	0	0	0	0
Fallon PD	0	0	2	0	0	0	1	1
Henderson PD	5	0	35	6	2	0	52	7
Humboldt SO	0	0	0	0	0	0	1	0
Lander SO	0	0	0	0	0	0	0	0
Lincoln SO	0	0	0	0	0	0	8	4
Lovelock PD	0	0	0	0	0	0	0	0
LV Fire Dept	8	1	51	6	14	4	49	5
LV Metro	14	0	89	0	17	0	143	0
Lyon SO	0	0	4	4	0	0	2	1
Mesquite PD	0	0	0	0	0	0	0	0
Mineral SO	0	0	0	0	0	0	0	0
NLVPD	1	1	8	2	2	0	16	3
Nye SO	1	0	10	3	1	0	6	3
Pershing SO	0	0	0	0	0	0	0	0
Reno PD	3	0	20	7	2	0	20	1
Sparks PD	0	0	13	11	1	0	21	6
Storey SO	0	0	2	1	0	0	0	0
Taxicab Authority	0	0	0	0	0	0	0	0
TMCC PD	0	0	0	0	0	0	0	0
UNLV PD	0	0	0	0	0	0	1	0
UNR PD	0	0	0	0	0	0	0	0
Washoe SO	0	0	7	3	1	0	2	0
Washoe CO Scl PD	0	0	9	8	0	0	6	0
Wendover PD	1	0	1	0	0	0	3	0
White Pine SO	4	2	4	2	4	2	2	1
Winnemucca PD	0	0	1	1	0	0	1	0
Yerington PD	0	0	0	0	0	0	0	0
TOTALS	41	4	300	66	48	8	376	50

State of Nevada

Hate Crimes Reports for August 2010

#	Agency	Date of Incident	UCR Offense	Location	Bias Motivation	Victim Type and Number	Offender Race and Number
1	LAS VEGAS METRO PD	8/1/2010	AGGRAVATED ASSAULT	PARKING LOT/GARAGE	ANTI-MALE HOMOSEXUAL	INDIVIDUAL SOCIETY/PUBLIC-02	WHITE-10
2	LAS VEGAS METRO PD	8/1/2010	DESTRUCTION/DAMAGE/VANDALISM	HIGHWAY/ROAD/ALLEY/STREET	ANTI-BLACK	SOCIETY/PUBLIC-01	UNKNOWN-00
3	LAS VEGAS METRO PD	8/2/2010	SIMPLE ASSAULT	RESIDENCE/HOME	ANTI-MALE HOMOSEXUAL	INDIVIDUAL SOCIETY/PUBLIC-01	WHITE-01
4	LAS VEGAS METRO PD	8/18/2010	SIMPLE ASSAULT	HOTEL/MOTEL/ETC	ANTI-BLACK	INDIVIDUAL SOCIETY/PUBLIC-01	WHITE-01
5	LAS VEGAS METRO PD	8/19/2010	AGGRAVATED ASSAULT	PARKING LOT/GARAGE	ANTI-BLACK	INDIVIDUAL-01	WHITE-01
6	LAS VEGAS METRO PD	8/31/2010	DESTRUCTION/DAMAGE/VANDALISM	CHURCH/SYNAGOGUE/TEMPLE	ANTI-JEWISH	INDIVIDUAL RELIGIOUS ORGANIZATION	UNKNOWN-00

Stolen/Recovered Property Report

August 2010

Property Type	Boulder PD	Carlin PD	Carson SO	Churchill SO	Clark Co Schl PD	Douglas SO	Elko PD	Elko SO	Esmeralda SO
Currency									
Stolen	\$410	\$0	\$6,371	\$161	\$40	\$13,088	\$880	\$0	\$0
Recovered	\$0	\$0	\$0	\$0	\$0	\$0	\$15	\$0	\$0
% Recovered	0.0%	0.0%	0.0%	0.0%	0.0%	0.0%	1.7%	0.0%	0.0%
Jewelry									
Stolen	\$0	\$50	\$55,814	\$400	\$0	\$39,657	\$250	\$0	\$0
Recovered	\$0	\$50	\$1	\$0	\$0	\$14,226	\$50	\$0	\$0
% Recovered	0.0%	100.0%	0.0%	0.0%	0.0%	35.9%	20.0%	0.0%	0.0%
Clothing									
Stolen	\$0	\$0	\$70	\$0	\$0	\$30	\$1,036	\$0	\$0
Recovered	\$0	\$0	\$50	\$0	\$0	\$0	\$286	\$0	\$0
% Recovered	0.0%	0.0%	71.4%	0.0%	0.0%	0.0%	27.6%	0.0%	0.0%
Motor Vehicle									
Stolen	\$21,000	\$0	\$56,795	\$5,300	\$0	\$26,862	\$25,800	\$0	\$0
Recovered	\$0	\$0	\$42,000	\$2,050	\$0	\$25,000	\$1,000	\$0	\$0
% Recovered	0.0%	0.0%	74.0%	38.7%	0.0%	93.1%	3.9%	0.0%	0.0%
Office Equipment									
Stolen	\$0	\$0	\$5,275	\$5,650	\$11,096	\$0	\$0	\$0	\$0
Recovered	\$0	\$0	\$0	\$0	\$0	\$0	\$0	\$0	\$0
% Recovered	0.0%	0.0%	0.0%	0.0%	0.0%	0.0%	0.0%	0.0%	0.0%
TV, VCR, Camera, Etc.									
Stolen	\$0	\$0	\$12,581	\$1,635	\$1,950	\$3,411	\$3,275	\$150	\$0
Recovered	\$0	\$0	\$52	\$0	\$0	\$0	\$250	\$0	\$0
% Recovered	0.0%	0.0%	0.4%	0.0%	0.0%	0.0%	7.6%	0.0%	0.0%
Firearm									
Stolen	\$0	\$0	\$2,750	\$700	\$0	\$1,300	\$351	\$0	\$0
Recovered	\$0	\$0	\$0	\$0	\$0	\$600	\$1,462	\$0	\$0
% Recovered	0.0%	0.0%	0.0%	0.0%	0.0%	46.2%	416.5%	0.0%	0.0%
Household Goods									
Stolen	\$450	\$0	\$1,450	\$800	\$0	\$11,241	\$335	\$0	\$0
Recovered	\$0	\$0	\$250	\$0	\$0	\$1,431	\$5,900	\$0	\$0
% Recovered	0.0%	0.0%	17.2%	0.0%	0.0%	12.7%	1761.2%	0.0%	0.0%
Consumable Goods									
Stolen	\$0	\$0	\$15	\$0	\$0	\$219	\$96	\$0	\$0
Recovered	\$0	\$0	\$15	\$0	\$0	\$82	\$410	\$0	\$0
% Recovered	0.0%	0.0%	100.0%	0.0%	0.0%	37.4%	427.1%	0.0%	0.0%
Livestock									
Stolen	\$0	\$0	\$0	\$0	\$0	\$0	\$0	\$0	\$0
Recovered	\$0	\$0	\$0	\$0	\$0	\$0	\$0	\$0	\$0
% Recovered	0.0%	0.0%	0.0%	0.0%	0.0%	0.0%	0.0%	0.0%	0.0%
Misc.									
Stolen	\$2,244	\$0	\$16,146	\$39,535	\$7,725	\$18,004	\$5,170	\$0	\$0
Recovered	\$0	\$0	\$1,227	\$9,530	\$60	\$112	\$97	\$0	\$0
% Recovered	0.0%	0.0%	7.6%	24.1%	0.8%	0.6%	1.9%	0.0%	0.0%
TOTALS									
Stolen	\$24,104	\$50	\$157,267	\$54,181	\$20,811	\$113,812	\$37,193	\$150	\$0
Recovered	\$0	\$50	\$43,595	\$11,580	\$60	\$41,451	\$9,470	\$0	\$0
% Recovered	0.0%	100.0%	27.7%	21.4%	0.3%	36.4%	25.5%	0.0%	0.0%

Stolen/Recovered Property Report

August 2010

Property Type	Eureka SO	Fallon PD	Henderson PD	Humboldt SO	Lander SO	Las Vegas Metro	Lincoln SO	Lovelock PD	Lyon SO
Currency									
Stolen	\$0	\$0	\$522,719	\$1,865	\$300	\$720,384	\$0	\$0	\$2,204
Recovered	\$0	\$0	\$0	\$845	\$0	\$7,040	\$0	\$0	\$0
% Recovered	0.0%	0.0%	0.0%	45.3%	0.0%	1.0%	0.0%	0.0%	0.0%
Jewelry									
Stolen	\$0	\$4	\$268,505	\$0	\$400	\$2,543,247	\$0	\$0	\$13,496
Recovered	\$0	\$4	\$666	\$0	\$400	\$26,288	\$0	\$0	\$0
% Recovered	0.0%	100.0%	0.2%	0.0%	100.0%	1.0%	0.0%	0.0%	0.0%
Clothing									
Stolen	\$10	\$49	\$35,546	\$0	\$0	\$395,438	\$0	\$0	\$204
Recovered	\$10	\$49	\$2,905	\$0	\$0	\$19,358	\$0	\$0	\$0
% Recovered	100.0%	100.0%	8.2%	0.0%	0.0%	4.9%	0.0%	0.0%	0.0%
Motor Vehicle									
Stolen	\$0	\$1,000	\$388,989	\$17,100	\$7,500	\$752,895	\$1,500	\$1,500	\$39,149
Recovered	\$0	\$3,000	\$284,250	\$13,600	\$1,500	\$680,581	\$0	\$0	\$29,299
% Recovered	0.0%	300.0%	73.1%	79.5%	20.0%	90.4%	0.0%	0.0%	74.8%
Office Equipment									
Stolen	\$1,150	\$0	\$52,326	\$0	\$0	\$606,742	\$0	\$0	\$0
Recovered	\$1,150	\$0	\$900	\$0	\$0	\$12,084	\$0	\$0	\$0
% Recovered	100.0%	0.0%	1.7%	0.0%	0.0%	2.0%	0.0%	0.0%	0.0%
TV, VCR, Camera, Etc.									
Stolen	\$130	\$3,885	\$80,092	\$0	\$0	\$1,498,467	\$0	\$100	\$204,269
Recovered	\$130	\$0	\$3,748	\$0	\$0	\$34,078	\$0	\$0	\$594
% Recovered	100.0%	0.0%	4.7%	0.0%	0.0%	2.3%	0.0%	0.0%	0.3%
Firearm									
Stolen	\$3,150	\$865	\$10,910	\$0	\$8,444	\$73,793	\$0	\$0	\$5,805
Recovered	\$1,450	\$0	\$1,600	\$0	\$7,104	\$8,900	\$0	\$0	\$0
% Recovered	46.0%	0.0%	14.7%	0.0%	84.1%	12.1%	0.0%	0.0%	0.0%
Household Goods									
Stolen	\$0	\$0	\$34,191	\$0	\$29	\$721,899	\$35	\$0	\$300
Recovered	\$0	\$0	\$4,678	\$0	\$0	\$1,924	\$0	\$0	\$0
% Recovered	0.0%	0.0%	13.7%	0.0%	0.0%	0.3%	0.0%	0.0%	0.0%
Consumable Goods									
Stolen	\$0	\$1,263	\$13,499	\$0	\$0	\$66,709	\$0	\$3	\$1,023
Recovered	\$0	\$0	\$1,205	\$0	\$0	\$12,219	\$0	\$3	\$0
% Recovered	0.0%	0.0%	8.9%	0.0%	0.0%	18.3%	0.0%	100.0%	0.0%
Livestock									
Stolen	\$0	\$0	\$0	\$0	\$0	\$0	\$0	\$0	\$2,500
Recovered	\$0	\$0	\$0	\$0	\$0	\$0	\$0	\$0	\$2,500
% Recovered	0.0%	0.0%	0.0%	0.0%	0.0%	0.0%	0.0%	0.0%	100.0%
Misc.									
Stolen	\$850	\$11,404	\$231,659	\$30	\$6,550	\$1,556,844	\$100	\$502	\$93,701
Recovered	\$550	\$321	\$22,514	\$0	\$6,149	\$37,029	\$0	\$0	\$1,242
% Recovered	64.7%	2.8%	9.7%	0.0%	93.9%	2.4%	0.0%	0.0%	1.3%
TOTALS									
Stolen	\$5,290	\$18,470	\$1,638,436	\$18,995	\$23,223	\$8,936,418	\$1,635	\$2,105	\$362,651
Recovered	\$3,290	\$3,374	\$322,466	\$14,445	\$15,153	\$839,501	\$0	\$3	\$33,635
% Recovered	62.2%	18.3%	19.7%	76.0%	65.2%	9.4%	0.0%	0.1%	9.3%

Stolen/Recovered Property Report

August 2010

Property Type	Mesquite PD	Mineral SO	NLVPD	Nye SO	Pershing SO	Reno PD	Sparks PD	Storey SO	Taxicab	TMCC PD
Currency										
Stolen	\$528	\$0	\$50,835	\$83,102	\$270	\$58,126	\$11,343	\$0	\$2,127	\$0
Recovered	\$0	\$0	\$241	\$75,002	\$33	\$500	\$7	\$0	\$0	\$0
% Recovered	0.0%	0.0%	0.5%	90.3%	12.2%	0.9%	0.1%	0.0%	0.0%	0.0%
Jewelry										
Stolen	\$7,250	\$3,450	\$169,875	\$18,175	\$0	\$71,471	\$16,899	\$0	\$0	\$0
Recovered	\$0	\$0	\$3,164	\$0	\$0	\$962	\$716	\$0	\$0	\$0
% Recovered	0.0%	0.0%	1.9%	0.0%	0.0%	1.3%	4.2%	0.0%	0.0%	0.0%
Clothing										
Stolen	\$2,882	\$0	\$15,192	\$401	\$40	\$18,880	\$1,901	\$0	\$0	\$0
Recovered	\$17	\$0	\$1,052	\$56	\$0	\$3,518	\$809	\$0	\$0	\$0
% Recovered	0.6%	0.0%	6.9%	14.0%	0.0%	18.6%	42.6%	0.0%	0.0%	0.0%
Motor Vehicle										
Stolen	\$0	\$0	\$465,548	\$47,000	\$0	\$390,248	\$145,207	\$0	\$0	\$0
Recovered	\$10,000	\$0	\$410,043	\$30,000	\$0	\$203,278	\$157,265	\$0	\$0	\$0
% Recovered	0.0%	0.0%	88.1%	63.8%	0.0%	52.1%	108.3%	0.0%	0.0%	0.0%
Office Equipment										
Stolen	\$0	\$0	\$1,510	\$21,810	\$0	\$97,155	\$14,371	\$0	\$0	\$0
Recovered	\$0	\$0	\$0	\$700	\$0	\$329	\$1,985	\$0	\$0	\$0
% Recovered	0.0%	0.0%	0.0%	3.2%	0.0%	0.3%	13.8%	0.0%	0.0%	0.0%
TV, VCR, Camera, Etc.										
Stolen	\$100	\$0	\$225,334	\$23,582	\$0	\$56,524	\$26,140	\$0	\$13,210	\$0
Recovered	\$0	\$0	\$3,068	\$499	\$0	\$776	\$12,345	\$0	\$0	\$0
% Recovered	0.0%	0.0%	1.4%	2.1%	0.0%	1.4%	47.2%	0.0%	0.0%	0.0%
Firearm										
Stolen	\$0	\$0	\$6,941	\$10,550	\$0	\$19,031	\$7,385	\$0	\$0	\$0
Recovered	\$0	\$0	\$0	\$0	\$0	\$0	\$2,066	\$0	\$0	\$0
% Recovered	0.0%	0.0%	0.0%	0.0%	0.0%	0.0%	28.0%	0.0%	0.0%	0.0%
Household Goods										
Stolen	\$21	\$0	\$33,544	\$52,821	\$0	\$15,463	(\$4,835)	\$0	\$0	\$0
Recovered	\$18	\$0	\$14	\$2,500	\$0	\$17	\$6,562	\$0	\$0	\$0
% Recovered	85.7%	0.0%	0.0%	4.7%	0.0%	0.1%	-135.7%	0.0%	0.0%	0.0%
Consumable Goods										
Stolen	\$8	\$0	\$205,803	\$912	\$0	\$1,204	\$7,392	\$0	\$0	\$0
Recovered	\$0	\$0	\$312	\$0	\$0	\$375	\$785	\$0	\$0	\$0
% Recovered	0.0%	0.0%	0.2%	0.0%	0.0%	31.1%	10.6%	0.0%	0.0%	0.0%
Livestock										
Stolen	\$0	\$0	\$0	\$1,070	\$0	\$0	\$0	\$0	\$0	\$0
Recovered	\$0	\$0	\$0	\$1,070	\$0	\$0	\$0	\$0	\$0	\$0
% Recovered	0.0%	0.0%	0.0%	100.0%	0.0%	0.0%	0.0%	0.0%	0.0%	0.0%
Misc.										
Stolen	\$9,002	\$0	\$240,291	\$19,983	\$465	\$199,580	\$167,873	\$0	\$200	\$0
Recovered	\$213	\$0	\$3,551	\$2,500	\$0	\$7,915	\$40,411	\$0	\$0	\$0
% Recovered	2.4%	0.0%	1.5%	12.5%	0.0%	4.0%	24.1%	0.0%	0.0%	0.0%
TOTALS										
Stolen	\$19,791	\$3,450	\$1,414,873	\$279,406	\$775	\$927,682	\$393,676	\$0	\$15,537	\$0
Recovered	\$10,248	\$0	\$421,445	\$112,327	\$33	\$217,670	\$222,951	\$0	\$0	\$0
% Recovered	51.8%	0.0%	29.8%	40.2%	4.3%	23.5%	56.6%	0.0%	0.0%	0.0%

Stolen/Recovered Property Report

August 2010

Property Type	UNLV PD	UNR PD	Washoe SO	Washoe Co Schl PD	Wendover PD	White Pine SO	Winnemucca PD	Yerington PD	Total By Property
Currency									
Stolen	\$4,879	\$620	\$2,708	\$0	\$5,201	\$760	\$25	\$0	\$1,488,946
Recovered	\$2	\$0	\$0	\$0	\$0	\$0	\$0	\$0	\$83,685
% Recovered	0.0%	0.0%	0.0%	0.0%	0.0%	0.0%	0.0%	0.0%	5.6%
Jewelry									
Stolen	\$0	\$0	\$23,800	\$0	\$0	\$0	\$0	\$0	\$3,232,743
Recovered	\$0	\$0	\$0	\$0	\$0	\$0	\$0	\$0	\$46,527
% Recovered	0.0%	0.0%	0.0%	0.0%	0.0%	0.0%	0.0%	0.0%	1.4%
Clothing									
Stolen	\$400	\$170	\$295	\$0	\$0	\$0	\$0	\$0	\$472,544
Recovered	\$0	\$0	\$0	\$0	\$0	\$0	\$0	\$0	\$28,110
% Recovered	0.0%	0.0%	0.0%	0.0%	0.0%	0.0%	0.0%	0.0%	5.9%
Motor Vehicle									
Stolen	\$22,000	\$0	\$197,800	\$0	\$60,000	\$350	\$0	\$18,100	\$2,691,643
Recovered	\$0	\$0	\$117,300	\$0	\$0	\$350	\$0	\$18,100	\$2,028,616
% Recovered	0.0%	0.0%	59.3%	0.0%	0.0%	100.0%	0.0%	100.0%	75.4%
Office Equipment									
Stolen	\$0	\$4,632	\$12,178	\$3,629	\$0	\$0	\$0	\$0	\$837,524
Recovered	\$0	\$0	\$0	\$0	\$0	\$0	\$0	\$0	\$17,148
% Recovered	0.0%	0.0%	0.0%	0.0%	0.0%	0.0%	0.0%	0.0%	2.0%
TV, VCR, Camera, Etc.									
Stolen	\$6,530	\$2,100	\$7,250	\$1,120	\$1,000	\$2,200	\$0	\$0	\$2,175,035
Recovered	\$0	\$0	\$0	\$0	\$0	\$0	\$0	\$0	\$55,540
% Recovered	0.0%	0.0%	0.0%	0.0%	0.0%	0.0%	0.0%	0.0%	2.6%
Firearm									
Stolen	\$0	\$0	\$1,840	\$0	\$0	\$869	\$0	\$0	\$154,684
Recovered	\$0	\$0	\$0	\$0	\$0	\$0	\$0	\$0	\$23,182
% Recovered	0.0%	0.0%	0.0%	0.0%	0.0%	0.0%	0.0%	0.0%	15.0%
Household Goods									
Stolen	\$0	\$2,000	\$1,825	\$200	\$0	\$120	\$0	\$0	\$871,889
Recovered	\$0	\$0	\$25	\$0	\$0	\$0	\$0	\$0	\$23,319
% Recovered	0.0%	0.0%	1.4%	0.0%	0.0%	0.0%	0.0%	0.0%	2.7%
Consumable Goods									
Stolen	\$0	\$0	\$22	\$0	\$0	\$25	\$175	\$0	\$298,368
Recovered	\$0	\$0	\$0	\$0	\$0	\$0	\$83	\$0	\$15,489
% Recovered	0.0%	0.0%	0.0%	0.0%	0.0%	0.0%	47.4%	0.0%	5.2%
Livestock									
Stolen	\$0	\$0	\$0	\$0	\$0	\$0	\$0	\$0	\$3,570
Recovered	\$0	\$0	\$0	\$0	\$0	\$0	\$0	\$0	\$3,570
% Recovered	0.0%	0.0%	0.0%	0.0%	0.0%	0.0%	0.0%	0.0%	100.0%
Misc.									
Stolen	\$3,807	\$12,993	\$80,843	\$0	\$2,719	\$2,833	\$6,900	\$0	\$2,737,953
Recovered	\$2,800	\$1,059	\$190	\$0	\$0	\$0	\$0	\$0	\$137,470
% Recovered	73.5%	8.2%	0.2%	0.0%	0.0%	0.0%	0.0%	0.0%	5.0%
TOTALS									
Stolen	\$37,616	\$22,515	\$328,561	\$4,949	\$68,920	\$7,157	\$7,100	\$18,100	\$14,964,899
Recovered	\$2,802	\$1,059	\$117,515	\$0	\$0	\$350	\$83	\$18,100	\$2,462,656
% Recovered	7.4%	4.7%	35.8%	0.0%	0.0%	4.9%	1.2%	100.0%	16.5%

Nevada--Assaults on Officers by Agency--UCR

August 2010

Agency	August 2010 Offenses	August 2010 Cleared	2010 YTD Offenses	2010 YTD Cleared	August 2009 Offenses	August 2009 Cleared	2009 YTD Offenses	2009 YTD Cleared
Boulder	0	0	0	0	0	0	0	0
Carlin PD	0	0	5	4	0	0	1	0
Carson SO	1	1	9	9	1	1	15	15
Churchill SO	0	0	2	2	0	0	2	1
ClrkSchlDst PD	1	1	20	20	2	2	16	16
Douglas SO	1	1	6	6	3	3	6	5
Elko PD	0	0	10	9	2	2	14	13
Elko SO	0	0	0	0	0	0	0	0
Esmeralda SO	0	0	0	0	0	0	0	0
Eureka SO	0	0	0	0	0	0	0	0
Fallon PD	0	0	0	0	0	0	1	0
Henderson PD	2	2	30	29	2	1	20	17
Highway Patrol	5	0	5	0	1	1	8	8
Humboldt SO	0	0	0	0	0	0	0	0
Lander SO	0	0	0	0	0	0	0	0
Lincoln SO	0	0	0	0	0	0	3	3
Lovelock PD	0	0	0	0	0	0	0	0
LV Fire Dept	0	0	0	0	0	0	0	0
LV Metro	10	10	75	74	40	40	218	218
Lyon SO	2	2	6	4	0	0	5	5
Mesquite PD	0	0	0	0	0	0	2	2
Mineral SO	0	0	0	0	0	0	1	1
NV Div Investigations	0	0	0	0	0	0	0	0
NLVPD	9	9	76	75	5	5	60	58
Nye SO	2	2	20	20	0	0	3	0
Pershing SO	0	0	0	0	0	0	0	0
Reno PD	6	6	33	33	4	4	24	24
Sparks PD	2	2	11	3	4	0	13	0
Storey SO	0	0	2	2	0	0	2	1
Taxicab Authority	0	0	2	2	0	0	0	0
TMCC PD	0	0	0	0	0	0	0	0
UNLV PD	0	0	3	3	1	1	2	2
UNR PD	1	1	1	1	0	0	0	0
Washoe SO	0	0	0	0	2	0	13	0
Washoe Co Schl PD	0	0	0	0	0	0	0	0
Wendover PD	0	0	1	1	0	0	0	0
White Pine SO	0	0	0	0	0	0	0	0
Winnemucca PD	0	0	0	0	0	0	3	3
Yerington PD	0	0	0	0	0	0	0	0
TOTALS	42	37	317	297	67	60	432	392

Nevada -- Assaults by Agency/Weapon/Assignment -- UCR

August 2010

Agency	Total Assaults	Number Cleared	Firearm	Knife / Cutting Device	Other Danger. Weapon	Hands, Fists, Feet, Etc.	2-Officer Vehicle	1-Officer Vehicle- Alone	1-Officer Vehicle- Assisted	Det./Spec. Assign. - Alone	Det./Spec. Assign. - Assisted	Other- Alone	Other- Assisted
Boulder City PD	0	0	0	0	0	0	0	0	0	0	0	0	0
Carlin PD	0	0	0	0	0	0	0	0	0	0	0	0	0
Carson City SO	1	1	0	0	1	0	1	0	0	0	0	0	0
Churchill Co SO	0	0	0	0	0	0	0	0	0	0	0	0	0
Clark School Dist PD	1	1	0	0	0	1	0	1	0	0	0	0	0
Douglas Co SO	1	1	0	0	1	0	0	1	0	0	0	0	0
Elko PD	0	0	0	0	0	0	0	0	0	0	0	0	0
Elko Co SO	0	0	0	0	0	0	0	0	0	0	0	0	0
Esmeralda Co SO	0	0	0	0	0	0	0	0	0	0	0	0	0
Eureka Co SO	0	0	0	0	0	0	0	0	0	0	0	0	0
Fallon PD	0	0	0	0	0	0	0	0	0	0	0	0	0
Henderson PD	2	2	0	0	0	2	0	2	0	0	0	0	0
NV Highway Patrol	5	0	0	0	0	5	0	1	4	0	0	0	0
Humboldt Co SO	0	0	0	0	0	0	0	0	0	0	0	0	0
Lander Co SO	0	0	0	0	0	0	0	0	0	0	0	0	0
Lincoln Co SO	0	0	0	0	0	0	0	0	0	0	0	0	0
Lovelock PD	0	0	0	0	0	0	0	0	0	0	0	0	0
Las Vegas Fire Dept	0	0	0	0	0	0	0	0	0	0	0	0	0
Las Vegas Metro PD	10	10	3	0	5	2	2	1	7	0	0	0	0
Lyon Co SO	2	2	0	0	0	2	0	1	1	0	0	0	0
Mesquite PD	0	0	0	0	0	0	0	0	0	0	0	0	0
Mineral Co SO	0	0	0	0	0	0	0	0	0	0	0	0	0
NV Div of Investigations	0	0	0	0	0	0	0	0	0	0	0	0	0
North Las Vegas PD	9	9	0	0	0	9	2	1	3	0	0	0	3
Nye Co SO	2	2	0	0	0	2	0	1	1	0	0	0	0
Pershing Co SO	0	0	0	0	0	0	0	0	0	0	0	0	0
Reno PD	6	6	3	0	0	3	6	0	0	0	0	0	0
Sparks PD	2	2	0	0	0	2	0	0	2	0	0	0	0
Storey Co SO	0	0	0	0	0	0	0	0	0	0	0	0	0
Taxi Authority	0	0	0	0	0	0	0	0	0	0	0	0	0
TMCC PD	0	0	0	0	0	0	0	0	0	0	0	0	0
UNLV PD	0	0	0	0	0	0	0	0	0	0	0	0	0
UNR PD	1	1	1	0	0	0	0	0	1	0	0	0	0
Washoe Co SO	0	0	0	0	0	0	0	0	0	0	0	0	0
Washoe Co School PD	0	0	0	0	0	0	0	0	0	0	0	0	0
West Wendover PD	0	0	0	0	0	0	0	0	0	0	0	0	0
White Pine Co SO	0	0	0	0	0	0	0	0	0	0	0	0	0
Winnemucca PD	0	0	0	0	0	0	0	0	0	0	0	0	0
Yerington PD	0	0	0	0	0	0	0	0	0	0	0	0	0
TOTALS	42	37	7	0	7	28	11	9	19	0	0	0	3

Nevada -- Officer Assaults by Activity/Weapon/Assignment -- UCR

August 2010

ACTIVITY TYPE	Total Assaults	Number Cleared	Firearm	Knife / Cutting Device	Other Danger. Weapon	Hands, Fists, Feet, Etc.	2-Officer Vehicle	1-Officer Vehicle- Alone	1-Officer Vehicle- Assisted	Det./Spec. Assign.-Alone	Det./Spec. Assign.- Assisted	Other- Alone	Other- Assisted
DOMESTIC / OTHER DISTURBANCE	11	11	4	0	0	7	6	1	4	0	0	0	0
BURGLARY IN PROGRESS	0	0	0	0	0	0	0	0	0	0	0	0	0
ROBBERY IN PROGRESS	3	3	3	0	0	0	0	0	3	0	0	0	0
ATTEMPTING OTHER ARREST	7	7	0	0	1	6	1	1	2	0	0	0	3
CIVIL DISORDER	0	0	0	0	0	0	0	0	0	0	0	0	0
HANDLING PRISONER	5	5	0	0	0	5	1	1	3	0	0	0	0
INVEST. SUSP. PERSONS / CIRCUM.	6	1	0	0	0	6	0	2	4	0	0	0	0
AMBUSH-NO WARNING	0	0	0	0	0	0	0	0	0	0	0	0	0
MENTALLY DERANGED	0	0	0	0	0	0	0	0	0	0	0	0	0
TRAFFIC PURSUITS / STOPS	5	5	0	0	4	1	2	2	1	0	0	0	0
ALL OTHER	5	5	0	0	2	3	1	2	2	0	0	0	0
TOTALS	42	37	7	0	7	28	11	9	19	0	0	0	3

Nevada--Assaults with Injury/without Injury--UCR

August 2010

Agency	Total Assaults by weapon	Firearm		Knife or Other Cutting Instruments		Other Dangerous weapons		Hands, Fists, Feet, Etc.	
		With personal injury	Without personal injury	With personal injury	Without personal injury	With personal injury	Without personal injury	With personal injury	Without personal injury
Boulder City PD	0	0	0	0	0	0	0	0	0
Carlin PD	0	0	0	0	0	0	0	0	0
Carson City SO	1	0	1	0	0	0	1	0	0
Churchill Co SO	0	0	0	0	0	0	0	0	0
Clark Co Schl Dist PD	1	1	0	0	0	0	0	1	0
Douglas Co SO	1	1	0	0	0	1	0	0	0
Elko Co SO	0	0	0	0	0	0	0	0	0
Elko PD	0	0	0	0	0	0	0	0	0
Esmeralda Co SO	0	0	0	0	0	0	0	0	0
Eureka Co SO	0	0	0	0	0	0	0	0	0
Fallon PD	0	0	0	0	0	0	0	0	0
Henderson PD	2	0	2	0	0	0	0	0	2
NV Highway Patrol	5	4	1	0	0	0	0	4	1
Humboldt Co SO	0	0	0	0	0	0	0	0	0
Lander Co SO	0	0	0	0	0	0	0	0	0
Las Vegas Metro PD	10	1	9	0	3	1	4	0	2
Lincoln Co SO	0	0	0	0	0	0	0	0	0
Lovelock PD	0	0	0	0	0	0	0	0	0
Lyon Co SO	2	1	1	0	0	0	0	1	1
Mesquite PD	0	0	0	0	0	0	0	0	0
Mineral Co SO	0	0	0	0	0	0	0	0	0
NV Div Investigations	0	0	0	0	0	0	0	0	0
North Las Vegas PD	9	0	9	0	0	0	0	0	9
Nye Co SO	2	1	1	0	0	0	0	1	1
Pershing Co SO	0	0	0	0	0	0	0	0	0
Reno PD	6	0	6	0	3	0	0	0	3
Sparks PD	2	0	2	0	0	0	0	0	2
Storey Co SO	0	0	0	0	0	0	0	0	0
Taxicab Authority	0	0	0	0	0	0	0	0	0
TMCC PD	0	0	0	0	0	0	0	0	0
UNLV PD	0	0	0	0	0	0	0	0	0
UNR PD	1	0	1	0	1	0	0	0	0
Washoe Co SO	0	0	0	0	0	0	0	0	0
Washoe Co School Dist.	0	0	0	0	0	0	0	0	0
West Wendover PD	0	0	0	0	0	0	0	0	0
White Pine Co SO	0	0	0	0	0	0	0	0	0
Winnemucca PD	0	0	0	0	0	0	0	0	0
Yerington PD	0	0	0	0	0	0	0	0	0
Totals	42	9	33	0	7	2	5	7	21

Nevada--Time of Assaults on Officers--UCR

August 2010

Agency	12:01-2:00 AM	2:00-4:00 AM	4:00-6:00 AM	6:00-8:00 AM	8:00-10:00 AM	10:00-12:00 AM	12:01-2:00 PM	2:00-4:00 PM	4:00-6:00 PM	6:00-8:00 PM	8:00-10:00 PM	10:00-12:00 PM
Boulder City PD	0	0	0	0	0	0	0	0	0	0	0	0
Carlin PD	0	0	0	0	0	0	0	0	0	0	0	0
Carson City SO	0	0	0	0	0	0	0	0	0	0	0	1
Churchill Co SO	0	0	0	0	0	0	0	0	0	0	0	0
Clark Co Schl Dist PD	0	0	0	0	0	0	1	0	0	0	0	0
Douglas Co SO	0	0	0	0	0	1	0	0	0	0	0	0
Elko Co SO	0	0	0	0	0	0	0	0	0	0	0	0
Elko PD	0	0	0	0	0	0	0	0	0	0	0	0
Esmeralda Co SO	0	0	0	0	0	0	0	0	0	0	0	0
Eureka Co SO	0	0	0	0	0	0	0	0	0	0	0	0
Fallon PD	0	0	0	0	0	0	0	0	0	0	0	0
Henderson PD	0	0	0	0	0	1	0	1	0	0	0	0
Highway Patrol	0	0	0	0	0	0	0	0	0	5	0	0
Humboldt Co SO	0	0	0	0	0	0	0	0	0	0	0	0
Lander Co SO	0	0	0	0	0	0	0	0	0	0	0	0
Las Vegas Metro PD	0	0	2	0	0	1	0	2	0	1	0	4
Lincoln Co SO	0	0	0	0	0	0	0	0	0	0	0	0
Lovelock PD	0	0	0	0	0	0	0	0	0	0	0	0
Lyon Co SO	1	0	1	0	0	0	0	0	0	0	0	0
Mesquite PD	0	0	0	0	0	0	0	0	0	0	0	0
Mineral Co SO	0	0	0	0	0	0	0	0	0	0	0	0
NV Div Investigations	0	0	0	0	0	0	0	0	0	0	0	0
North LV PD	1	1	0	1	0	1	0	0	1	0	4	0
Nye Co SO	0	0	0	0	0	1	0	0	0	1	0	0
Pershing Co SO	0	0	0	0	0	0	0	0	0	0	0	0
Reno PD	2	0	1	0	0	0	3	0	0	0	0	0
Sparks PD	0	0	0	0	0	0	0	0	0	2	0	0
Storey Co SO	0	0	0	0	0	0	0	0	0	0	0	0
Taxicab Authority	0	0	0	0	0	0	0	0	0	0	0	0
TMCC PD	0	0	0	0	0	0	0	0	0	0	0	0
UNLV PD	0	0	0	0	0	0	0	0	0	0	0	0
UNR PD	0	0	0	0	0	0	1	0	0	0	0	0
Washoe Co SO	0	0	0	0	0	0	0	0	0	0	0	0
Washoe Co Schl PD	0	0	0	0	0	0	0	0	0	0	0	0
West Wendover PD	0	0	0	0	0	0	0	0	0	0	0	0
White Pine Co SO	0	0	0	0	0	0	0	0	0	0	0	0
Winnemucca PD	0	0	0	0	0	0	0	0	0	0	0	0
Yerington PD	0	0	0	0	0	0	0	0	0	0	0	0
Totals	4	1	4	1	0	5	5	3	1	9	4	5

Nevada -- Division Of Investigations

Arrests for Narcotics Violations

August 2010

		10- 13-										25-		30-	35-	40-	45-	50-	55-	60-	>64	Total	W	B	A	I		
		<10	12	14	15	16	17	18	19	20	21	22	23	24	29	34	39	44	49	54	59	64						
SALES/MANUFACTURING VIOLATIONS																												
Opium or cocaine and their derivatives (morphine, heroin codeine)	M																						0					
	F	1																					1	1				
Marijuana	M																						3	3				
	F	1																					2	2				
Synthetic narcotics- Manufactured narcotics that can cause true drug addiction (demerol, meth)	M																						0					
	F																						0					
Other dangerous, non-narcotic, drugs (barbituates, benzderine)	M																						4	4				
	F	1																					1	1				
Sub-Total	M	0	0	0	0	0	0	0	0	1	0	0	0	0	1	1	0	2	1	0	0	1	0	7	7	0	0	0
	F	0	0	0	0	1	0	1	0	0	1	0	0	0	0	0	0	1	0	0	0	0	0	4	4	0	0	0
POSSESSION VIOLATIONS																												
Opium or cocaine and their derivatives (morphine, heroin codeine)	M																						0					
	F	1																					2	2				
Marijuana	M	1																					8	8				
	F	1																					3	3				
Synthetic narcotics- Manufactured narcotics that can cause true drug addiction (demerol, meth)	M																						2	2				
	F																						0					
Other dangerous, non-narcotic, drugs (barbituates, benzderine)	M	1																					14	13	1			
	F	1																					4	4				
Sub-Total	M	0	0	0	0	1	0	0	0	1	2	2	0	0	5	4	3	2	4	0	0	0	0	24	23	1	0	0
	F	0	0	0	0	0	0	1	0	1	0	1	0	1	0	0	3	0	2	0	0	0	0	9	9	0	0	0
Total		0	0	0	0	2	0	2	0	3	3	3	0	1	6	5	6	5	7	0	0	1	0	44	43	1	0	0

August 2010

AGE, RACE AND SEX OF PERSONS CHARGED

18 Years of Age and over

CLASSIFICATION OF OFFENSES		SEX	18	19	20	21	22	23	24	25-29	30-34	35-39	40-44	45-49	50-54	55-59	60-64	over 65	Total Over 18	RACE			
																			White	Black	American Indian or Alaskan Native	Asian or Pacific Islander	
Murder and Nonnegligent Manslaughter	01a	Male						1		1	2	1							5				
		Female										1							1	4	1		1
Manslaughter by Negligence	01b	Male										1							1				
		Female					1	1		2	1	5	4	1	3	1			0	1			
Forcible Rape	02	Male																	19				
		Female																	0	12	5		2
Robbery	03	Male	16	14	11	9	9	4	6	26	12	10	5	3	2	1			128				
		Female	2	3	3	2	1	3	1	5	4		3					1	28	83	71		2
Aggravated Assault (Return A-4a-d)	04	Male	14	7	17	19	17	15	9	48	45	34	27	32	25	9	1	8	327				
		Female	2	5	1	7	6	8	4	21	11	10	11	13	7	3	1		110	299	120	7	11
Burglary--Breaking or Entering	05	Male	11	8	5	5	10	6	8	21	20	12	9	13	6	1			135				
		Female	1	5	1	3		2	3	9	10	5	3	2	6	2			52	141	35	5	6
Larceny--Theft (except Motor Vehicle Theft)	06	Male	28	20	18	20	17	13	21	72	46	43	45	45	34	20	10	5	457				
		Female	28	20	22	12	15	10	14	45	35	32	31	23	13	6	5	3	314	553	192	7	19
Motor Vehicle Theft	07	Male	3	3	2	3	3	5	1	11	6	2	1	4	1	1			46				
		Female	1							1		1	1	1					5	38	11		2
Other Assaults (Return A-4e)	08	Male	28	26	37	50	37	49	50	205	156	119	99	92	54	26	10	11	1049				
		Female	15	14	14	22	21	19	19	90	42	54	43	25	20	11	3	3	415	1047	349	17	51
Arson	09	Male				1		1			1		1	3	1				8				
		Female										1							1	8		1	
Forgery & Counterfeiting	10	Male		1	1	1	2	1	1	8	10	6	9	6	1	3			50				
		Female	1	2				1			8	6	8	2	5	1			34	54	21		9
Fraud	11	Male	3	2	2	4	1	1	4	14	21	13	17	11	5	3	1	3	105				
		Female		2	3	5	2	4	2	13	2	6	3	9	4	2		2	59	126	26	3	9
Embezzlement	12	Male		1	2	1	2	1	2	3	2	6	1	1	2				24				
		Female			1	1		2		2	6	4	2			1			19	31	8		4
Stolen Property; Buying, Receiving, Possessing	13	Male	11	7	8	5	2	3	7	16	23	12	10	5	1				110				
		Female	1	1				2	1	1	3	2	2	2					15	81	37	1	6
Vandalism	14	Male	12	10	10	6	4	4	8	16	10	5	5	10	1	1	1	1	104				
		Female	1	4	3					1	2	4	3	2	2				22	88	32	2	4
Weapons; Carrying, Possessing, etc.	15	Male	8	7	5	5	2	3	5	30	23	16	8	10	8	5			135				
		Female	1	1		1		1	1	6	2		2		1				16	112	30	1	8
Prostitution and Commercialized Vice	16	Male	1			2	2	1	3	11	15	6	8	4	6	4	2	4	69				
		Female	15	24	23	18	18	25	10	58	31	25	12	16	5	2	1	1	284	167	166	1	19
Sex Offenses (except Forcible Rape and Prostitution)	17	Male	3	1		3	2	2	3	12	9	14	12	11	8	7	2	3	92				
		Female		1		1	1	1			3	1	2	2	1				13	81	22	1	1
Drug Abuse Violations	18	Male	28	32	31	29	24	22	21	100	63	46	42	28	18	4	2	3	493				
		Female	6	3	5	10	4	5	3	22	17	8	10	9	5	2	3	0	112	424	167	4	10
(1) Sale/Manufacturing Subtotal	180	Male	9	14	10	7	7	14	10	51	29	22	21	16	6	0	1	0	217				
		Female	1	0	2	3	2	1	2	9	8	3	4	2	2	0	0	0	39	163	85	4	4
Opium or Cocaine and Their Derivatives (Morphine, Heroin, Codeine)	a	Male	3	2		2	1	1	5	12	7	10	4		4		1		52				
		Female							1	4	3	1	1	1					11	35	24	3	1
Marijuana	b	Male	6	8	8	3	4	8	3	19	11	7	5	4	1				87				
		Female	1		2	2	2		1		1	1			1				11	50	46		2
Synthetic Narcotics-Manufactured Narcotics Which Can Cause True Drug Addiction (Demerol, Methadon)	c	Male			1	1	1	3		11	10	4	10	5					46				
		Female								3	4	1		1	1				10	46	10		
Other Dangerous Non-Narcotic Drugs (Barbiturates, Benzadrine)	d	Male		4	1	1	1	2	2	9	1	1	2	7	1				32				
		Female				1		1		2			3						7	32	5	1	1

CLASSIFICATION OF OFFENSES		SEX																	Total Over 18	RACE			
			18	19	20	21	22	23	24	25-29	30-34	35-39	40-44	45-49	50-54	55-59	60-64	over 65		White	Black	American Indian or Alaskan Native	Asian or Pacific Islander
		Male	19	18	21	22	17	8	11	49	34	24	21	12	12	4	1	3	276				
(2) Possession - Subtotal	185	Female	5	3	3	7	2	4	1	13	9	5	6	7	3	2	3	0	73	261	82	0	6
Opium or Cocaine and Their Derivatives (Morphine, Heroin, Codeine)	e	Male		2	4	4		2	1	5	4	6	3	2	1	2		1	37				
		Female				1				1	1		1	4					8	30	15		
Marijuana	f	Male	18	15	13	13	14	6	7	27	17	10	5	7	7	2	1	2	164				
		Female	3	2	3	5	1	1		7	3	2	3	1		1			32	145	45		6
Synthetic Narcotics-Manufactured Narcotics Which Can Cause True Drug Addiction (Demerol, Methadon	g	Male		1		3	3		2	10	10	5	10	3	3				50				
		Female	1				1	3	1	3	2	3	2	1	3	1	1		22	60	12		
Other Dangerous Non-Narcotic Drugs (Barbiturates, Benzedrine)	h	Male	1		4	2			1	7	3	3	3		1				25				
		Female	1	1		1				2	3			1			2		11	26	10		
Gambling Total	19	Male	0	0	1	0	0	0	0	0	0	0	0	0	0	0	0	0	1				
Bookmaking		Female	0	1	0	0	0	0	0	0	0	0	0	0	0	0	0	0	1	2	0	0	0
(Horses and Sports Book)	a	Male																	0				
		Female																	0				
Numbers and Lottery	b	Male																	0				
		Female																	0				
All Other Gambling	c	Male			1														1	2			
Offenses Against Family and Children	20	Male	6	9	11	3	5	1	2	7	8	5	4	7	1				69				
		Female	1	2	2		3	3		3	5	5	2	1		1	1		29	91	6		1
Driving Under the Influence	21	Male	8	8	9	15	15	13	10	52	39	30	38	26	30	16	7	13	329				
		Female	3	2	1	3	4	8	3	15	12	6	11	11	4	3	2	2	90	368	30	8	13
Liquor Laws	22	Male	66	37	36	8	4	5		13	10	13	18	26	13	9	10	5	273				
		Female	20	13	6	2				1		1	1	1	1				46	268	37	8	6
Drunkeness	23	Male	1			1			1	2	1	1	2		1	1			11				
		Female			1					1		1							3	11	1	2	
Disorderly Conduct	24	Male		1		6	2	2	1	11	6	3		7	9	2	2		52				
		Female				3	2		1	3	2	1	3	3		1			19	53	9	6	3
Vagrancy	25	Male	1					1		2	1		1	1		1			8				
		Female																	2	7	3		
All Other Offenses (except Traffic) Total	26	Male	36	65	54	47	63	56	52	226	165	120	127	127	87	45	21	10	1301				
		Female	13	10	12	23	15	15	14	78	54	45	44	33	22	10	3	3	394	1421	211	42	21
Suspicion	27	Male											1						1				
		Female																	0	1			
GRAND TOTAL			395	372	358	357	317	318	294	1292	948	742	682	633	405	204	88	81	7486	5572	1590	116	208

AGE, SEX, AND RACE OF PERSONS CHARGED

August 2010

18 Years of age and under

(Count all Offences even if the Arrest is based on only one charge)

CLASSIFICATION OF OFFENSES									RACE				
									White	Black	American Indian or Alaskan Native	Asian or Pacific Islander	
		SEX	Under 10	10-12	13-14	15	16	17	Total Under 18				
Murder and Nonnegligent Manslaughter	01a	Male							0				
		Female							0				
Manslaughter by Negligence	01b	Male						1	1				
		Female							0	1			
Forcible Rape	02	Male			1	1			2				
		Female							0	1	1		
Robbery	03	Male			2	4	10	6	28				
		Female			1			2	3	6	21		
Aggravated Assault (Return A-4a-d)	04	Male		2	4	6	10	6	28				
		Female		1	1	2		4	8	29	7		
Burglary--Breaking or Entering	05	Male		7	7	18	12	9	53				
		Female		3	6	4	2	5	20	55	17	1	
Larceny--Theft (except Motor Vehicle Theft)	06	Male	1	7	18	28	25	35	114				
		Female		7	24	27	30	20	108	155	61	5	1
Motor Vehicle Theft	07	Male				1			1				
		Female				2			2	1	2		
Other Assaults (Return A-4e)	08	Male		10	20	25	23	26	104				
		Female		2	19	13	21	14	69	128	42	2	1
Arson	09	Male		1	2				3				
		Female							0	2	1		
Forgery & Counterfeiting	10	Male							0				
		Female							0				
Fraud	11	Male			1				1				
		Female						2	2	3			
Embezzlement	12	Male							0				
		Female							0				
Stolen Property; Buying, Receiving, Possessing	13	Male		1	3	4	4	5	17				
		Female				1			1	11	7		
Vandalism	14	Male	3	25	10	16	16	14	84				
		Female		4	1	3			8	61	30		1
Weapons; Carrying, Possessing, etc.	15	Male			3	2	3	6	14				
		Female							0	13	1		
Prostitution and Commercialized Vice	16	Male						1	1				
		Female						6	6	3	2	1	1
Sex Offenses (except Forcible Rape and Prostitution)	17	Male	1	3	5	1	2	2	14				
		Female				1		1	2	13	2		1
Drug Abuse Violations		Male	0	0	16	23	28	31	98				
Grand Total	18	Female	0	1	2	4	3	7	17	83	27	1	4
(1) Sale/Manufacturing Subtotal	180	Male	0	0	1	1	9	2	13				
		Female	0	0	0	0	1	3	4	12	5	0	0
Opium or Cocaine and Their Derivatives (Morphine, Heroin, Codeine)	a	Male				1			1				
		Female							0		1		
Marijuana	b	Male					6	1	7				
		Female					1	2	3	7	3		
Synthetic Narcotics-Manufactured Narcotics Which Cause True Drug Addiction (Dem	c	Male					1	1	2				
		Female							0	1	1		
Other Dangerous Non-Narcotic Drugs (Barbiturates, Benzedrine)	d	Male			1		2		3				
		Female						1	1	4			
(2) Possession - Subtotal	185	Male	0	0	15	22	19	29	85				
		Female	0	1	2	4	2	4	13	71	22	1	4
Opium or Cocaine and Their Derivatives (Morphine, Heroin, Codeine)	e	Male				3	1	3	7				
		Female				1			1	6	2		
Marijuana	f	Male			8	15	15	26	64				
		Female			2	3	1	4	10	52	17	1	4
Synthetic Narcotics-Manufactured Narcotics Which Cause True Drug Addiction (Dem	g	Male			1	1	1		3				
		Female							0	3			
Other Dangerous Non-Narcotic Drugs (Barbiturates, Benzedrine)	h	Male			6	3	2		11				
		Female		1			1		2	10	3		

CLASSIFICATION OF OFFENSES		SEX	Under 10	10-12	13-14	15	16	17	Total Under 18	RACE			
										White	Black	American Indian or Alaskan Native	Asian or Pacific Islander
		Male	0	0	0	0	0	0	0				
Gambling Total	19	Female	0	0	0	0	0	0	0	0	0	0	0
Bookmaking		Male							0				
(Horses and Sports Book)	a	Female							0				
Numbers and Lottery		Male							0				
	b	Female							0				
All Other Gambling		Male							0				
	c	Female							0				
Offenses Against Family and Children	20	Male						1	1				
		Female				1	1	1	3	4			
Driving Under the Influence	21	Male			1	1	2	5	9				
		Female					1		1	10			
Liquor Laws	22	Male			14	21	36	66	137				
		Female			8	9	17	24	58	179	13	1	2
Drunkeness	23	Male							0				
		Female							0				
Disorderly Conduct	24	Male			4	1	4	2	11				
		Female			2		1	1	4	13	2		
Vagrancy	25	Male						1	1				
		Female						1	1	1	1		
All Other Offenses (except Traffic) Total	26	Male	4	10	33	35	58	54	194				
		Female		2	12	20	20	13	67	179	74	4	4
Suspicion	27	Male							0				
		Female							0				
Curfew and Loitering Law Violatic	28	Male		3	25	22	64	69	183				
		Female		1	19	26	27	21	94	200	73		4
Runaway	29	Male		1	9	1	11	3	25				
		Female		1	3	5	8	7	24	38	8	1	2
GRAND TOTAL			9	93	276	328	441	471	1618	1189	392	16	21



Nevada UCR *Footnotes / Exceptions

August 2010

Table 1

--Nevada figures are annualized projections.

--"Assault" does not include simple assaults to allow direct comparison between the Nevada rate and the National rate for this Index offense. See Table 8 for a count of all assaults.

Table 2

--The LV Fire Department reports "Arson" offenses for the City of Las Vegas. The population figure for this agency represents jurisdiction and is not added to the county total. Similarly, the School District Police Departments in Clark and Washoe Counties are not added to county population estimates as they represent persons served (student enrollment plus staff.)

--Assault data in this table includes ALL assaults (aggravated and simple) reported for the current month.

--County crime rates are calculated following subtraction of populations of jurisdictions failing to report.

Table 3

-- In the "Nevada vs National Index Crime and Clearance Rates" sections, the "Assaults" numbers do not include simple assaults following FBI guidelines. Therefore, they may be compared directly to National rates.

-- National crime rate figures are the latest available for comparative use (2005). Nevada figures are annualized projections.

Table 13

--At various times, property values recovered will exceed values stolen for the current reporting period.

General Notes:

The following agencies were unable to submit reports for this month:

-- Any late reports not submitted in time for this publication will be incorporated in to the year-to-date totals in subsequent reports.